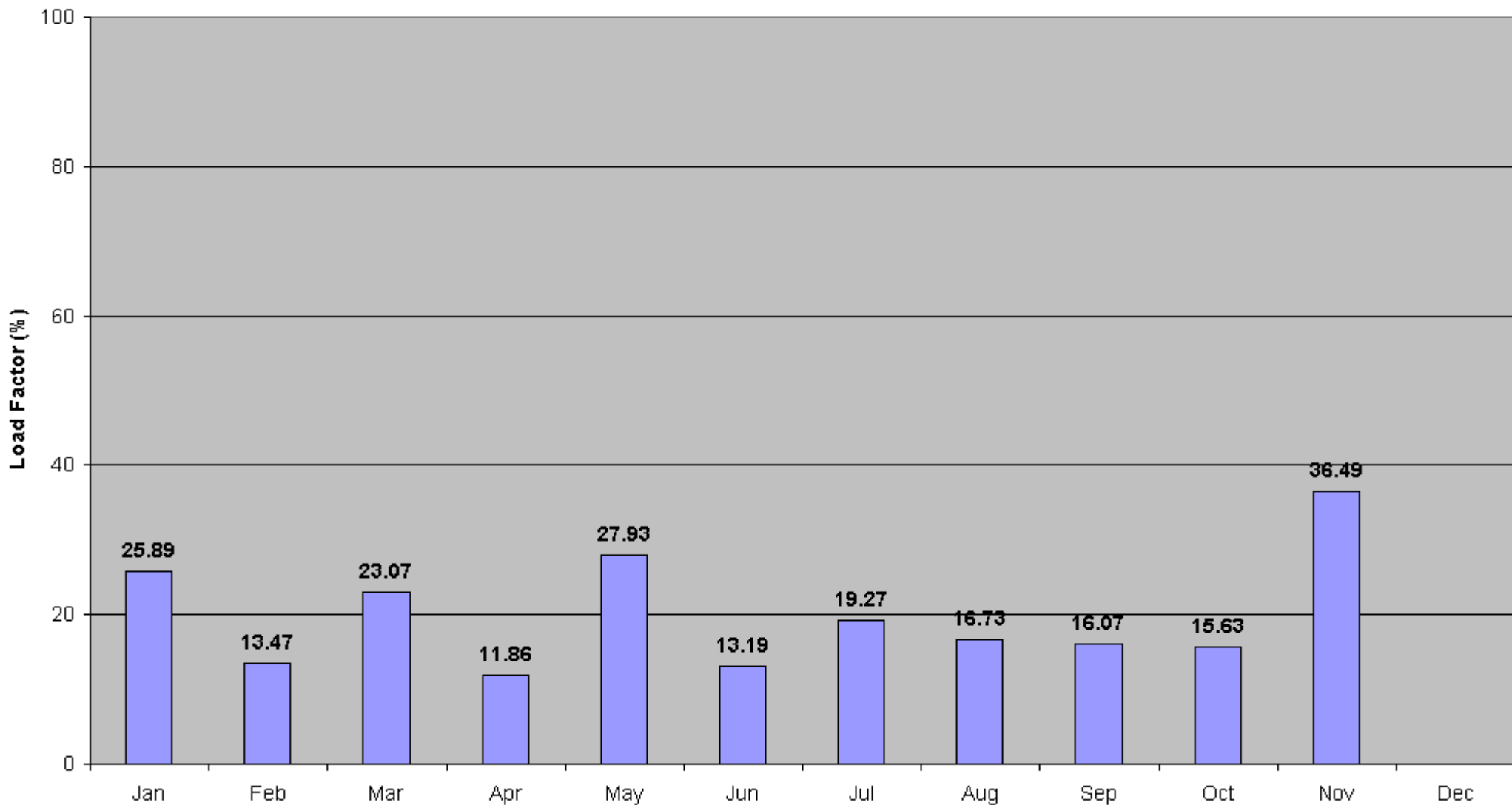


UK Averages from 64 Met Office eather Stations at 1900hours - 2009

Average Monthly Load Factor = 19.9%

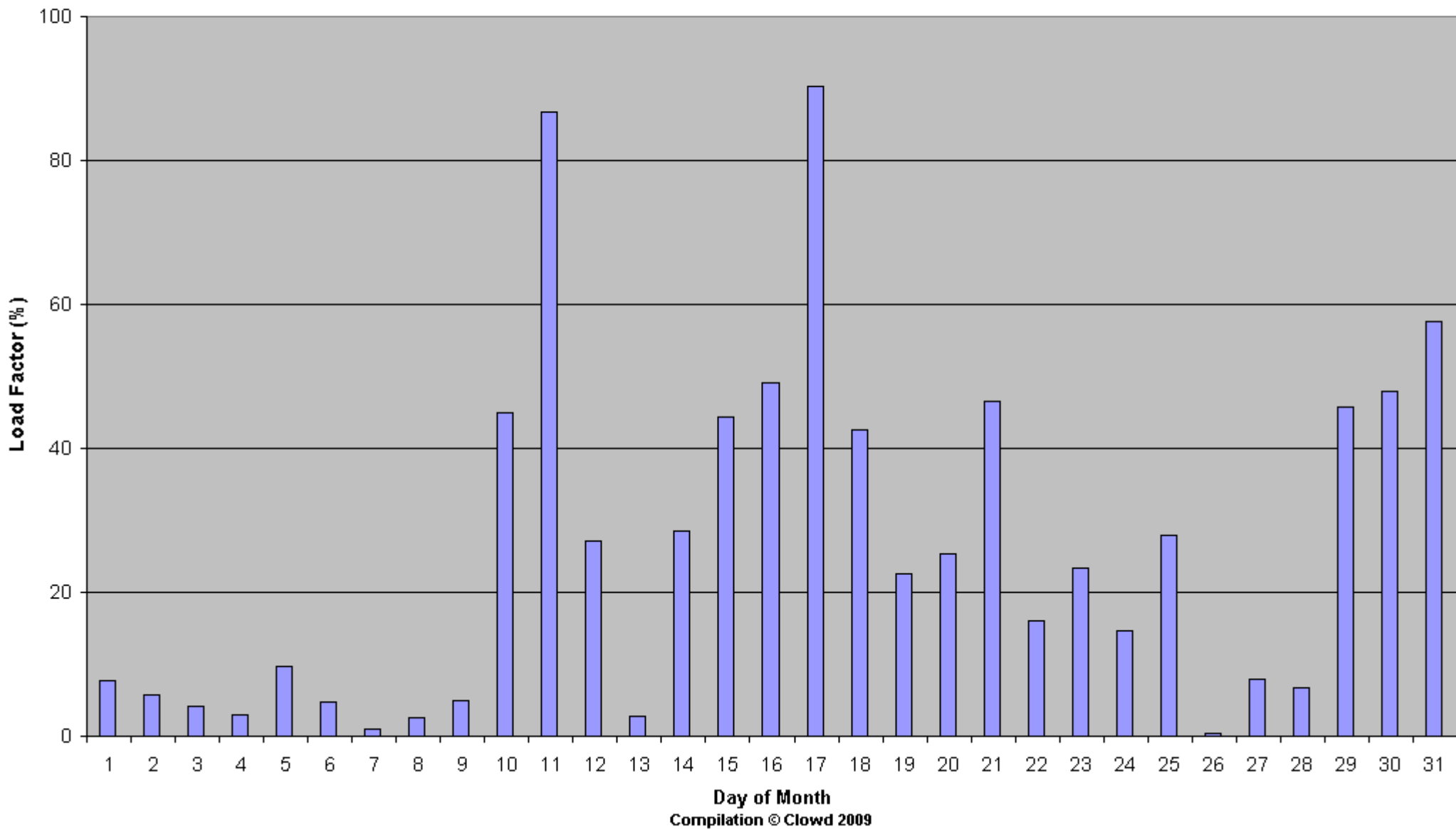
Average Number of Turbines not Working = 30.7%



UK Average from 64 Met Office Weather Stations at 19:00hours - January 2009

Average Monthly Load Factor = 25.9%

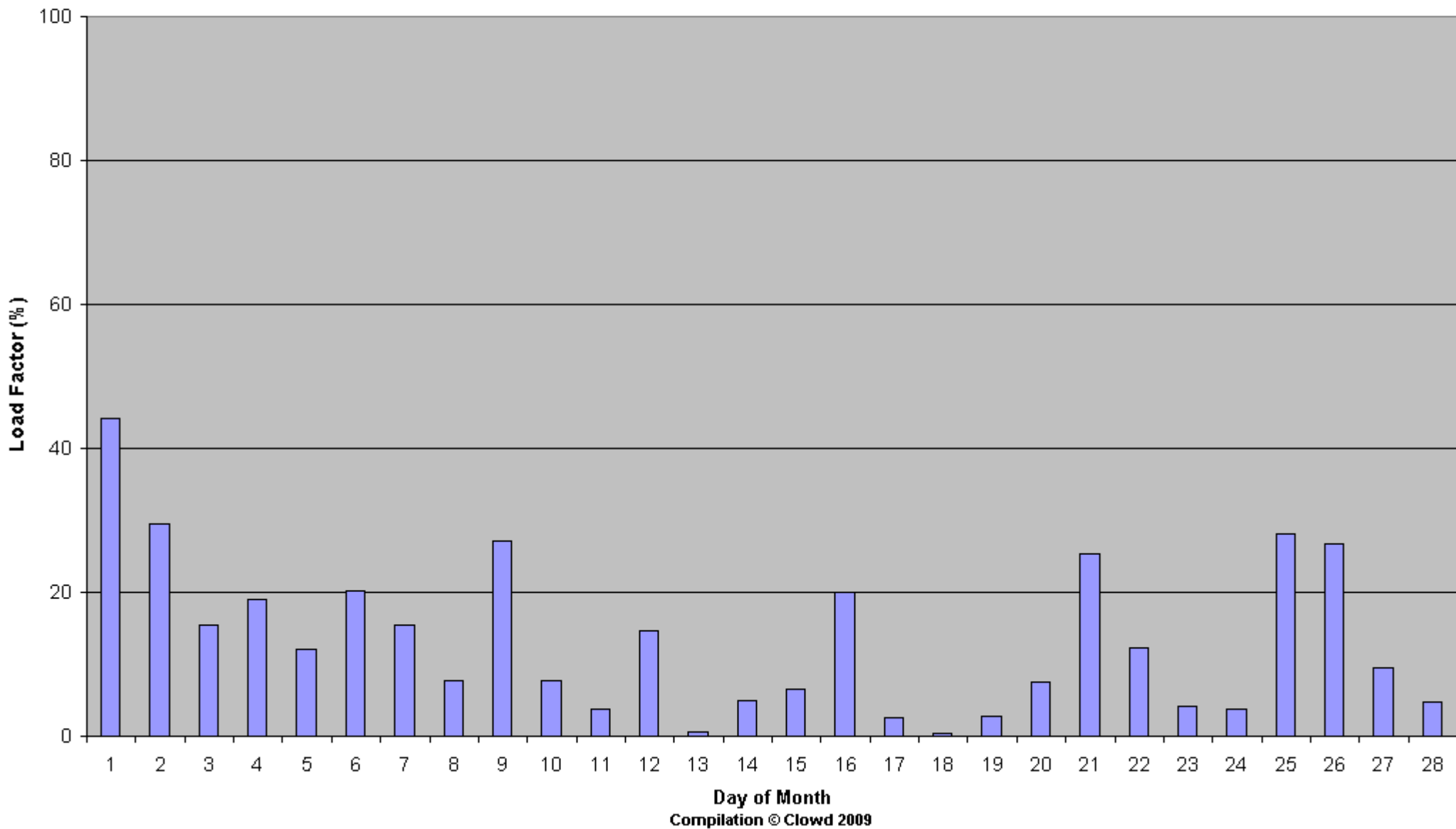
Average Number of Turbines not Working = 31.1%



UK Average from 64 Met Office Weather Stations at 19:00hours - February 2009

Average Monthly Load Factor = 13.5%

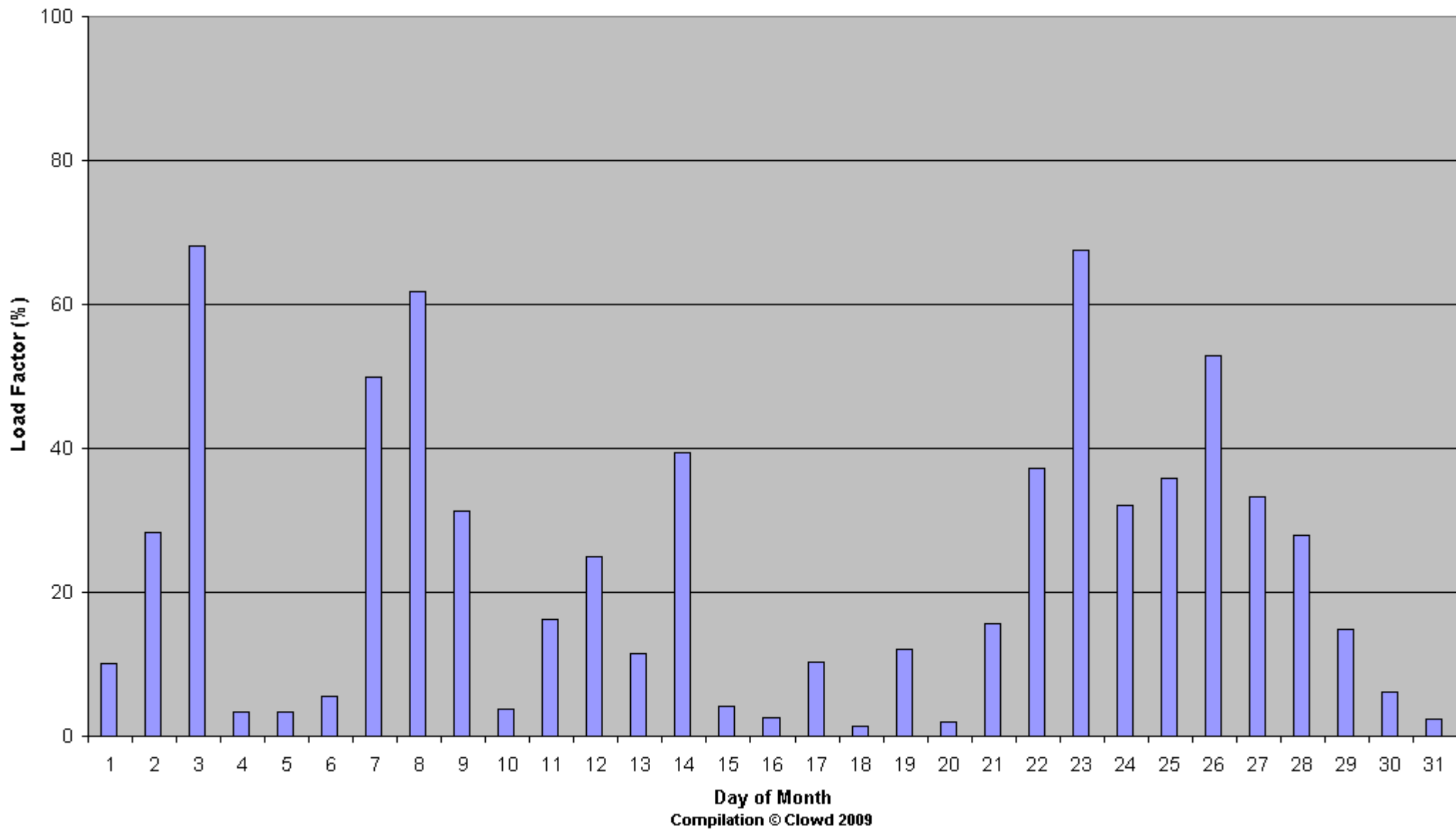
Average Number of Turbines not Working = 40.4%



UK Average from 64 Met Office Weather Stations at 19:00hours - March 2009

Average Monthly Load Factor = 23.1%

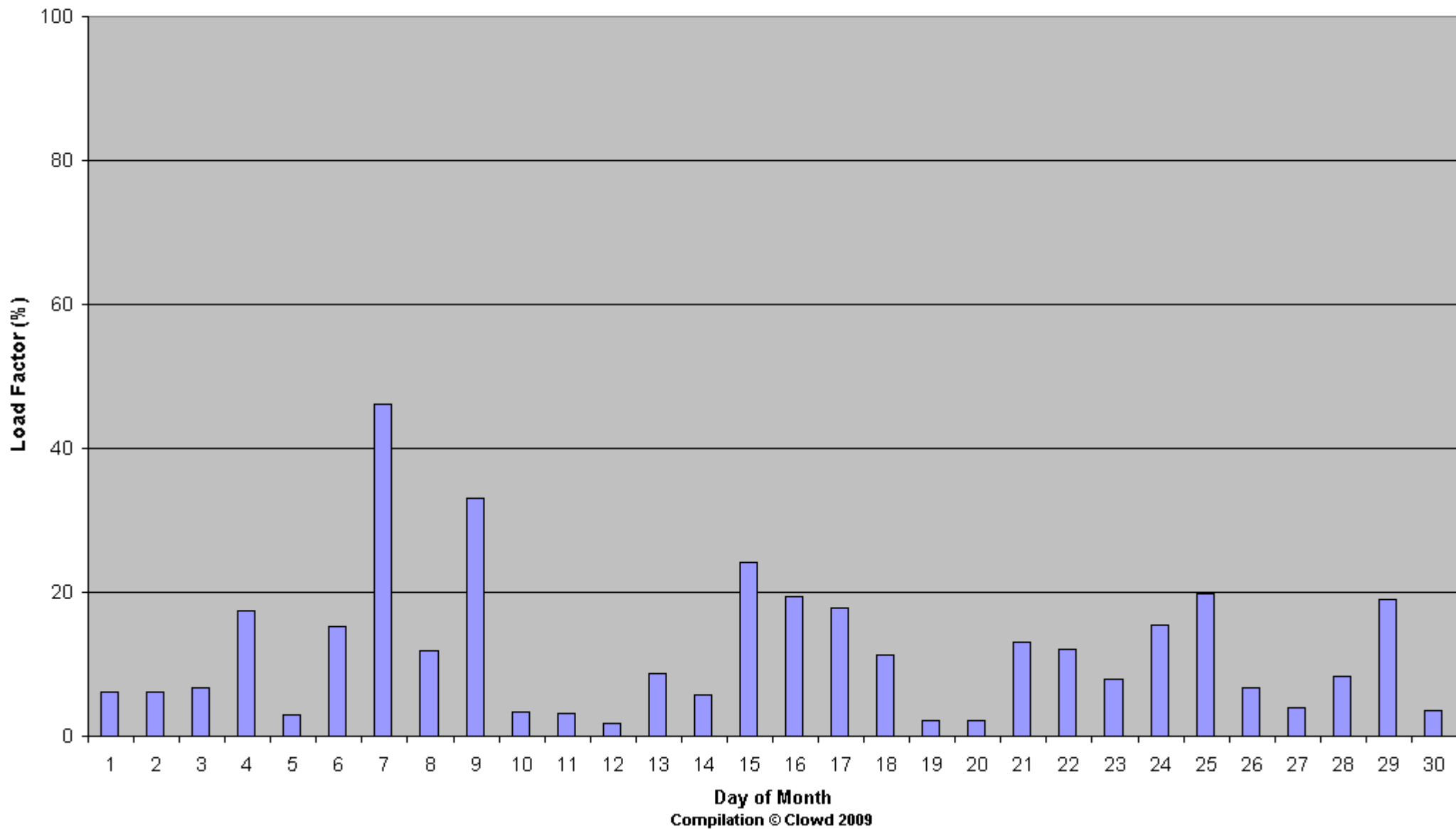
Average Number of Turbines not Working = 30.5%



UK Average from 64 Met Office Weather Stations at 19:00hours - April 2009

Average Monthly Load Factor = 11.9%

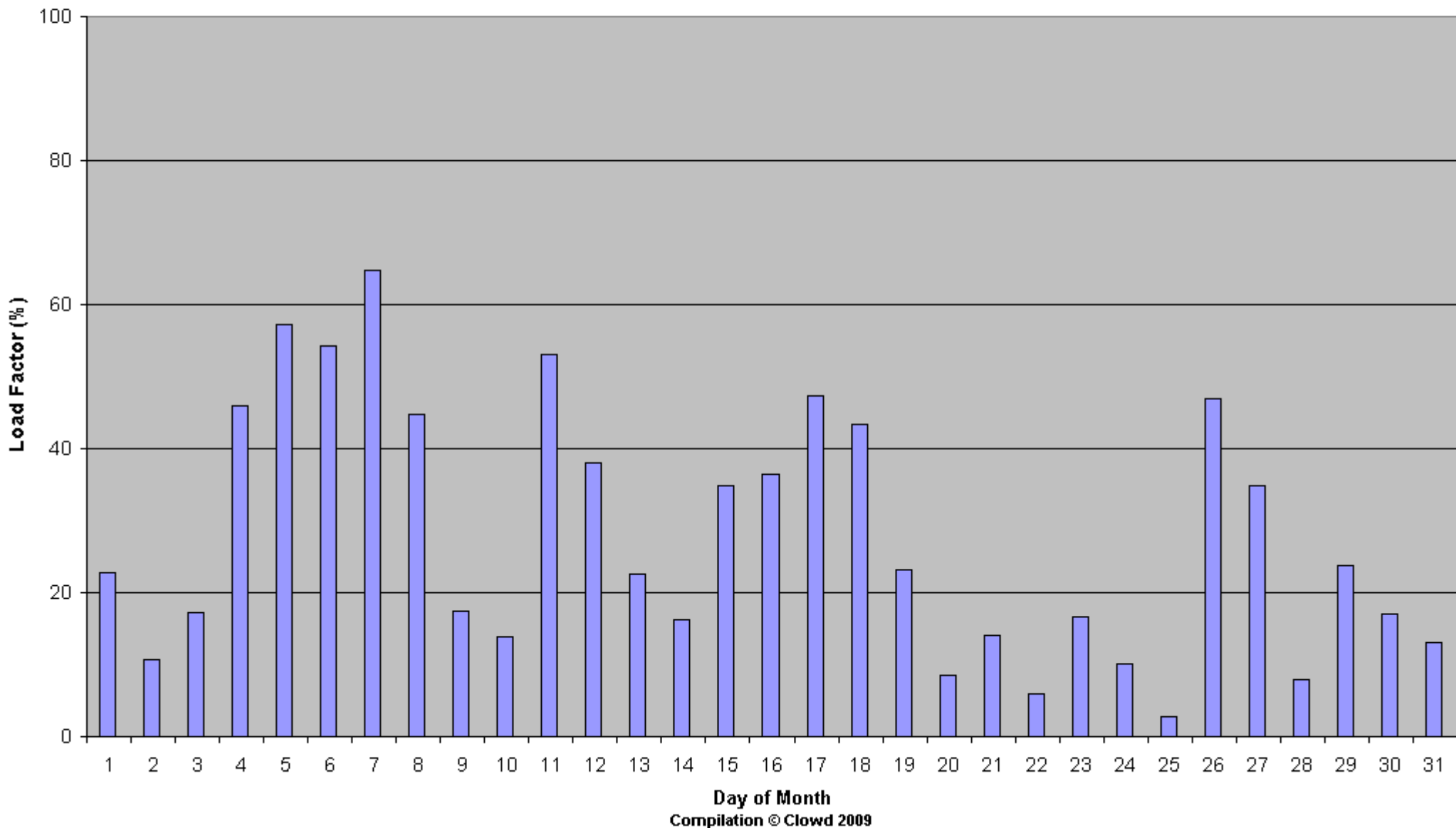
Average Number of Turbines not Working = 35.6%



UK Average from 64 Met Office Weather Stations at 19:00hours - May 2009

Average Monthly Load Factor = 27.9%

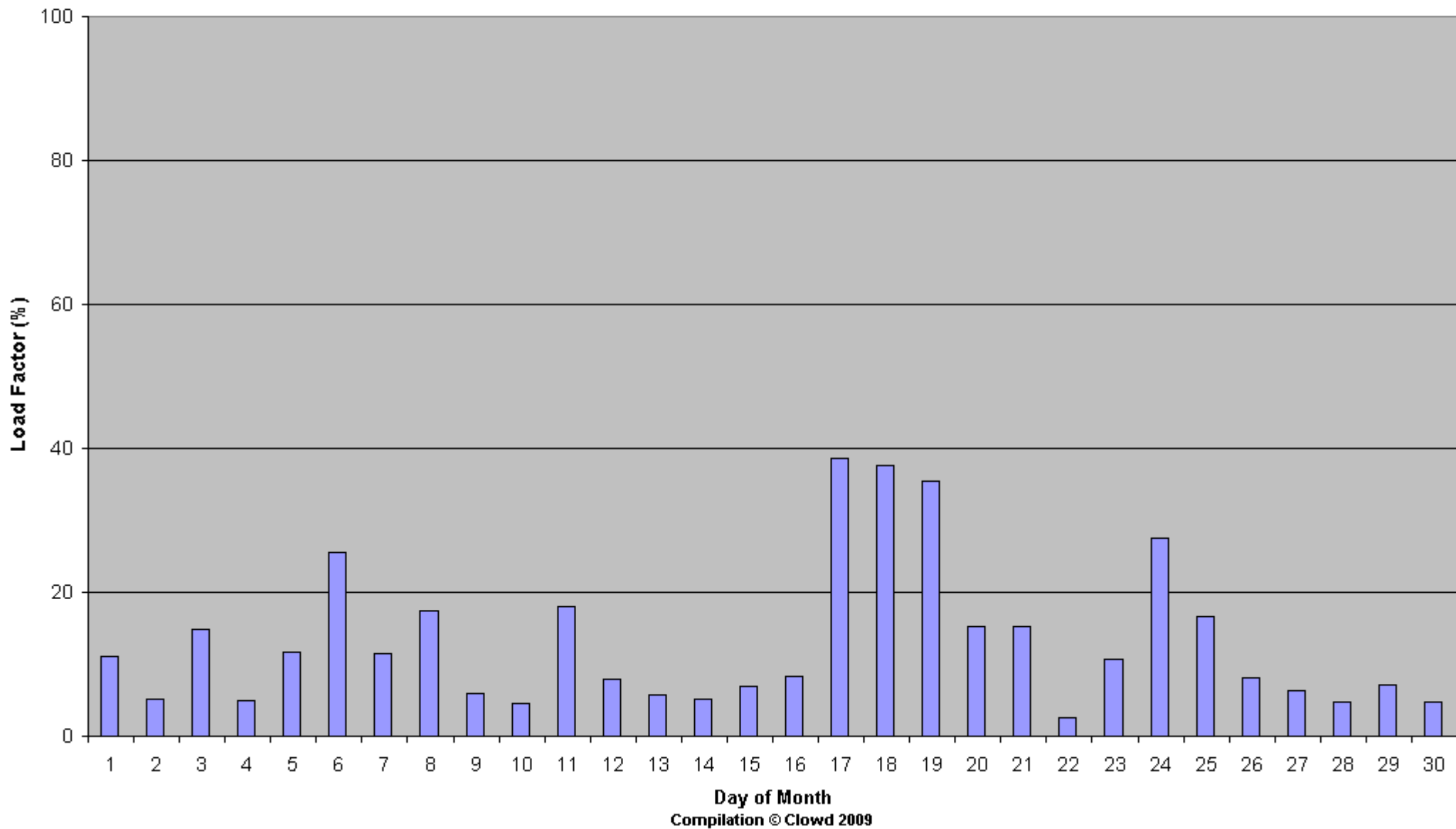
Average Number of Turbines not Working = 16.9%



UK Average from 64 Met Office Weather Stations at 19:00hours - June 2009

Average Monthly Load Factor = 13.2%

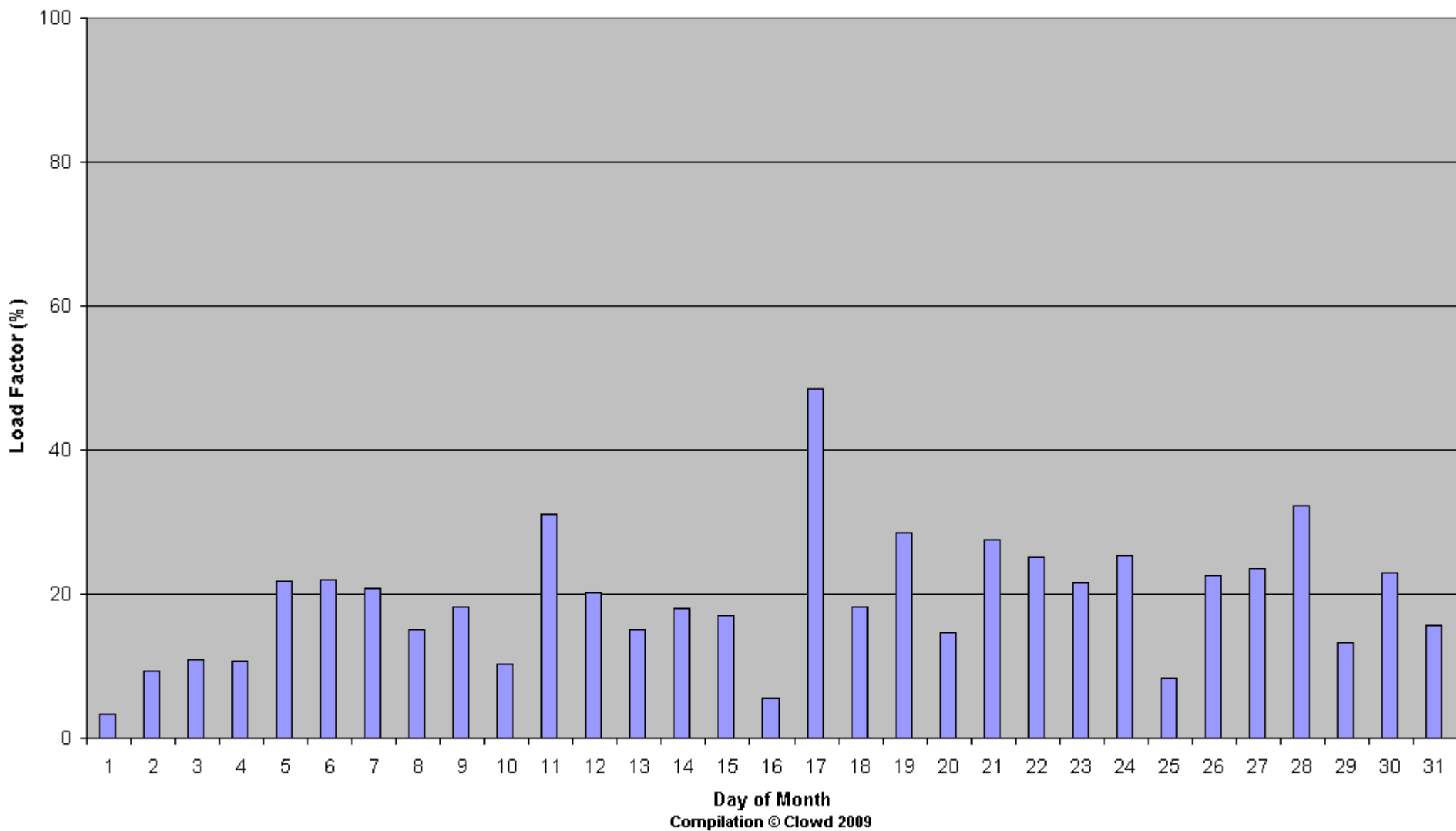
Average Number of Turbines not Working = 31.0%



UK Average from 64 Met Office Weather Stations at 19:00hours - July 2009

Average Monthly Load Factor = 19.3%

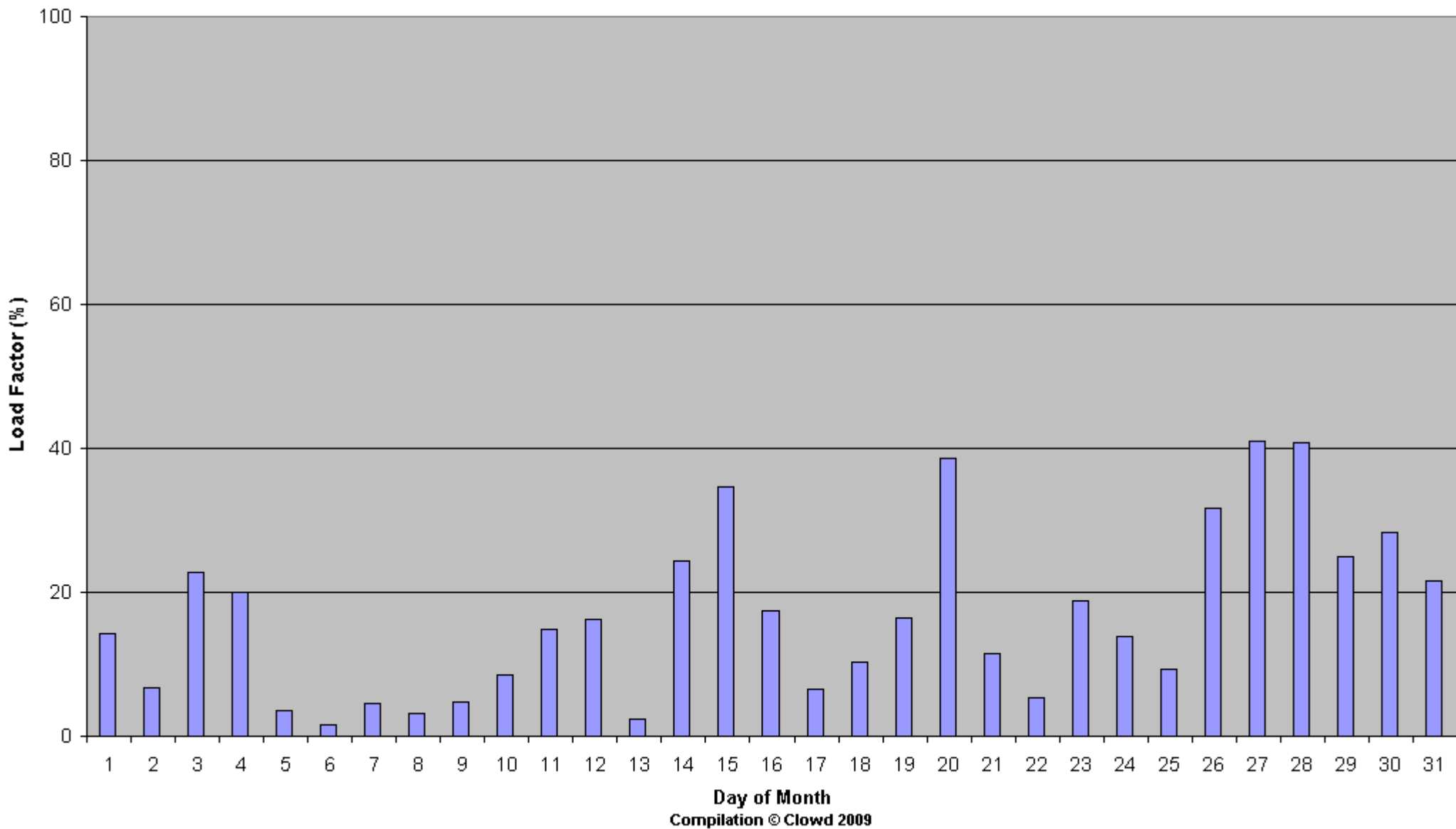
Average Number of Turbines not Working = 23.1%



UK Average from 64 Met Office Weather Stations at 19:00hours - August 2009

Average Monthly Load Factor = 16.7%

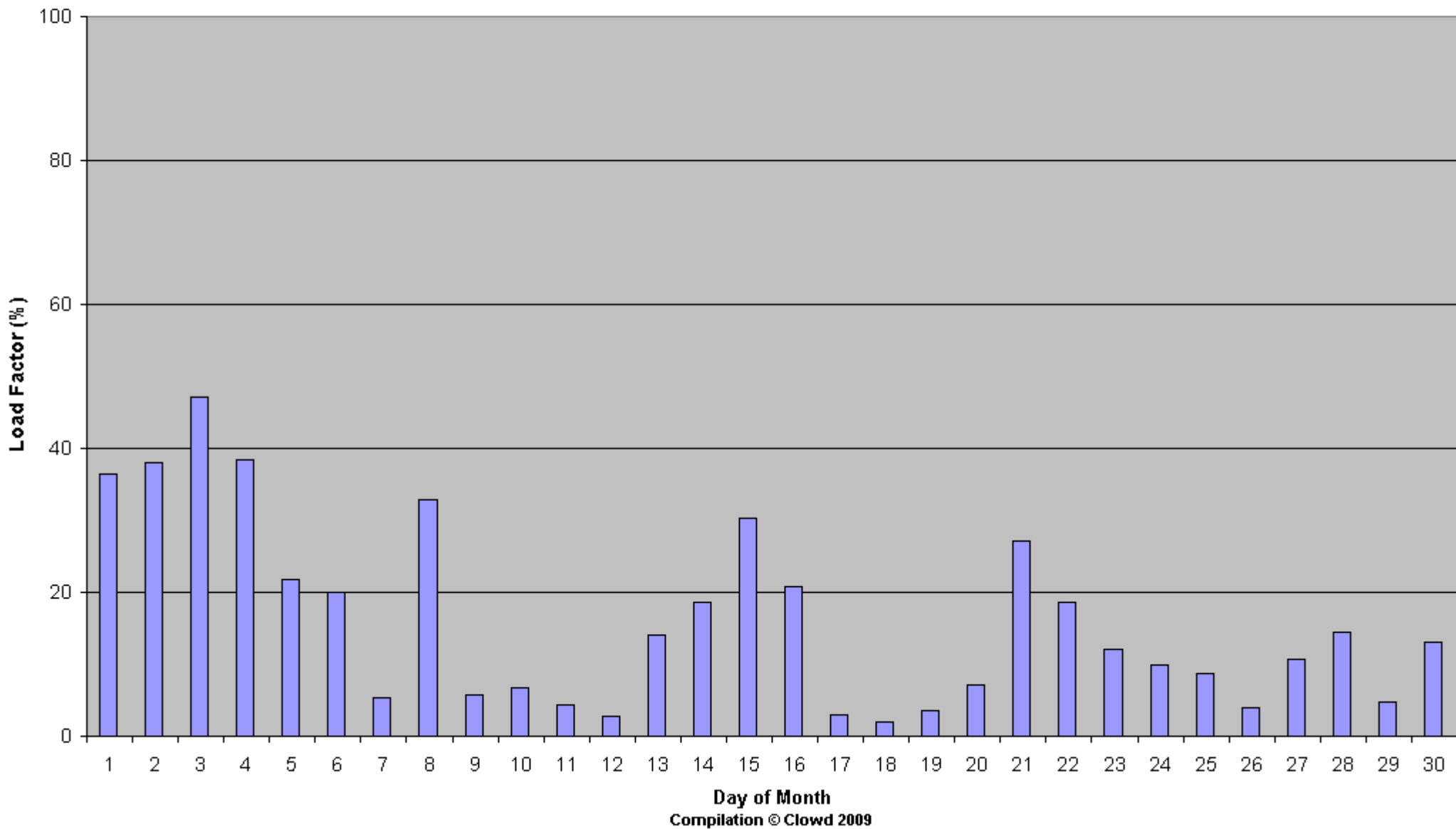
Average Number of Turbines not Working = 25.5%



UK Average from 64 Met Office Weather Stations at 19:00hours - September 2009

Average Monthly Load Factor = 16.1%

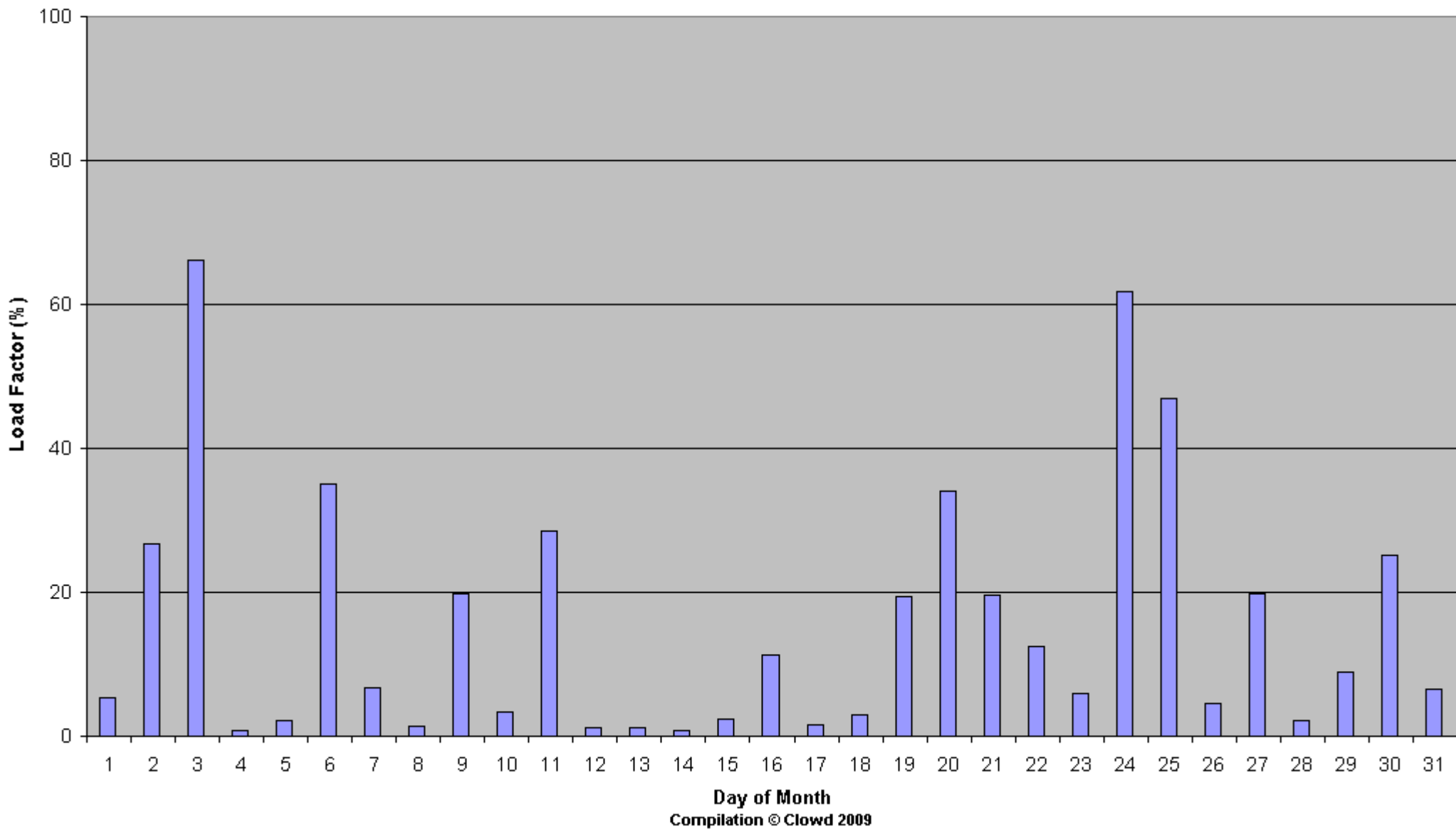
Average Number of Turbines not Working = 37.2%



UK Average from 64 Met Office Weather Stations at 19:00hours - October 2009

Average Monthly Load Factor = 15.6%

Average Number of Turbines not Working = 45.4%



UK Average from 64 Met Office Weather Stations at 19:00hours - November 2009

Average Monthly Load Factor = 36.5%

Average Number of Turbines not Working = 21.2%

