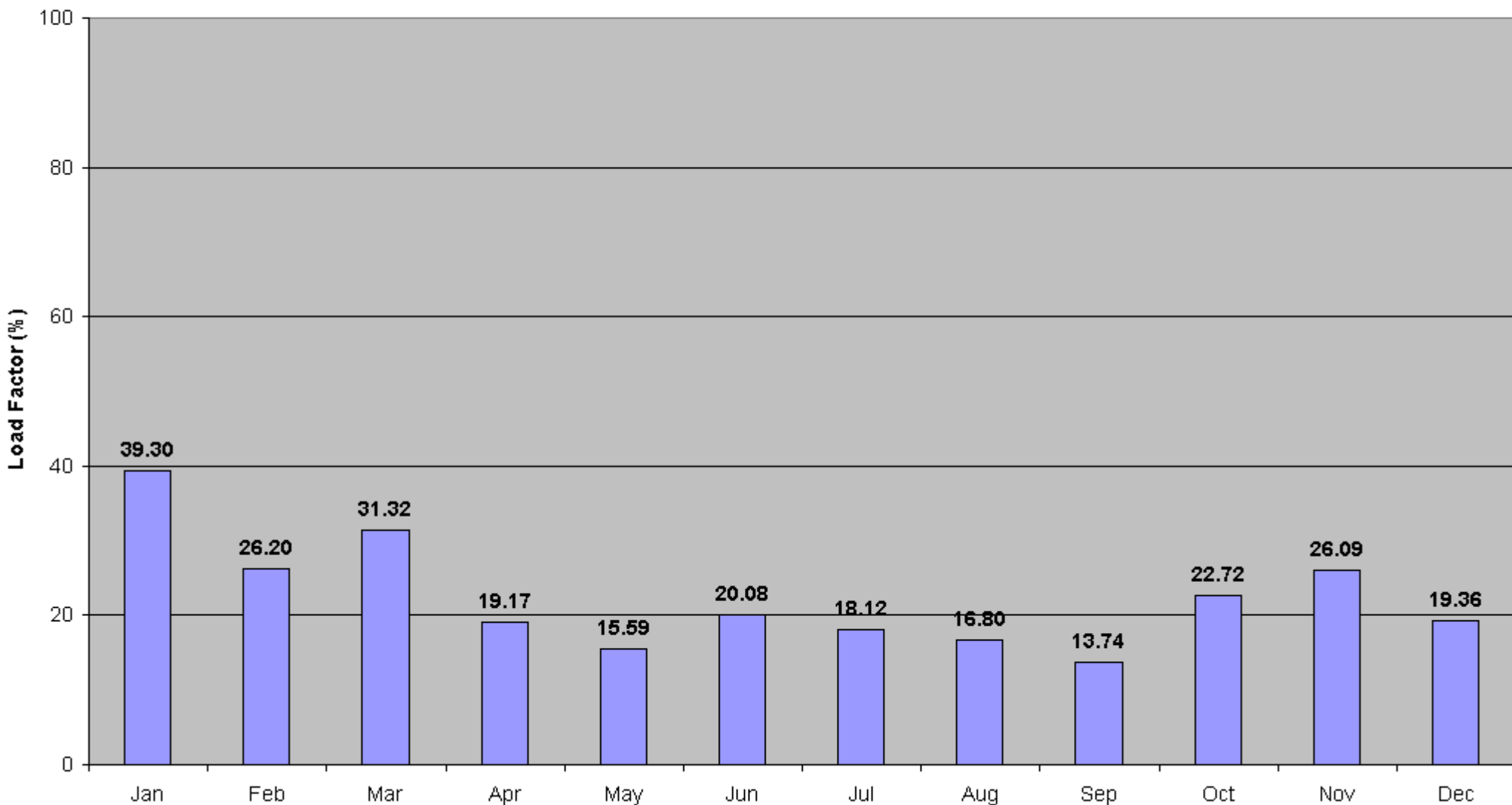


# UK Averages from 64 Met Office eather Stations at 1900hours - 2008

Average Monthly Load Factor = 22.4%

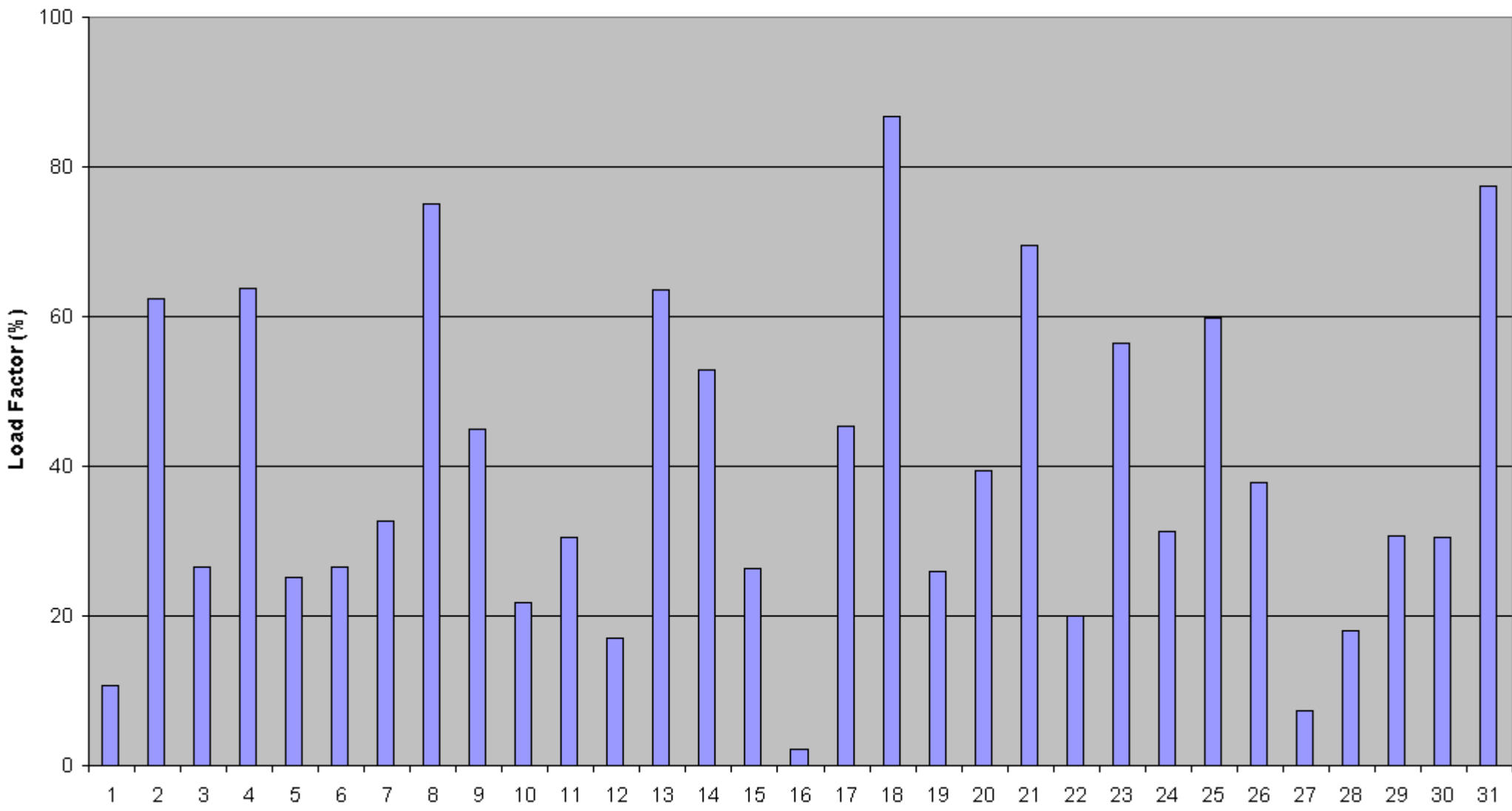
Average Number of Turbines not working = 29.0%



# UK Average from 64 Met Office Weather Stations at 19:00hours - January 2008

Average Monthly Load Factor = 39.3%

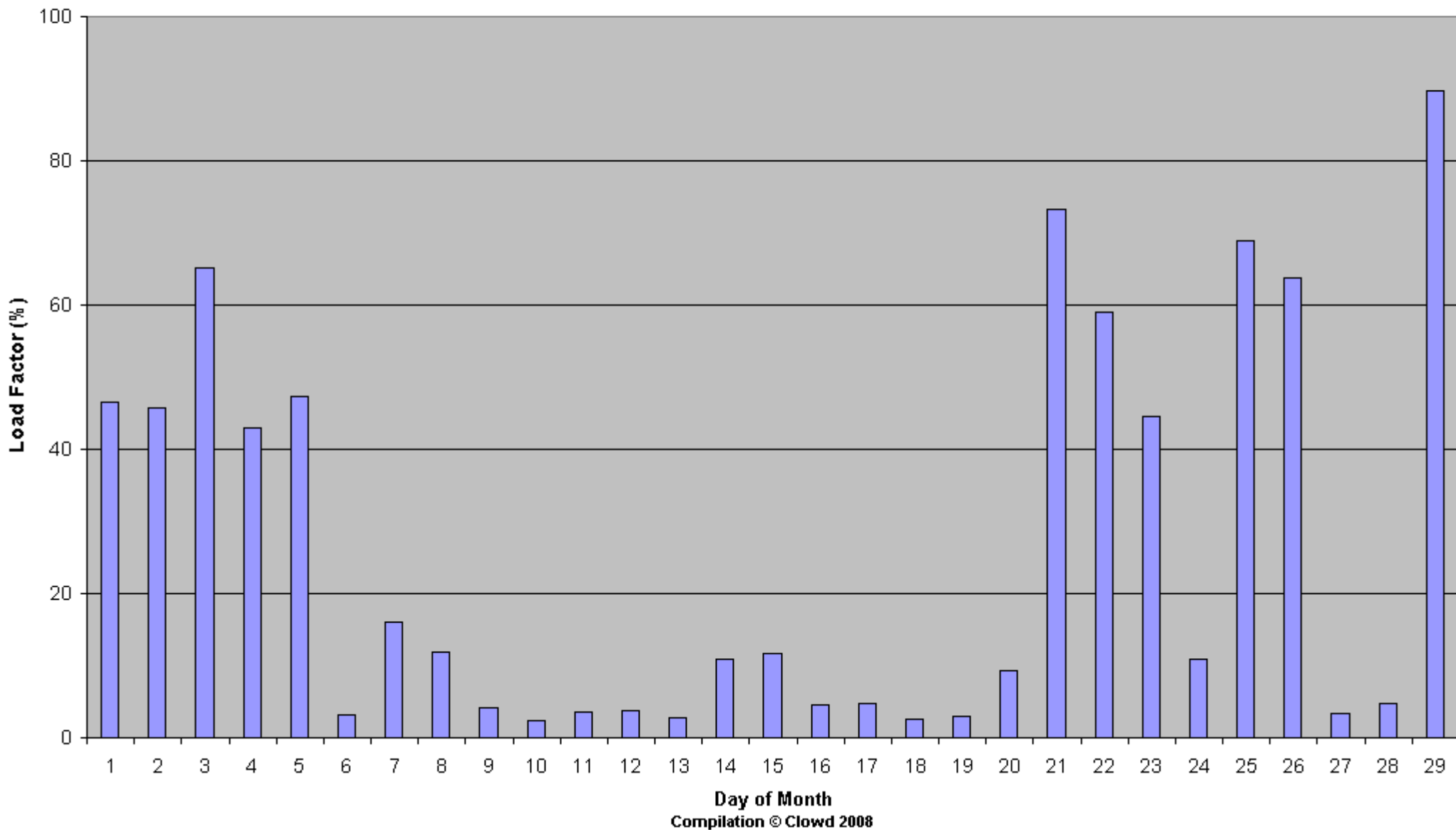
Average Number of Turbines not Working = 16.9%



# UK Average from 64 Met Office Weather Stations at 19:00hours - February 2008

Average Monthly Load Factor = 26.2%

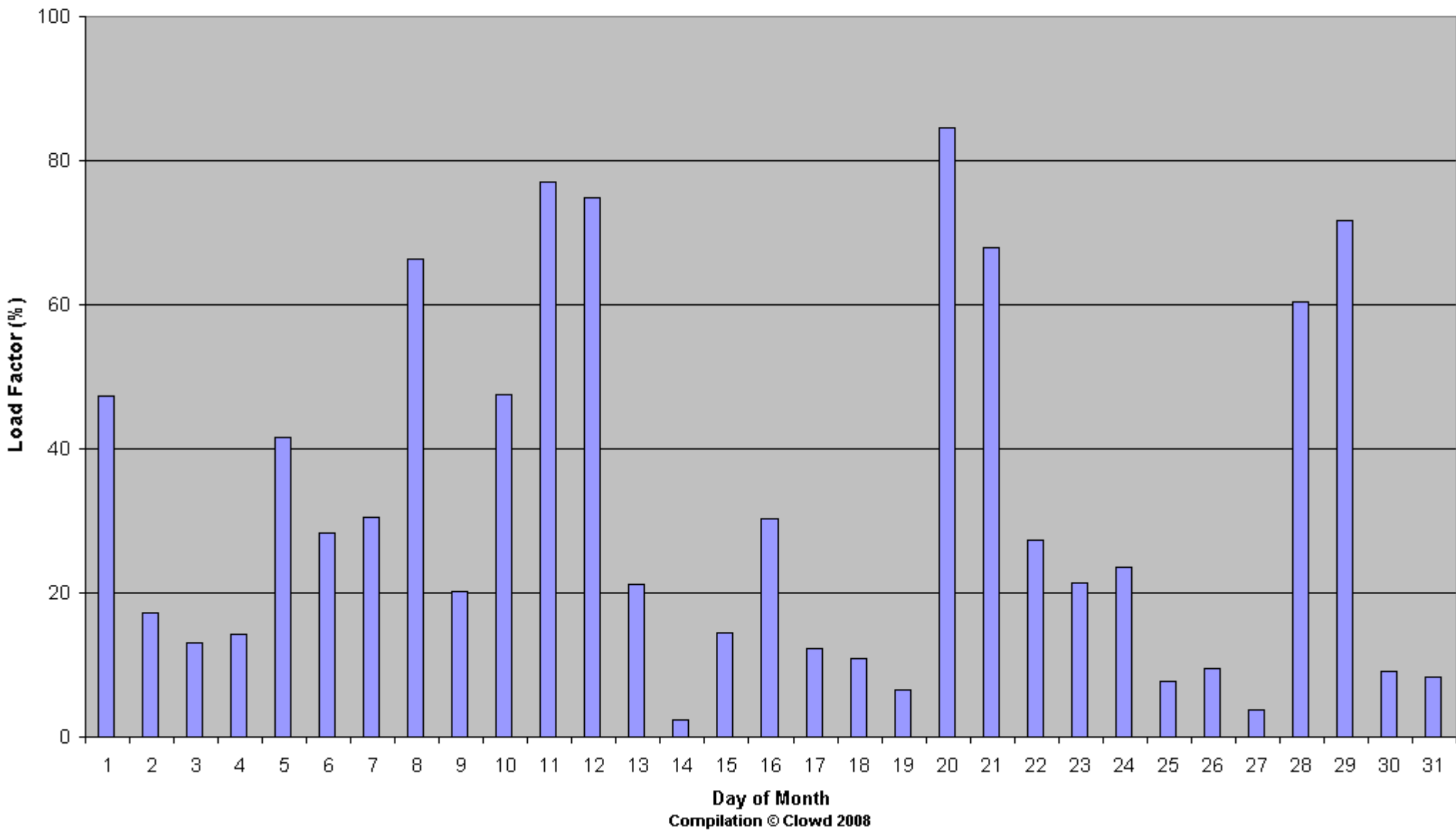
Average Number of Turbines not Working = 35.4%



# UK Average from 64 Met Office Weather Stations at 19:00hours - March 2008

Average Monthly Load Factor = 31.3%

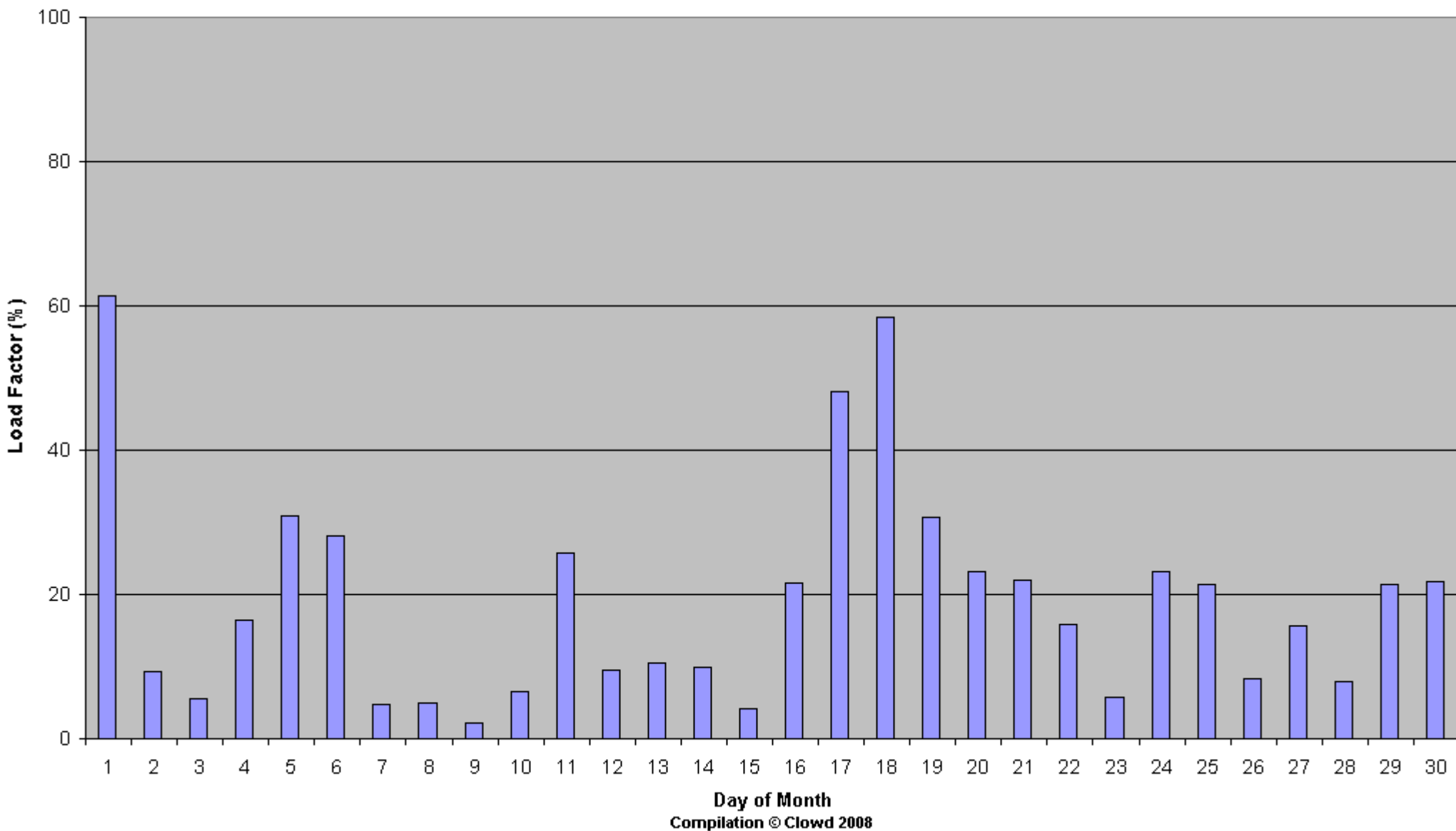
Average Number of Turbines not Working = 22.8%



# UK Average from 64 Met Office Weather Stations at 19:00hours - April 2008

Average Monthly Load Factor = 19.2%

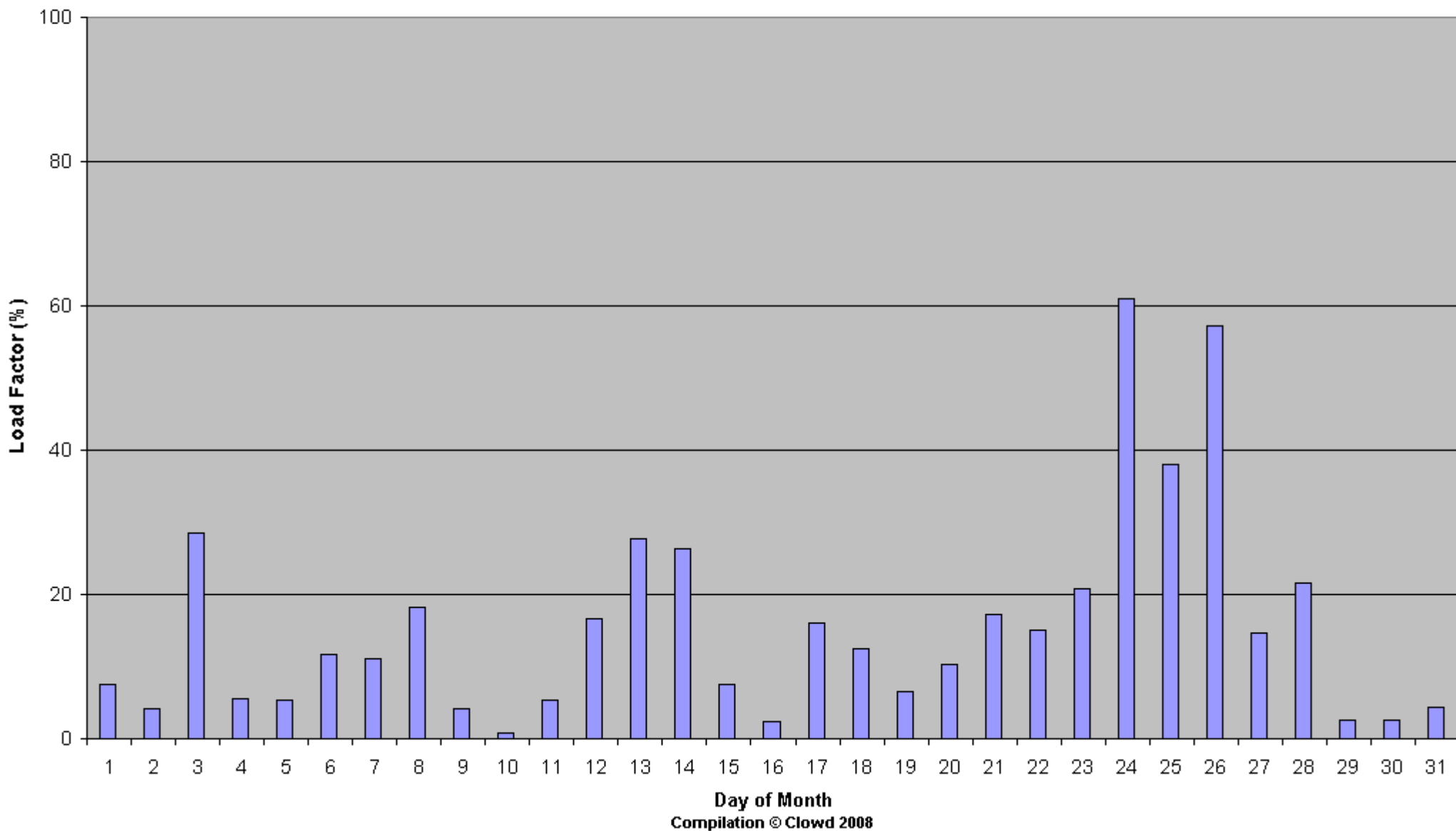
Average Number of Turbines not Working = 25.5%



# UK Average from 64 Met Office Weather Stations at 19:00hours - May 2008

Average Monthly Load Factor = 15.6%

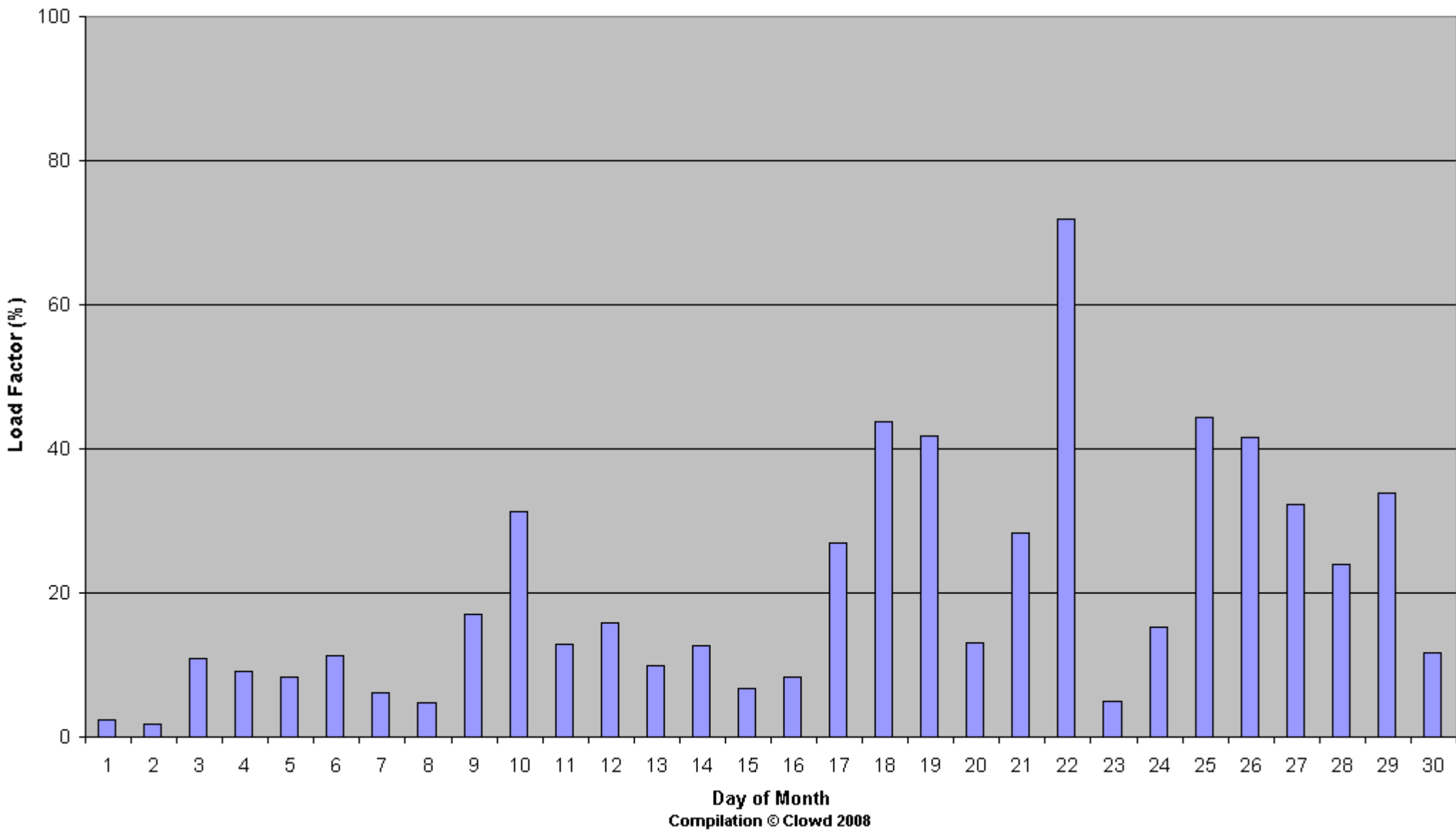
Average Number of Turbines not Working = 29.7%



# UK Average from 64 Met Office Weather Stations at 19:00hours - June 2008

Average Monthly Load Factor = 20.1%

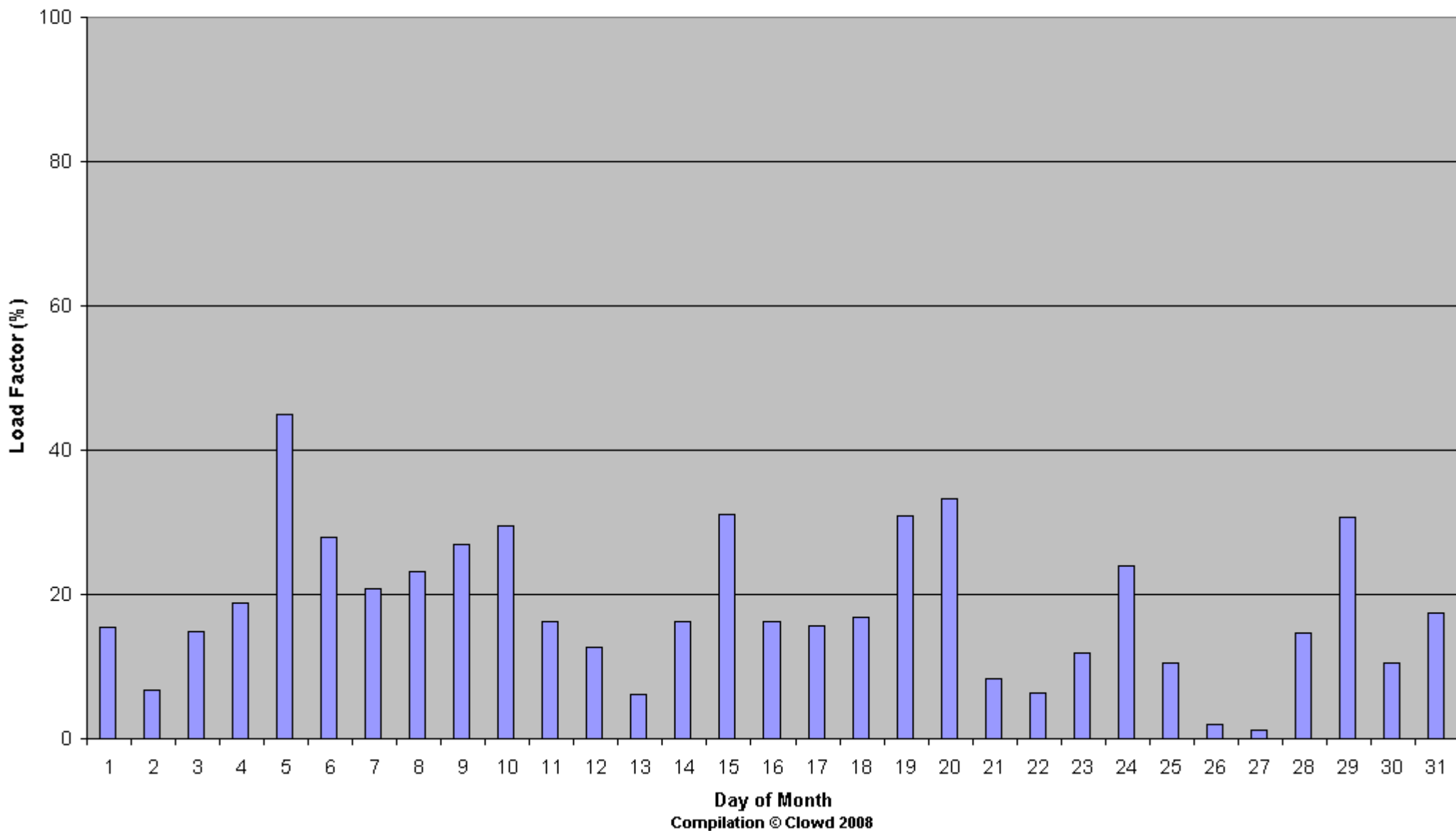
Average Number of Turbines not Working = 26.6%



# UK Average from 64 Met Office Weather Stations at 19:00hours - July 2008

Average Monthly Load Factor = 18.1%

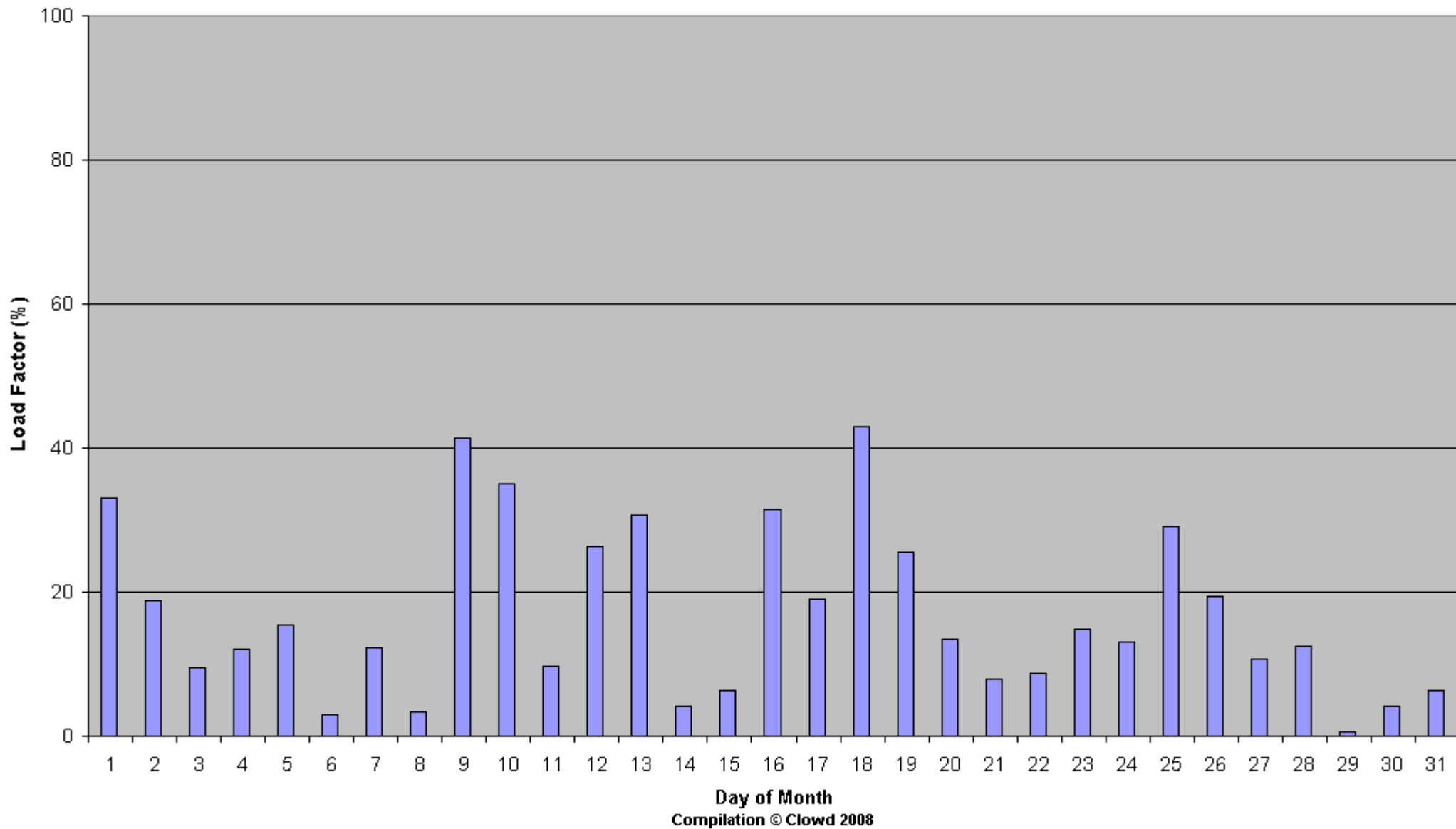
Average Number of Turbines not Working = 21.6%



# UK Average from 64 Met Office Weather Stations at 19:00hours - August 2008

Average Monthly Load Factor = 16.8%

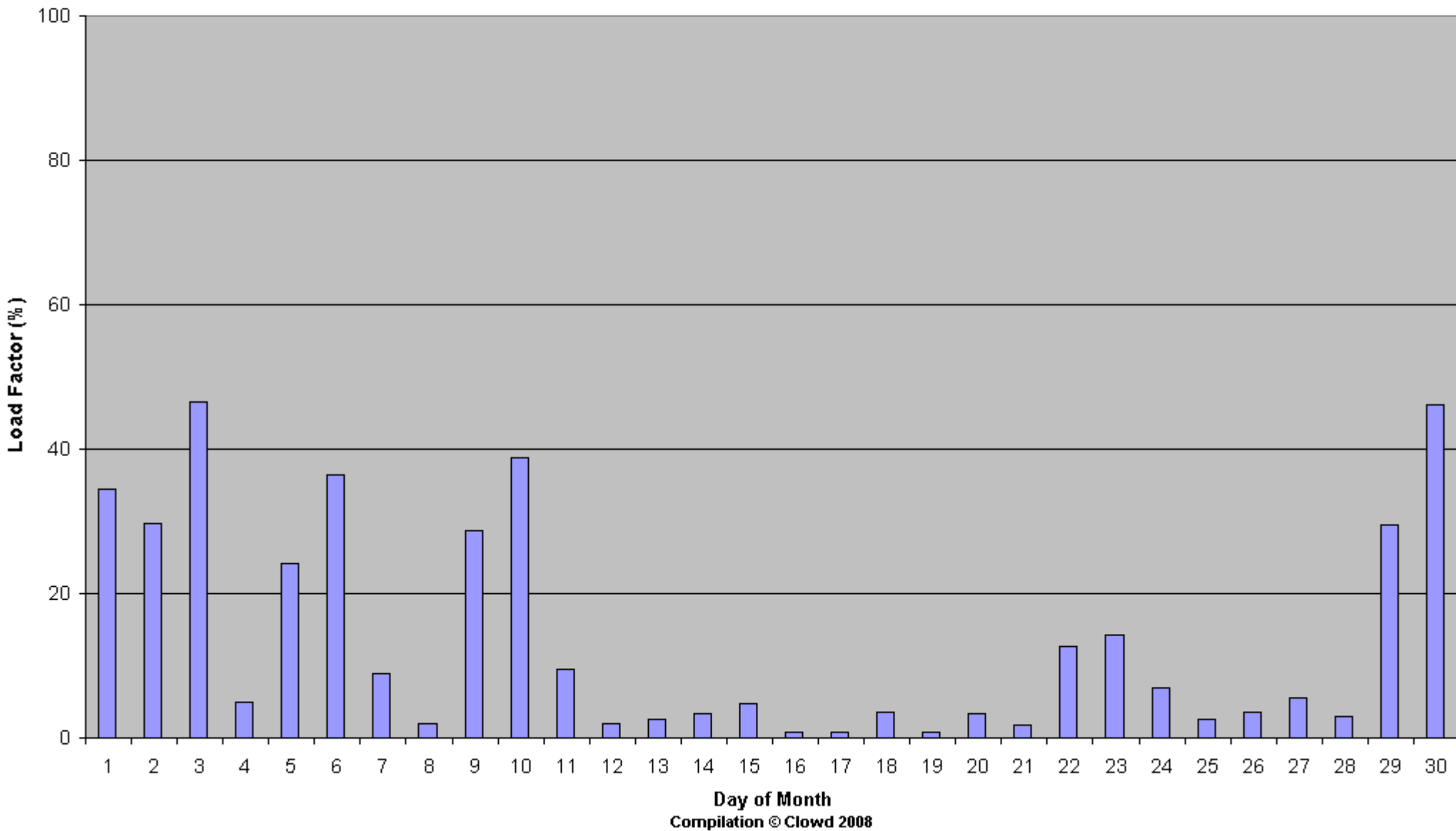
Average Number of Turbines not Working = 29.3%



UK Average from 64 Met Office Weather Stations at 19:00hours - September 2008

Average Monthly Load Factor = 13.7%

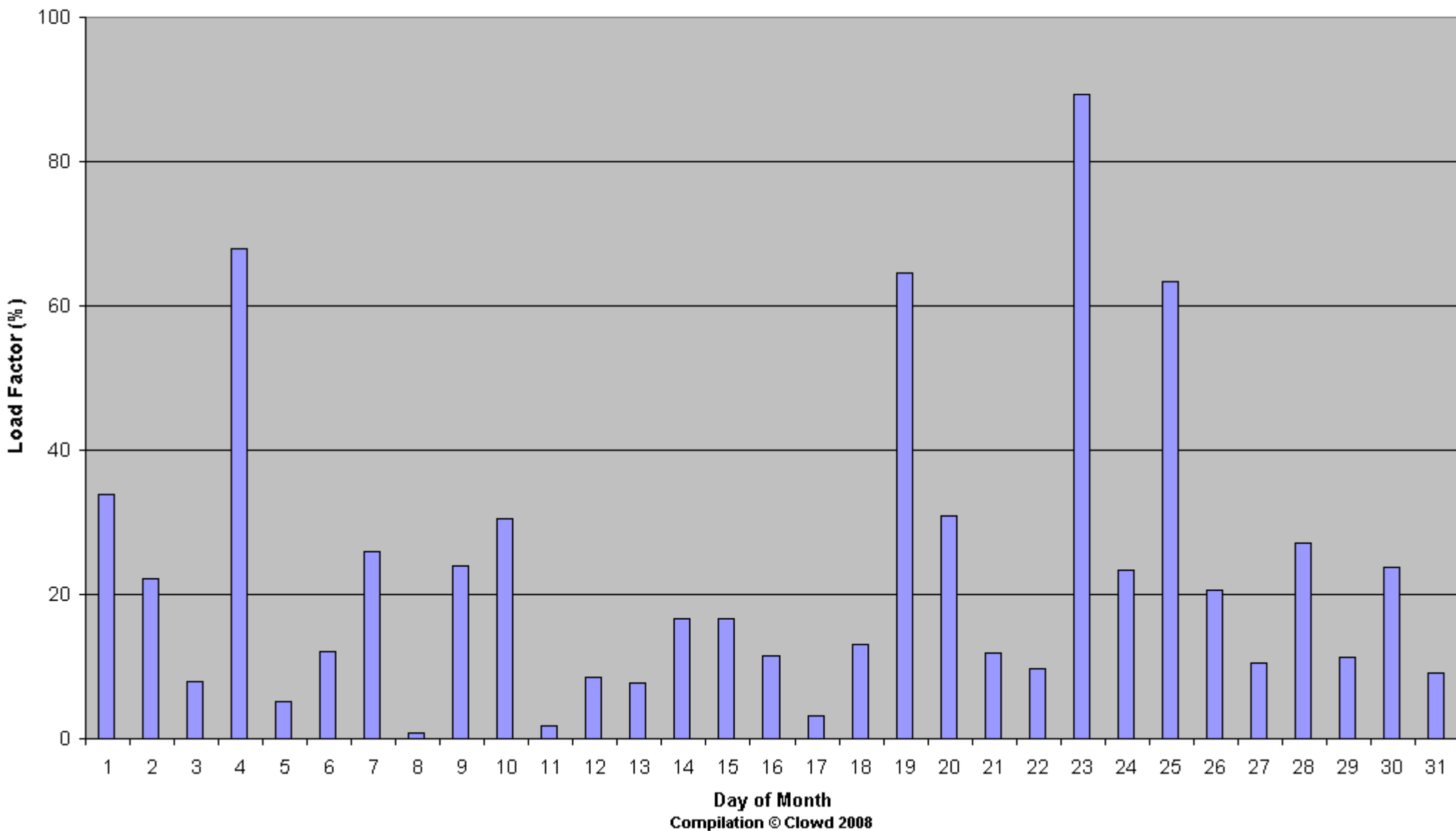
Average Number of Turbines not Working = 46.0%



# UK Average from 64 Met Office Weather Stations at 19:00hours - October 2008

Average Monthly Load Factor = 22.7%

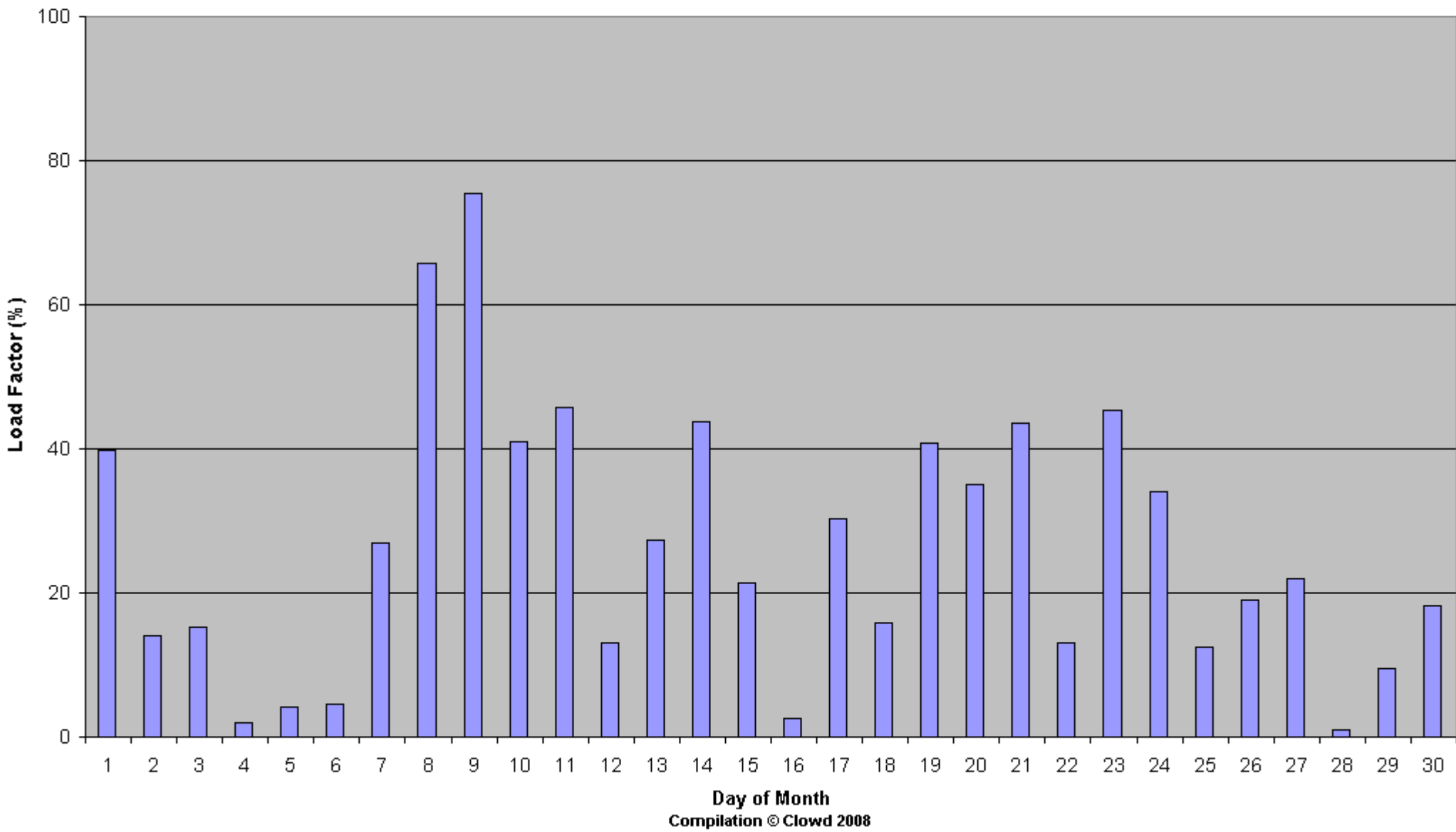
Average Number of Turbines not Working = 29.4%



UK Average from 64 Met Office Weather Stations at 19:00hours - November 2008

Average Monthly Load Factor = 26.1%

Average Number of Turbines not Working = 25.1%



UK Average from 64 Met Office Weather Stations at 19:00hours - December 2008

Average Monthly Load Factor = 19.4%

Average Number of Turbines not Working = 40.2%

