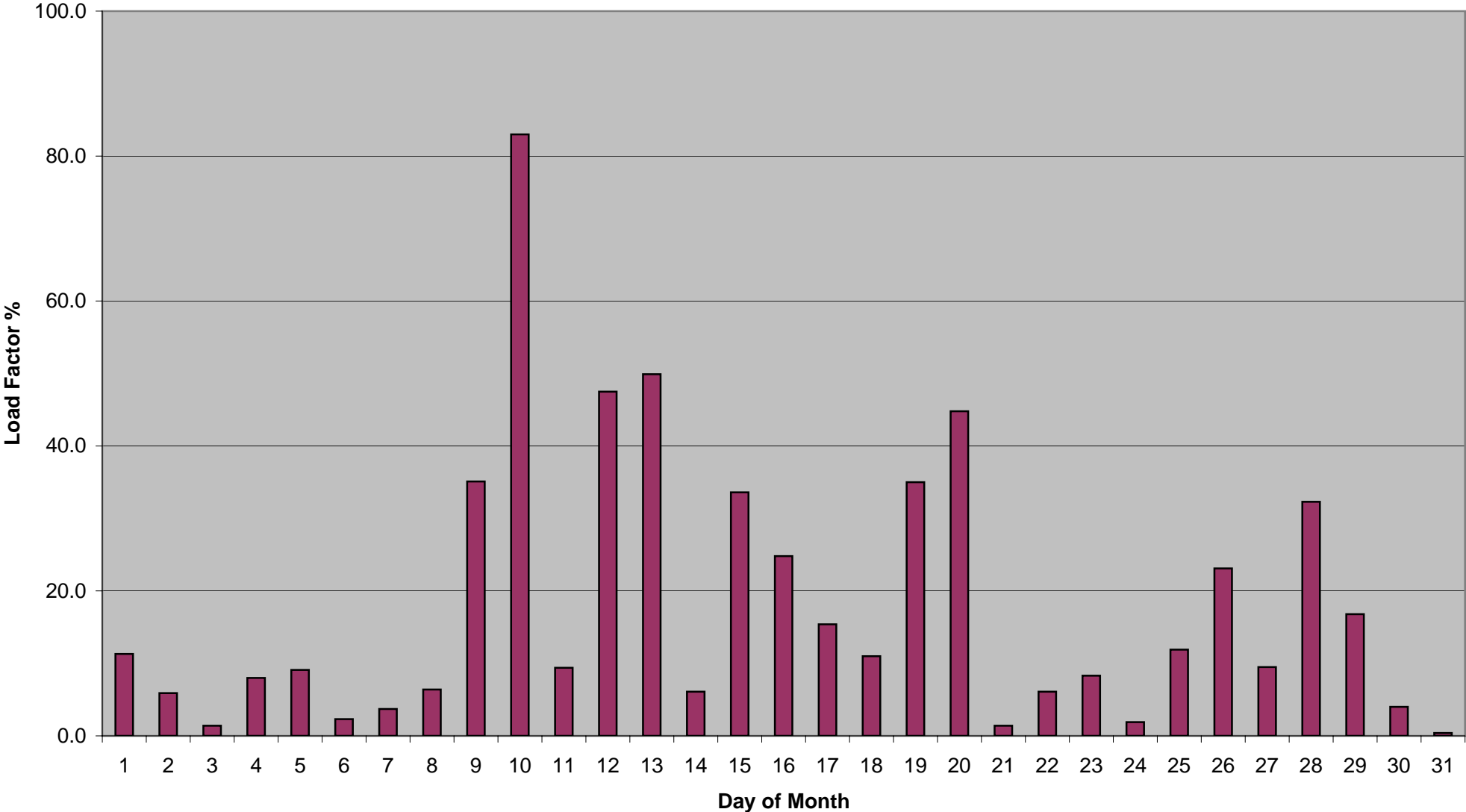


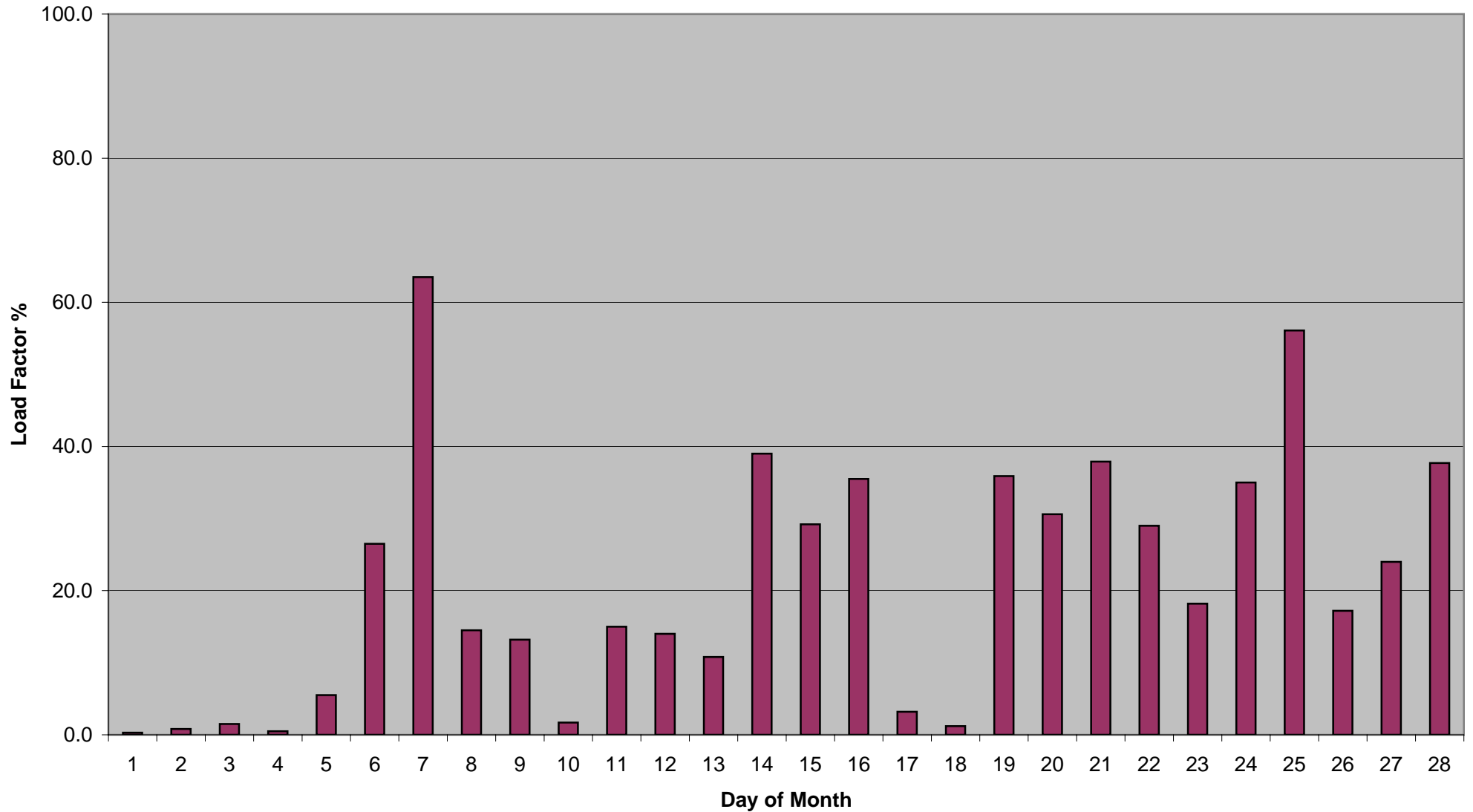
UK Average from 64 Met Office Weather Stations at 19:00hours - January 2006

Average Monthly Load Factor = 18.0%

Average Number of Turbines not working = 37.4%



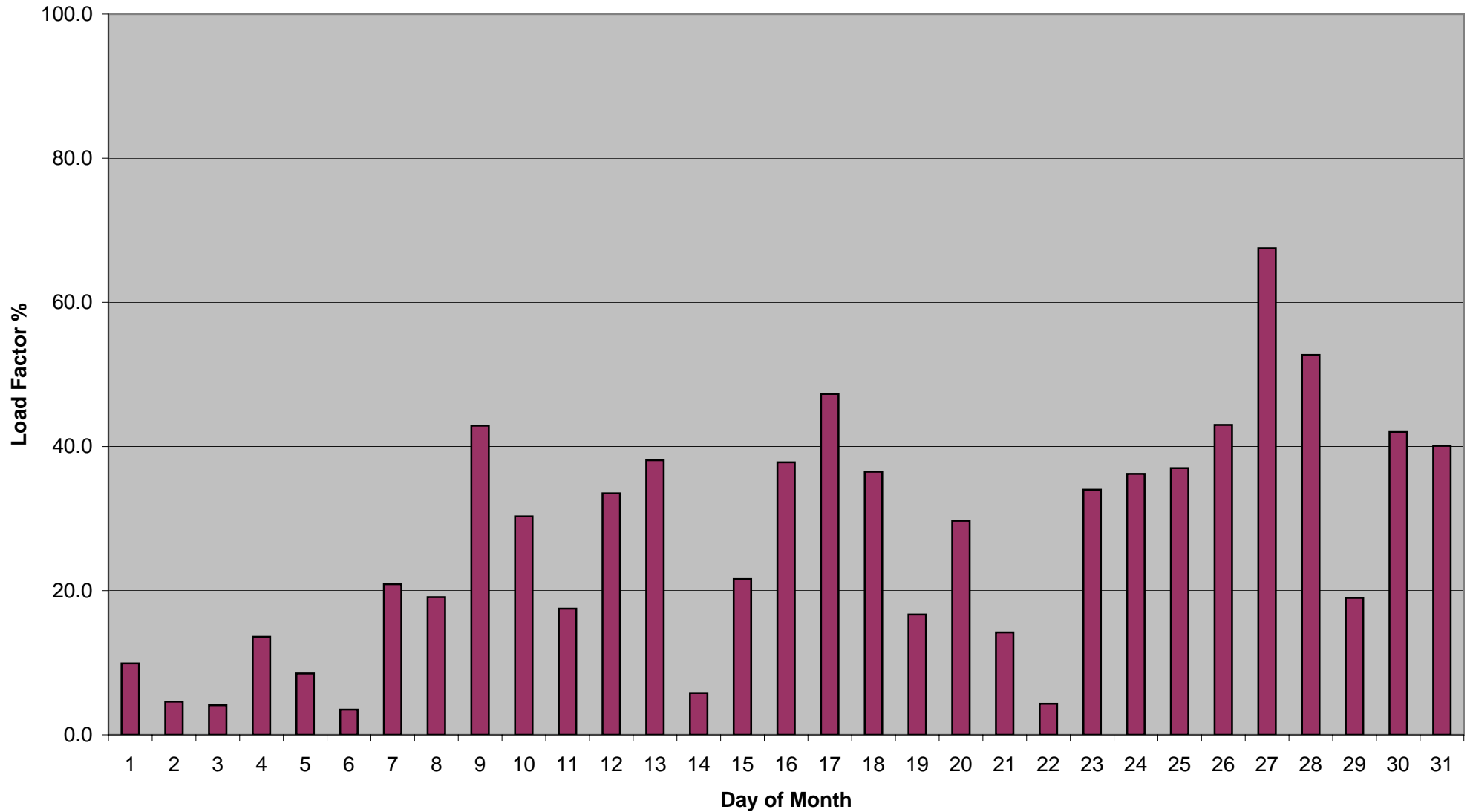
UK Average from 64 Met Office Weather Stations at 19:00hours - February 2006
Average Monthly Load Factor = 21.3%
Average Number of Turbines not working = 32.4%



UK Average from 64 Met Office Weather Stations at 19:00hours - March 2006

Average Monthly Load Factor = 26.8%

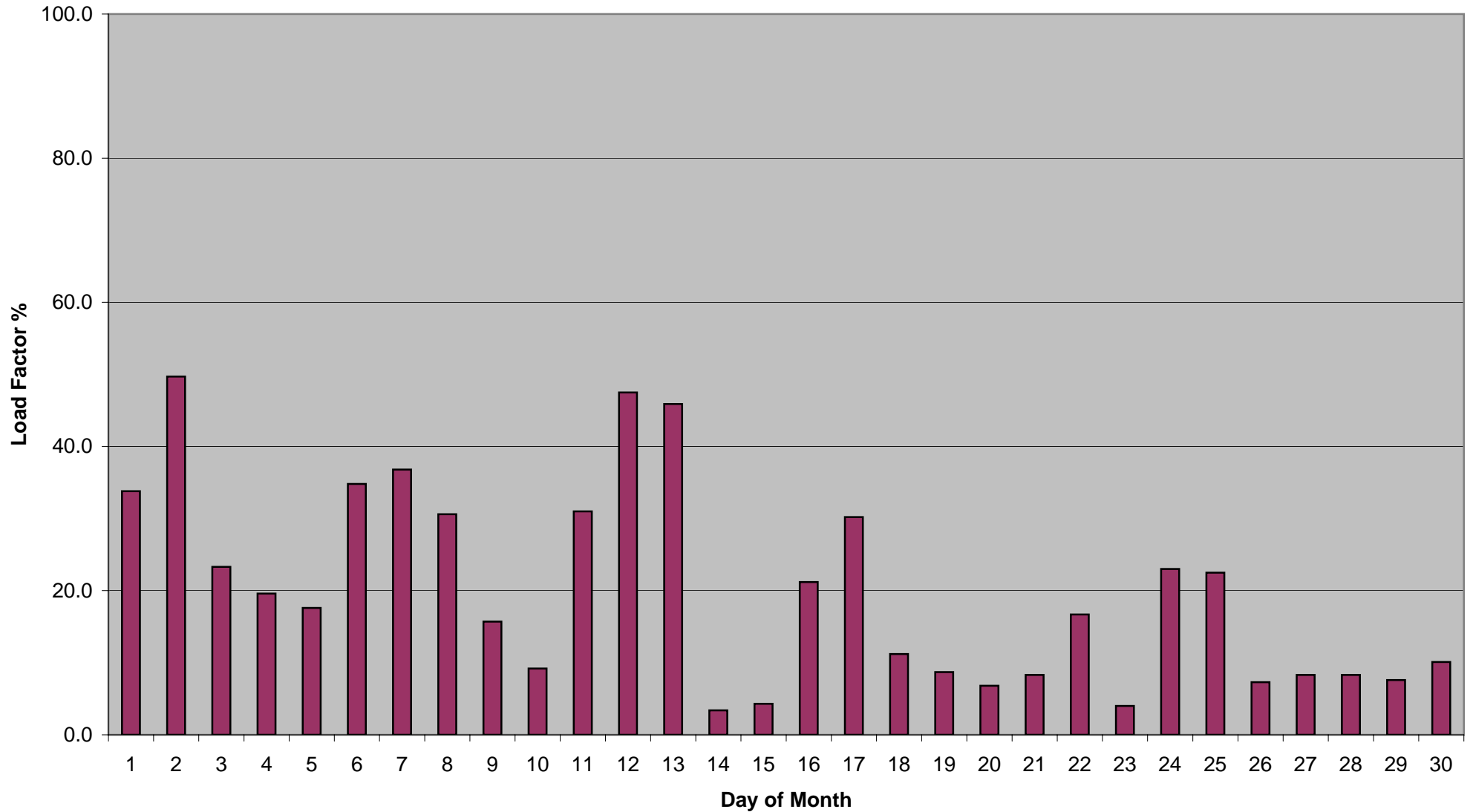
Average Number of Turbines not working = 23.3%



UK Average from 64 Met Office Weather Stations at 19:00hours - April 2006

Average Monthly Load Factor = 19.9%

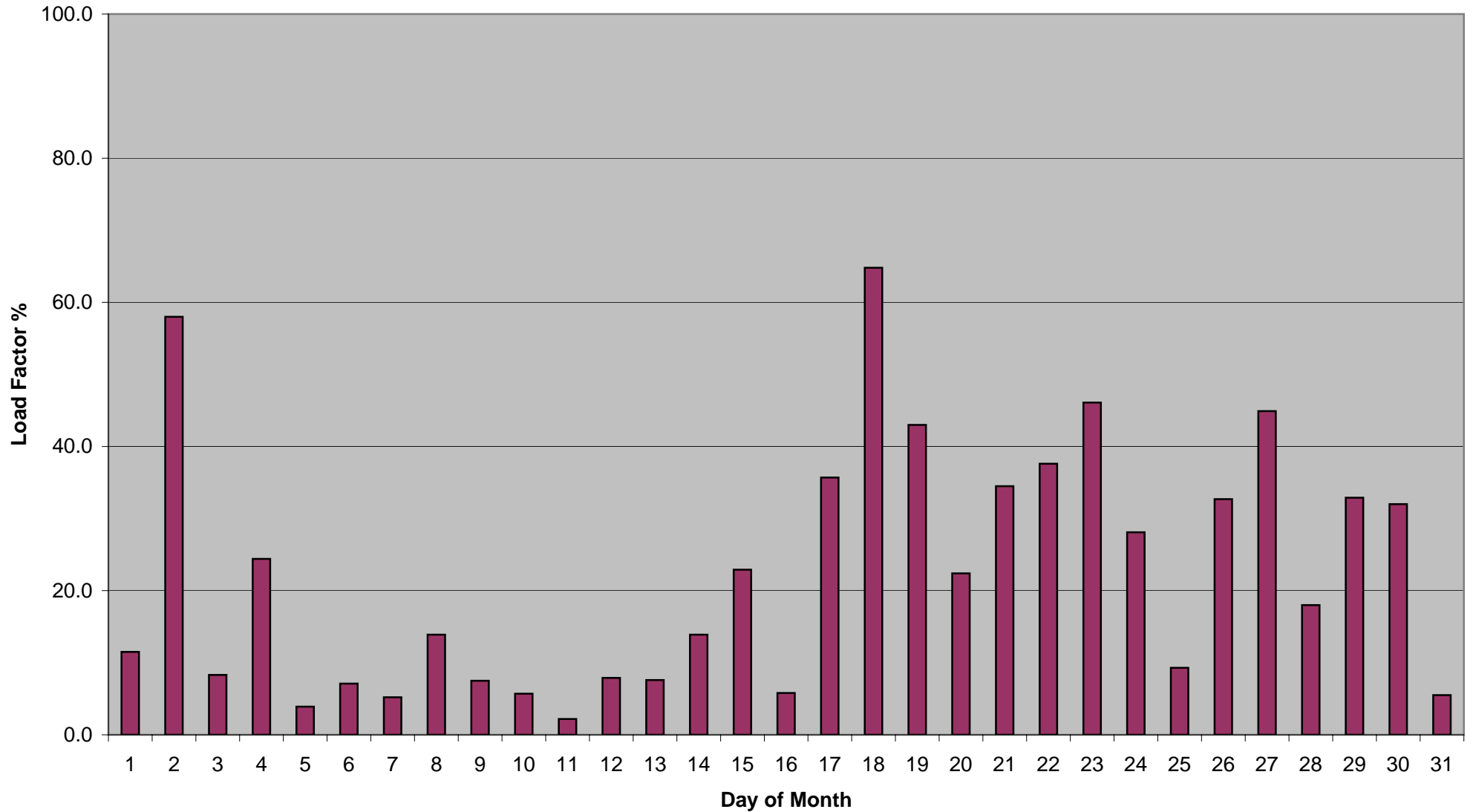
Average Number of Turbines not working = 27.0%



UK Average from 64 Met Office Weather Stations at 19:00hours - May 2006

Average Monthly Load Factor = 22.4%

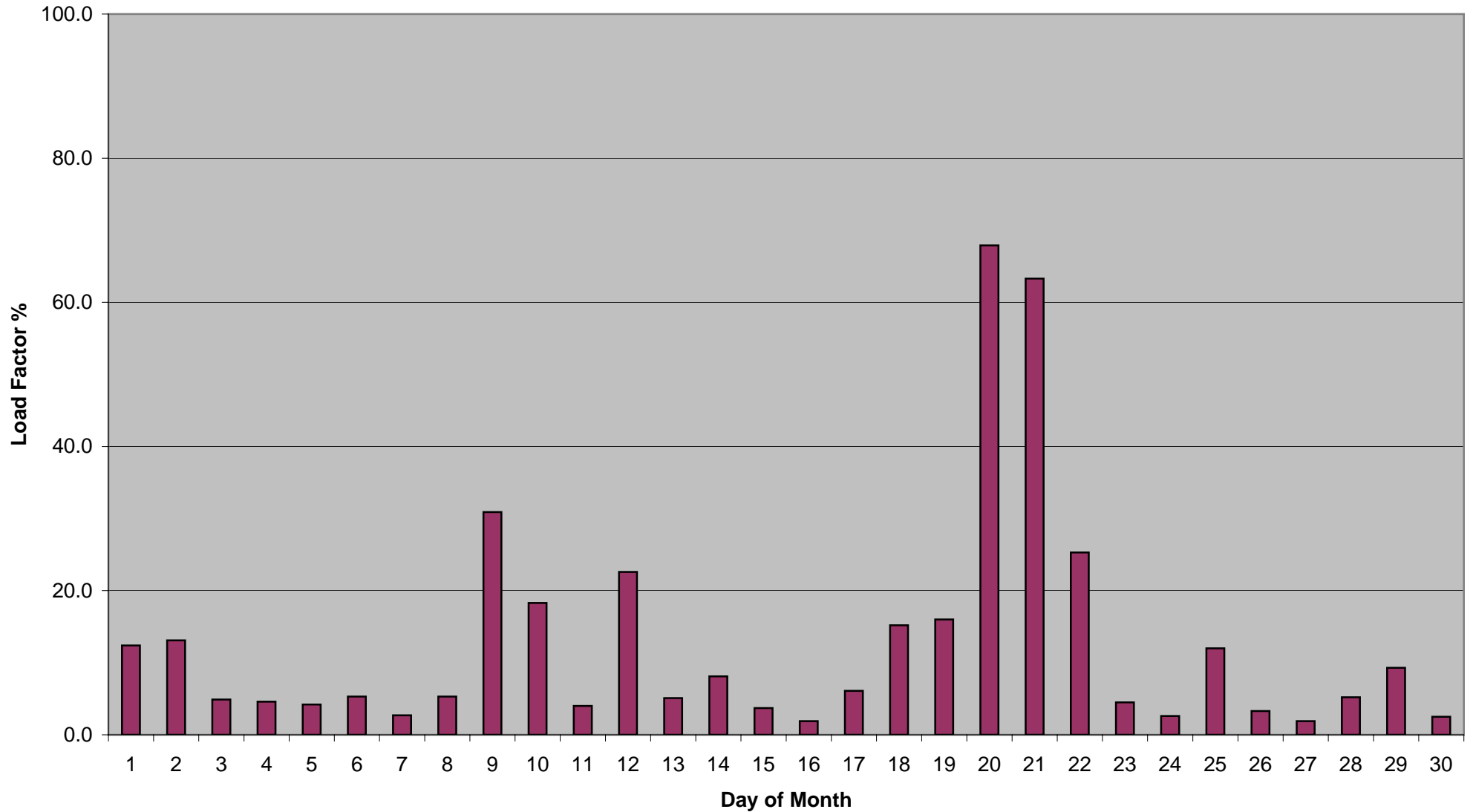
Average Number of Turbines not working = 25.4%



UK Average from 64 Met Office Weather Stations at 19:00hours - June 2006

Average Monthly Load Factor = 12.7%

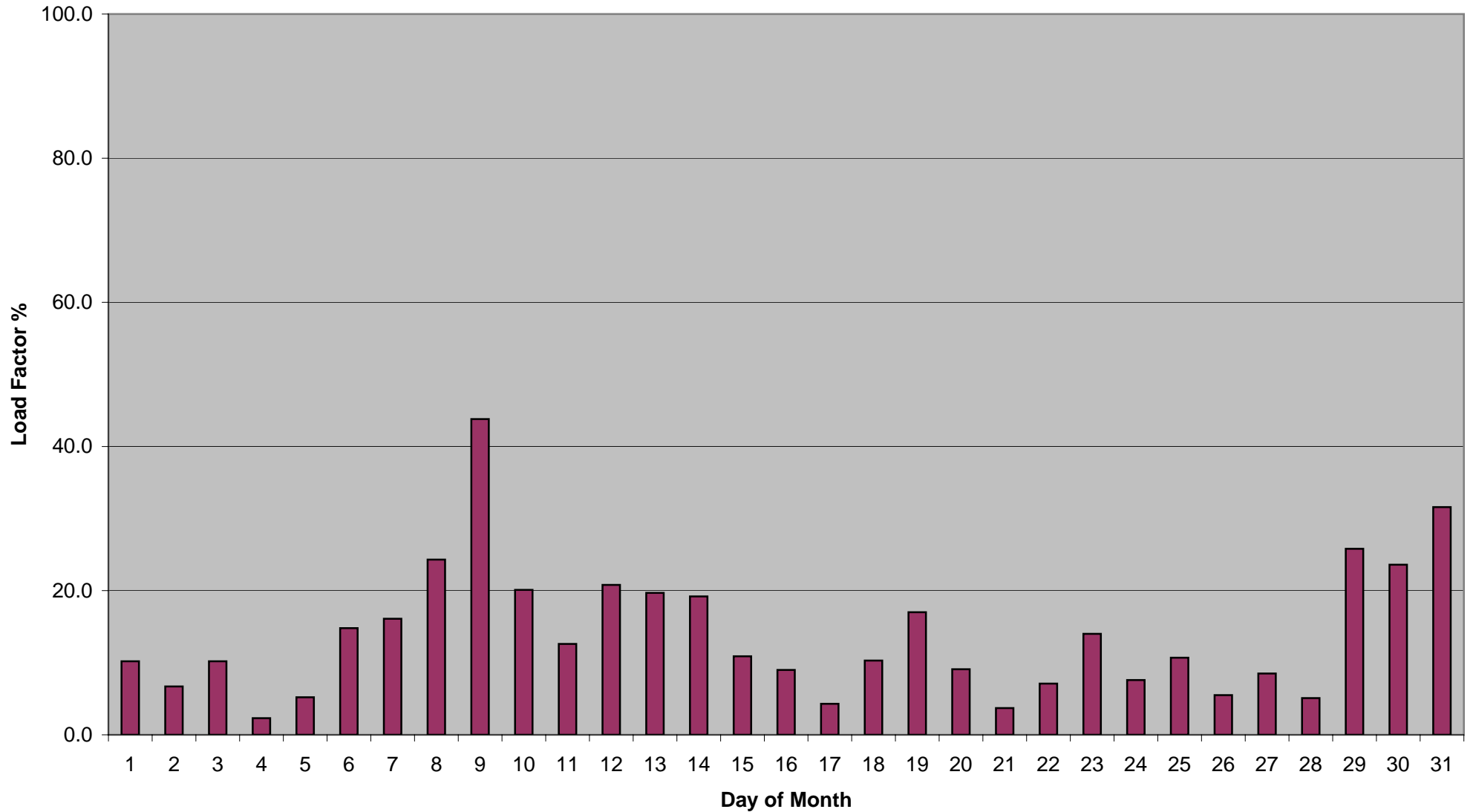
Average Number of Turbines not working = 34.5%



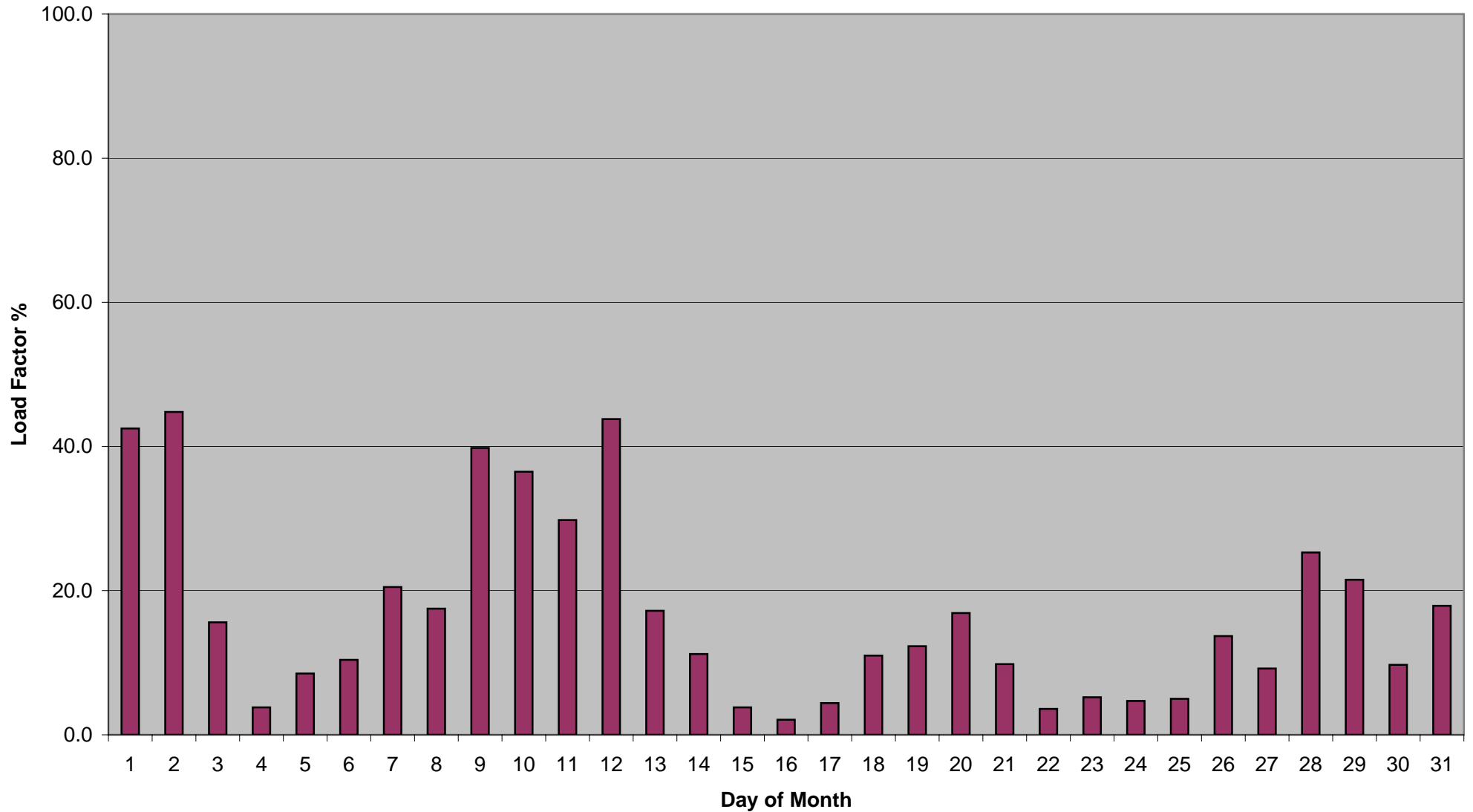
UK Average from 64 Met Office Weather Stations at 19:00hours - July 2006

Average Monthly Load Factor = 13.9%

Average Number of Turbines not working = 17.8%



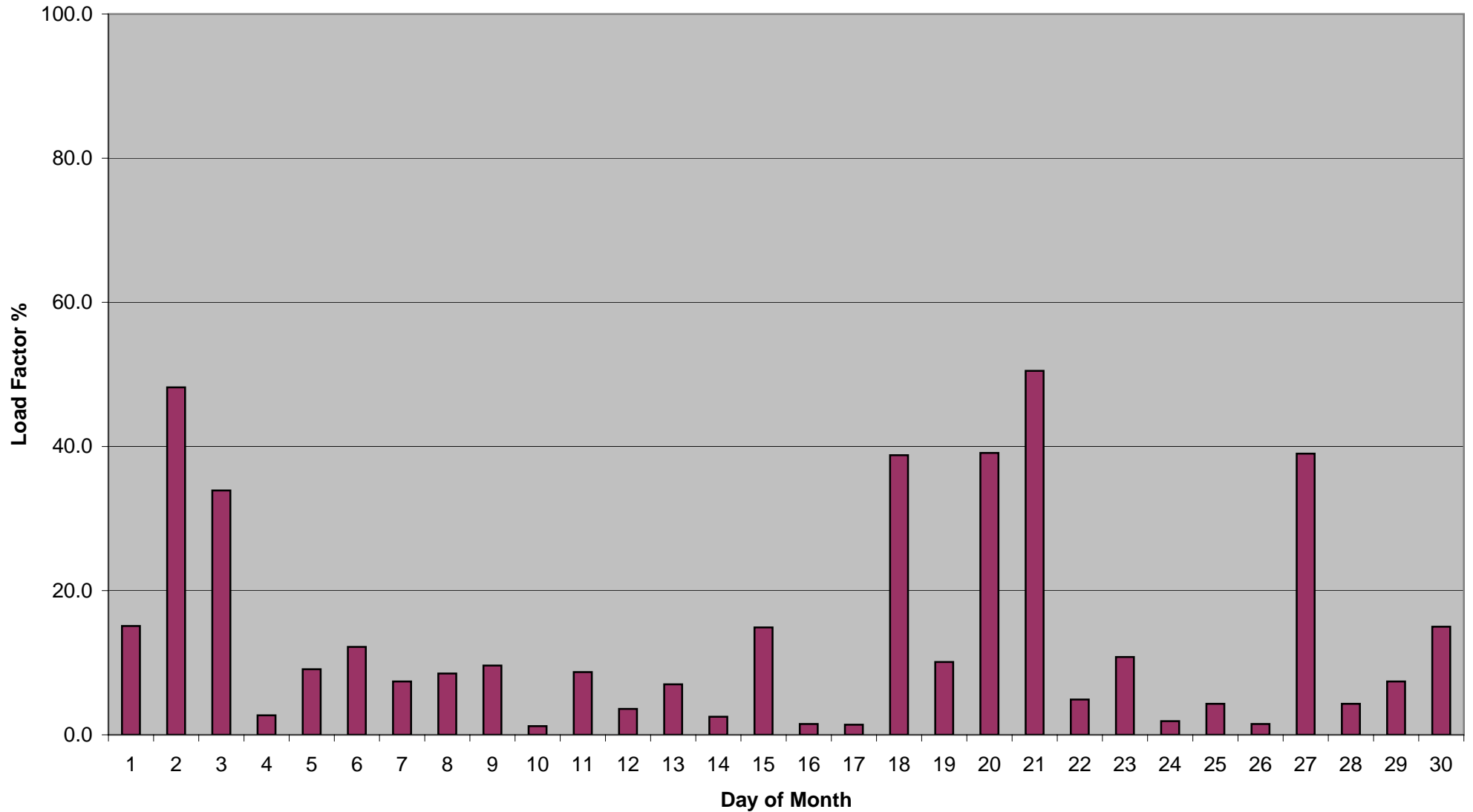
UK Average from 64 Met Office Weather Stations at 19:00hours - August 2006
Average Monthly Load Factor = 16.7%
Average Number of Turbines not working = 31.5%



UK Average from 64 Met Office Weather Stations at 19:00hours - September 2006

Average Monthly Load Factor = 13.8%

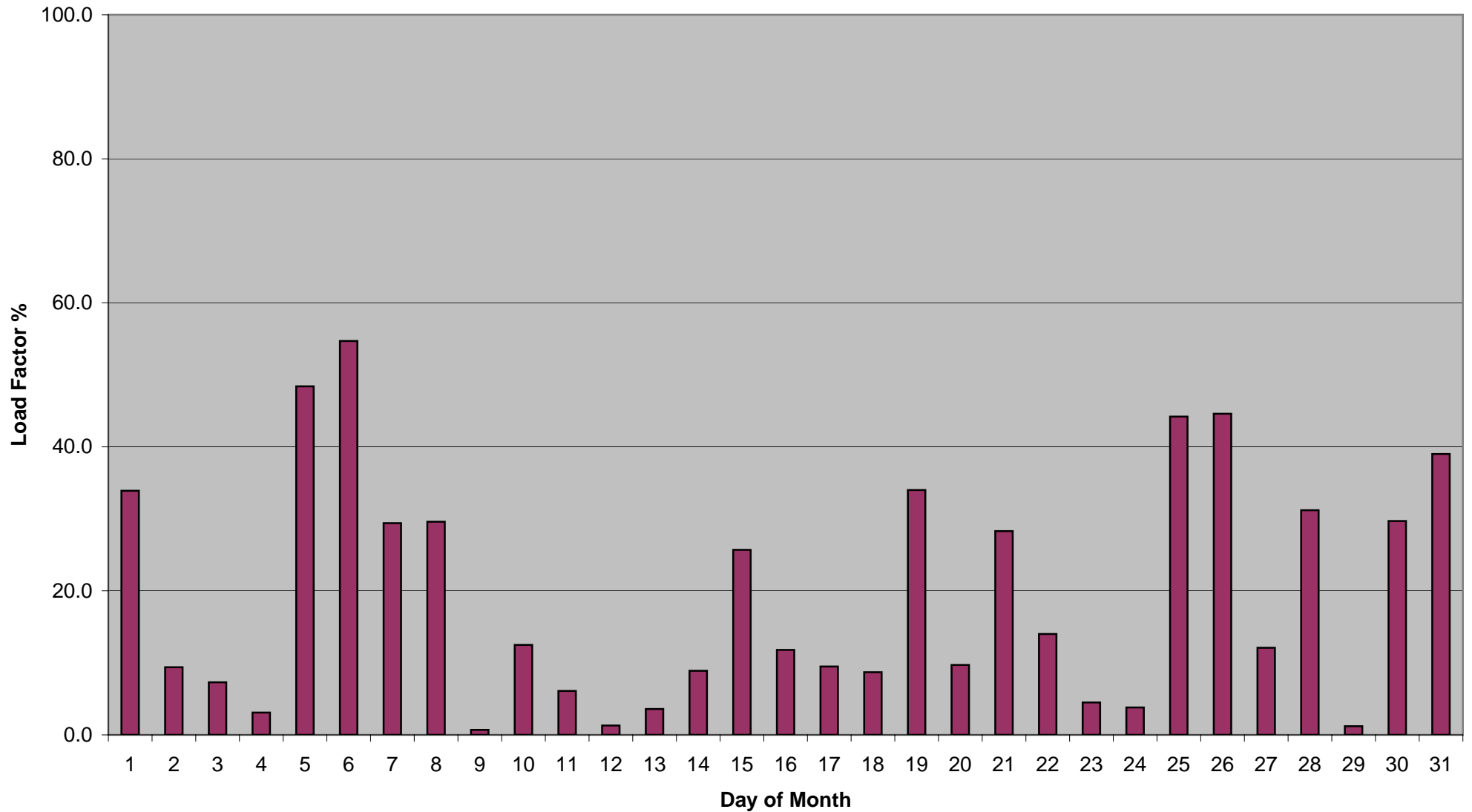
Average Number of Turbines not working = 41.5%



UK Average from 64 Met Office Weather Stations at 19:00hours - October 2006

Average Monthly Load Factor = 19.4%

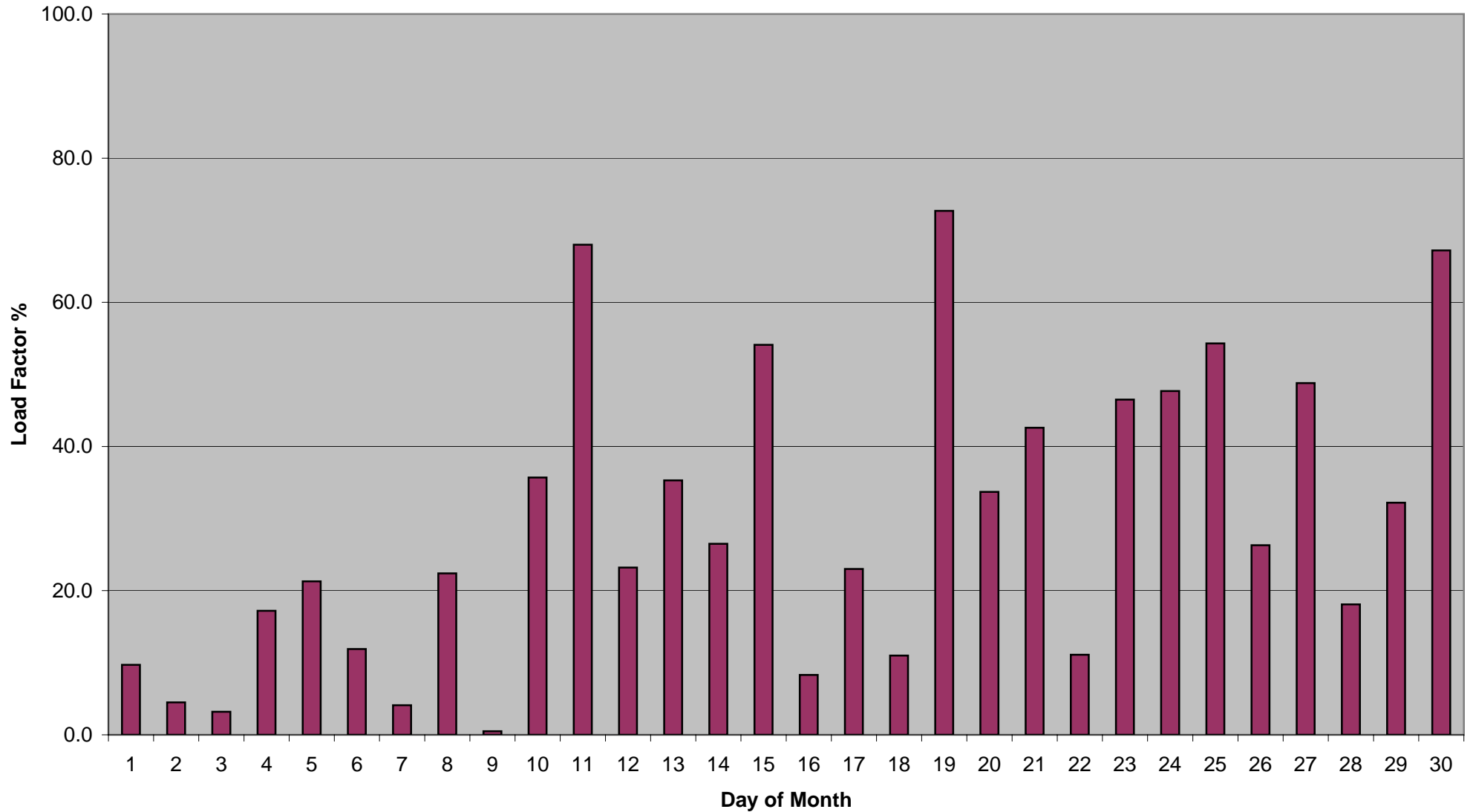
Average Number of Turbines not working = 33.2%



UK Average from 64 Met Office Weather Stations at 19:00hours - November 2006

Average Monthly Load Factor = 29.4%

Average Number of Turbines not working = 23.9%



UK Average from 64 Met Office Weather Stations at 19:00hours - December 2006

Average Monthly Load Factor = 34.3%

Average Number of Turbines not working = 30.8%

