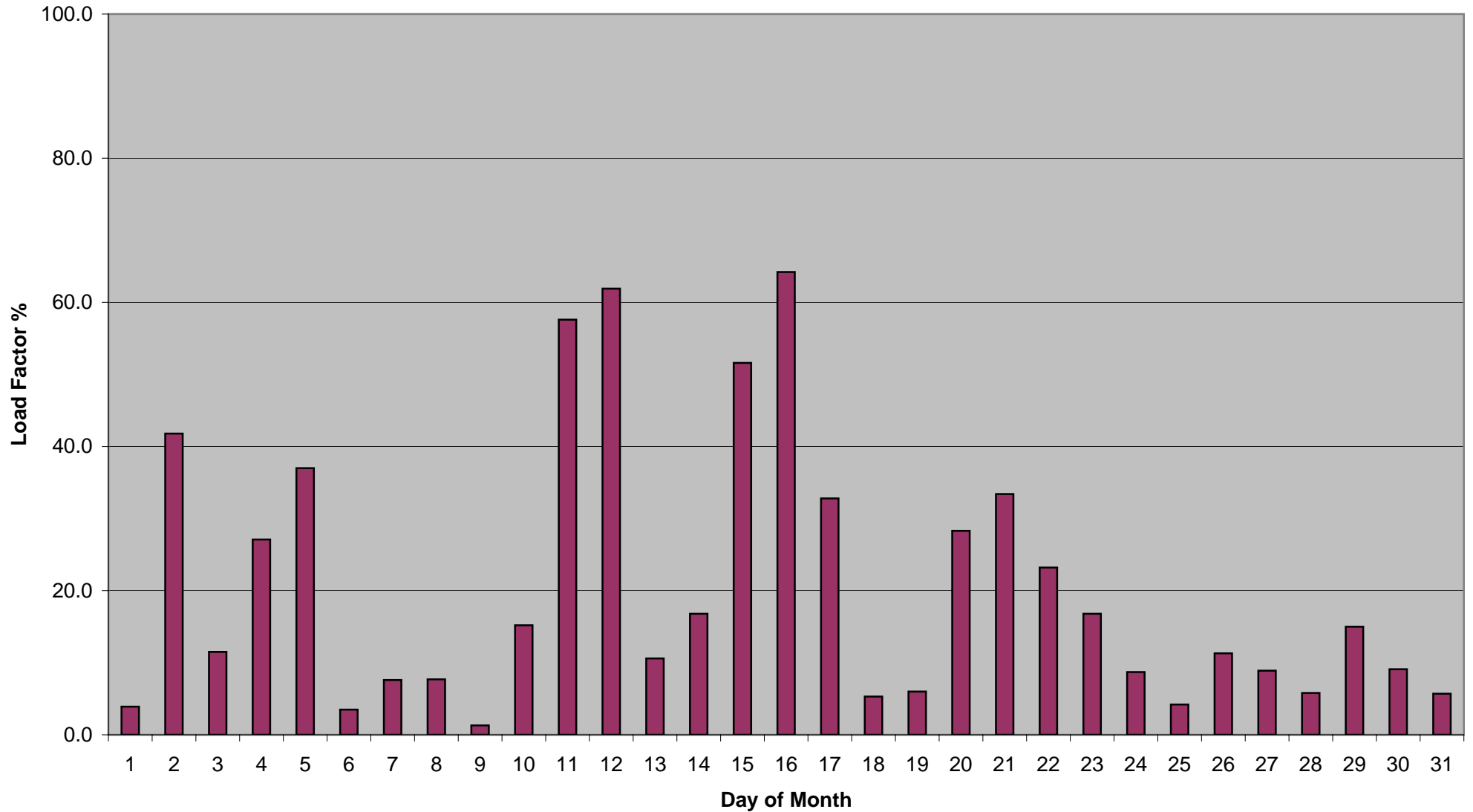


UK Average from 64 Met Office Weather Stations at 19:00hours - March 2005

Average Monthly Load Factor = 20.4%

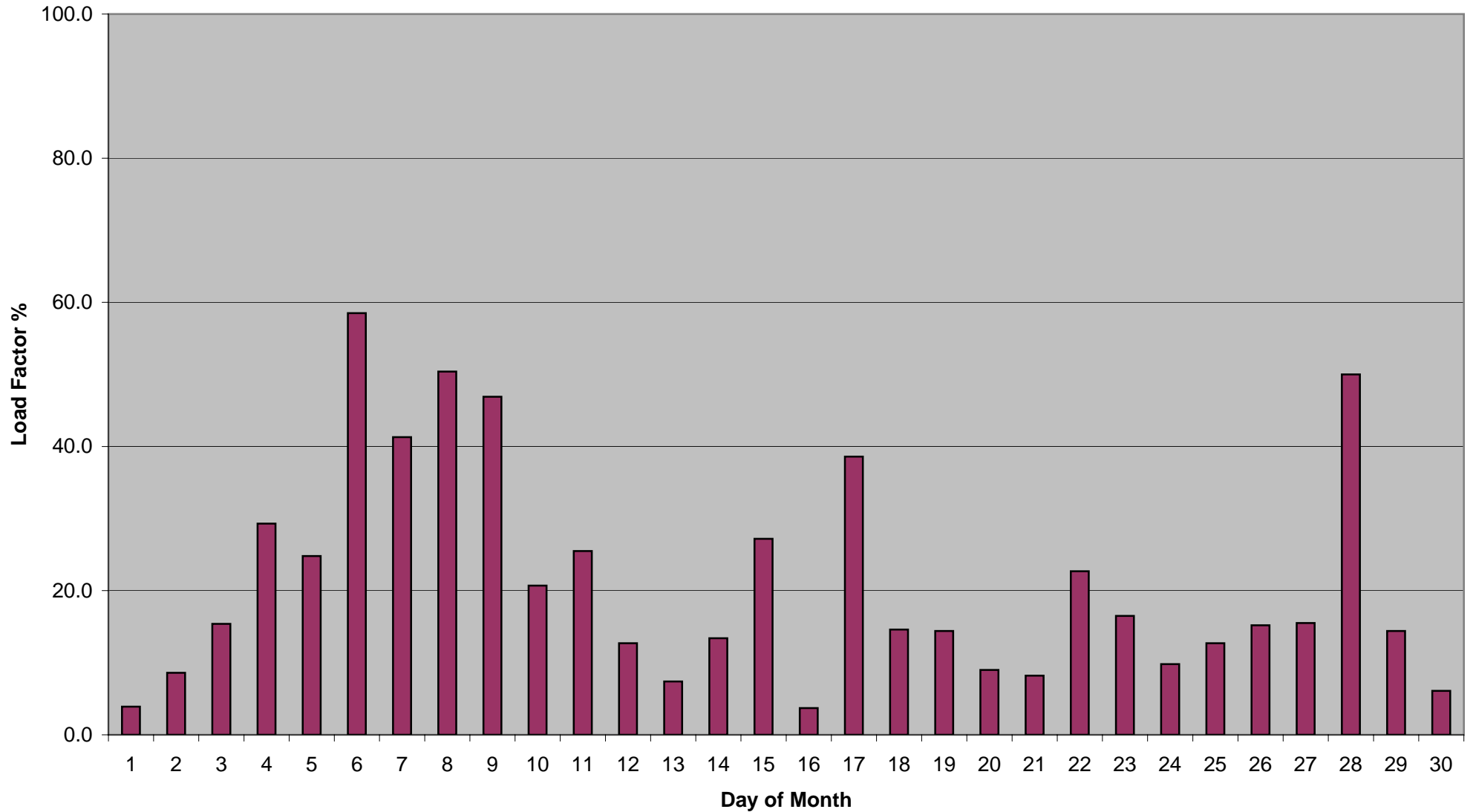
Average Number of Turbines not working = 32.7%



UK Average from 64 Met Office Weather Stations at 19:00hours - April 2005

Average Monthly Load Factor = 21.2%

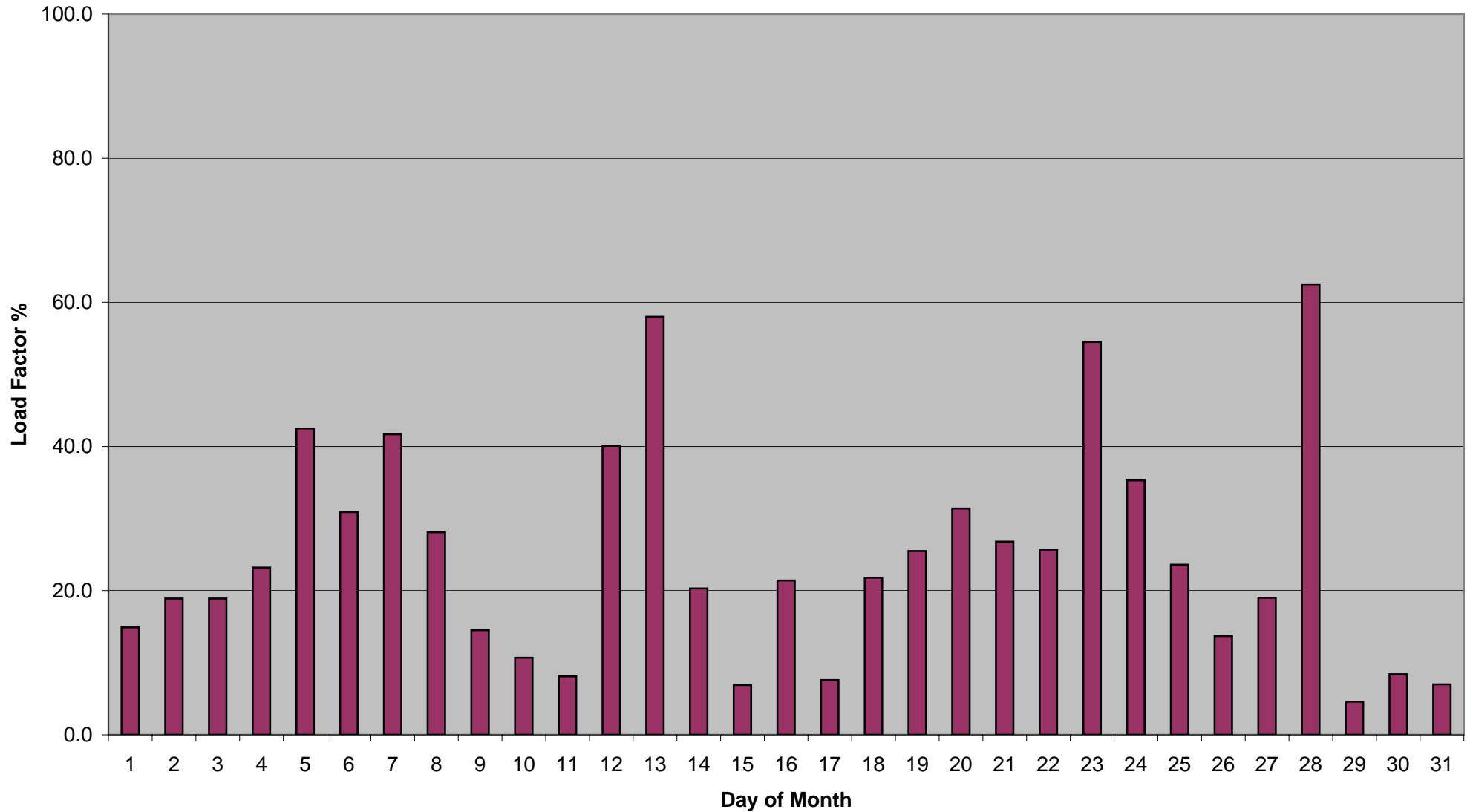
Average Number of Turbines not working = 23.3%



UK Average from 64 Met Office Weather Stations at 19:00hours - May 2005

Average Monthly Load Factor = 24.7%

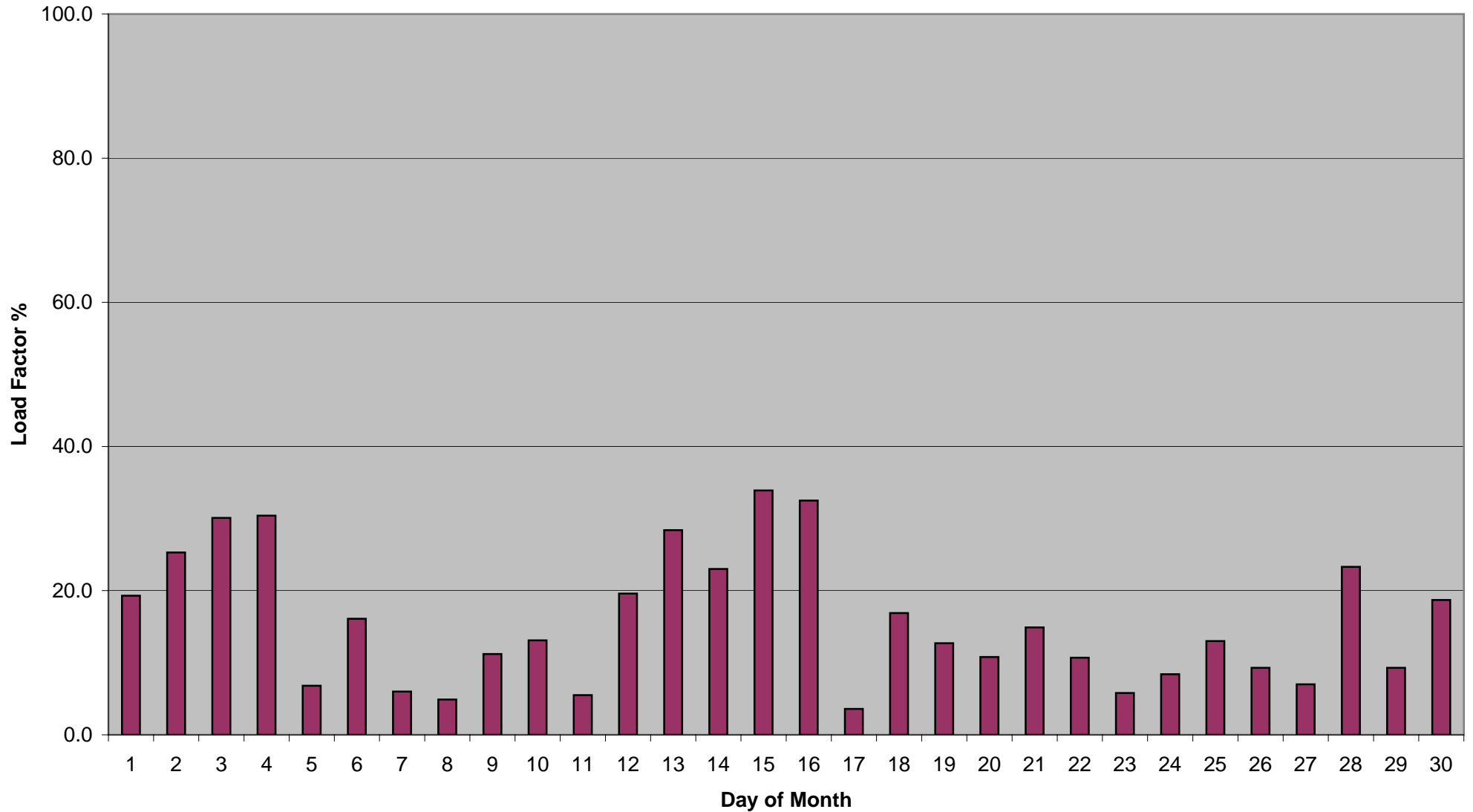
Average Number of Turbines not working = 19.9%



UK Average from 64 Met Office Weather Stations at 19:00hours - June 2005

Average Monthly Load Factor = 15.7%

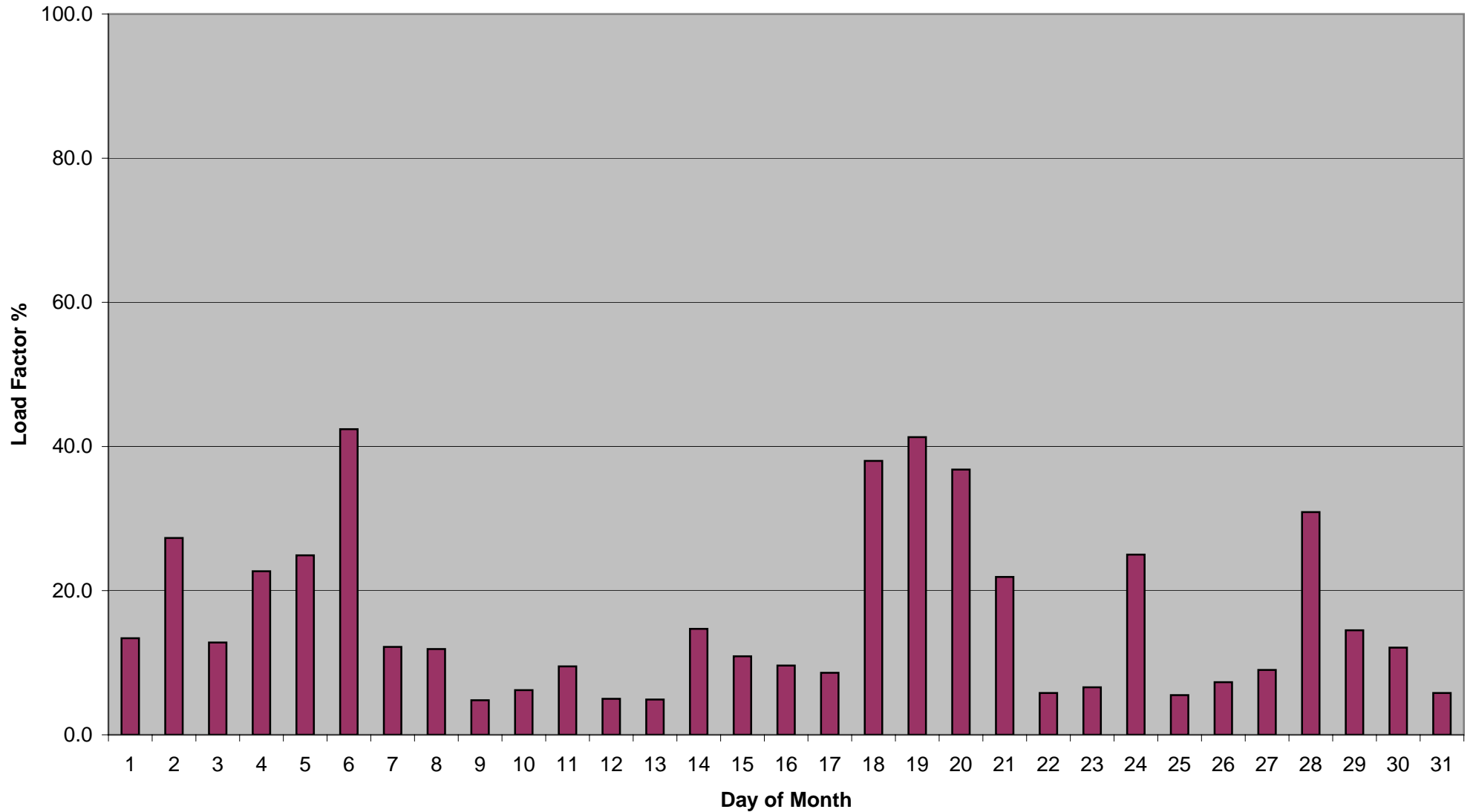
Average Number of Turbines not working = 22.4%



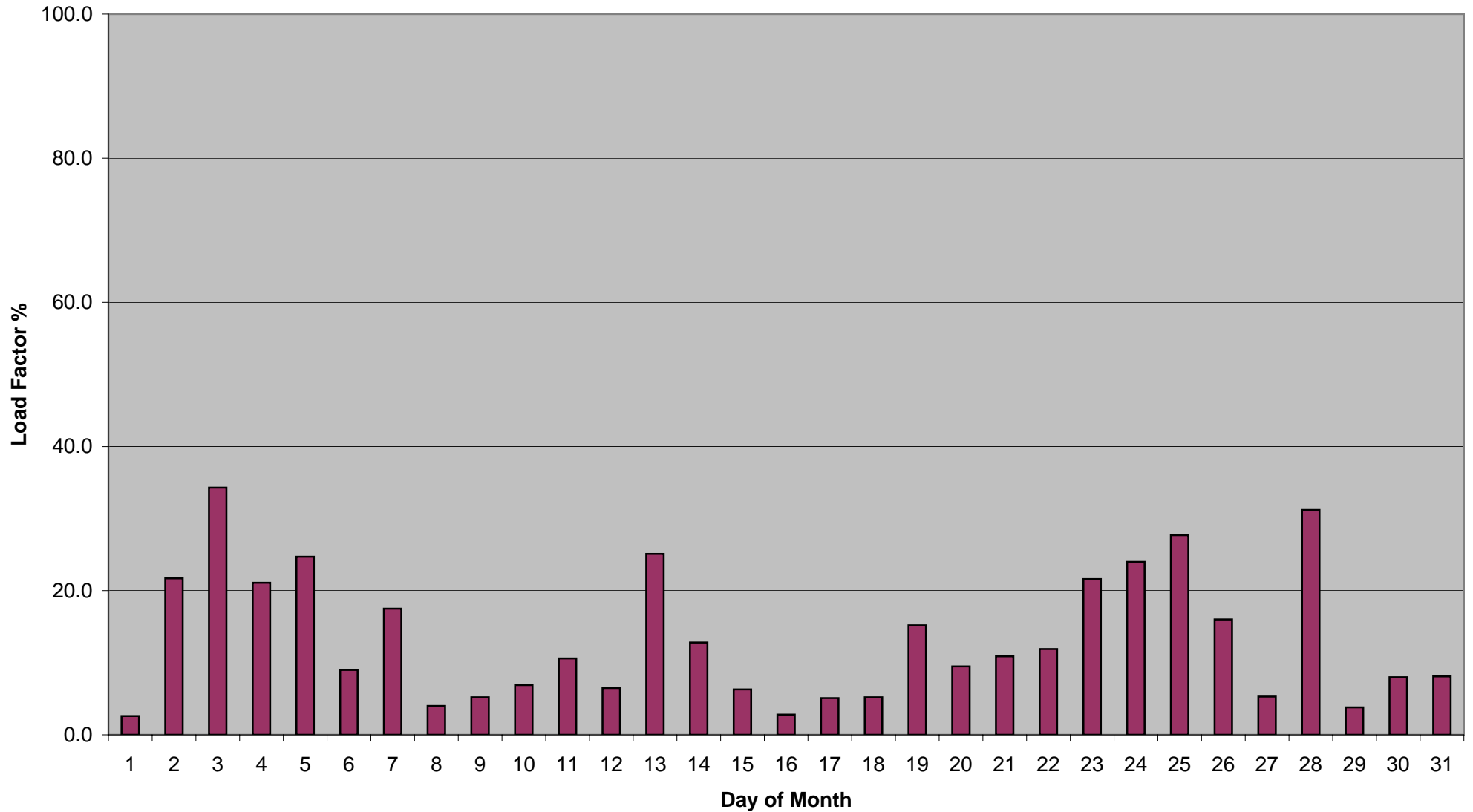
UK Average from 64 Met Office Weather Stations at 19:00hours - July 2005

Average Monthly Load Factor = 16.2%

Average Number of Turbines not working = 22.9%



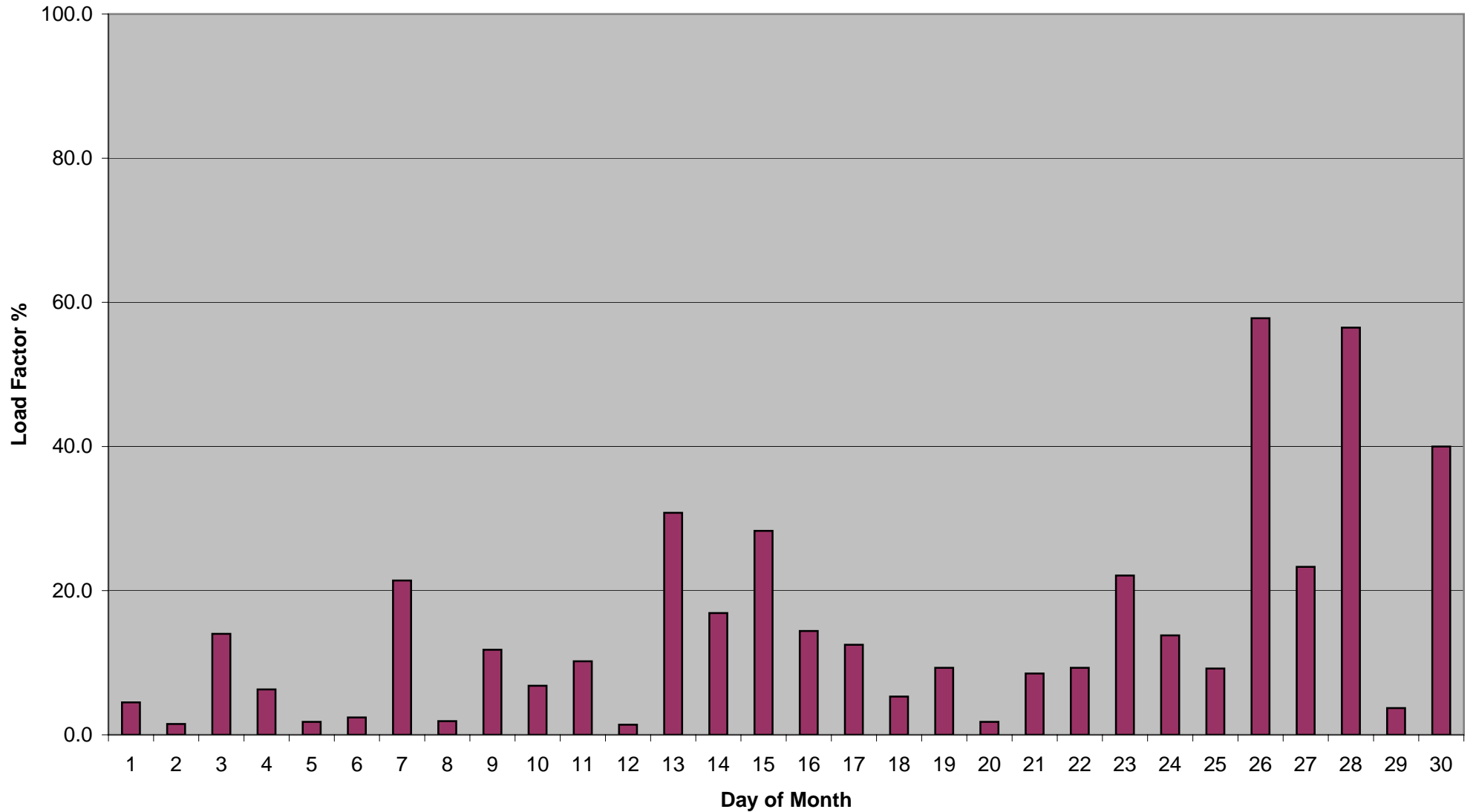
UK Average from 64 Met Office Weather Stations at 19:00hours - August 2005
Average Monthly Load Factor = 13.4%
Average Number of Turbines not working = 30.5%



UK Average from 64 Met Office Weather Stations at 19:00hours - September 2005

Average Monthly Load Factor = 14.9%

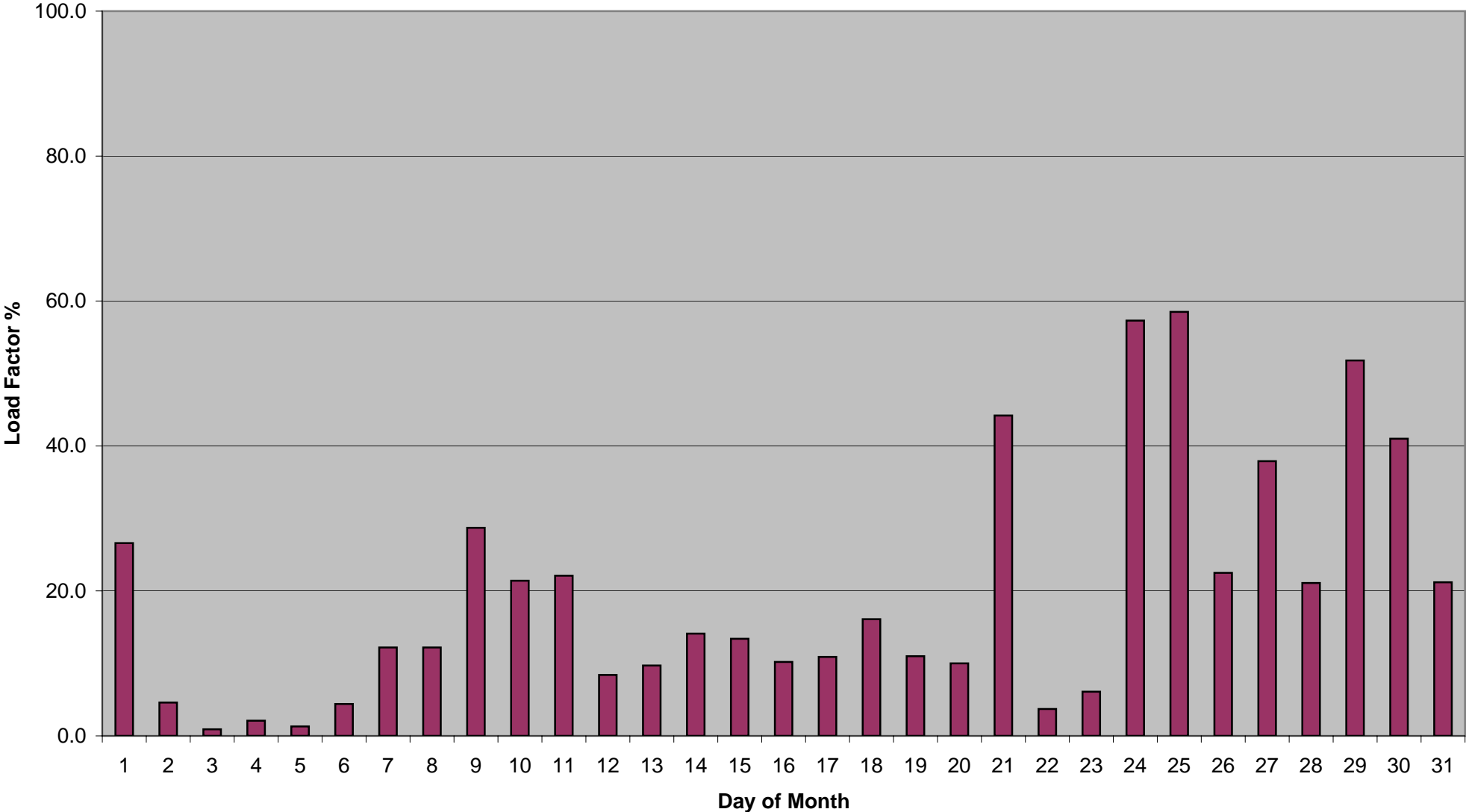
Average Number of Turbines not working = 37.0%



UK Average from 64 Met Office Weather Stations at 19:00hours - October 2005

Average Monthly Load Factor = 19.5%

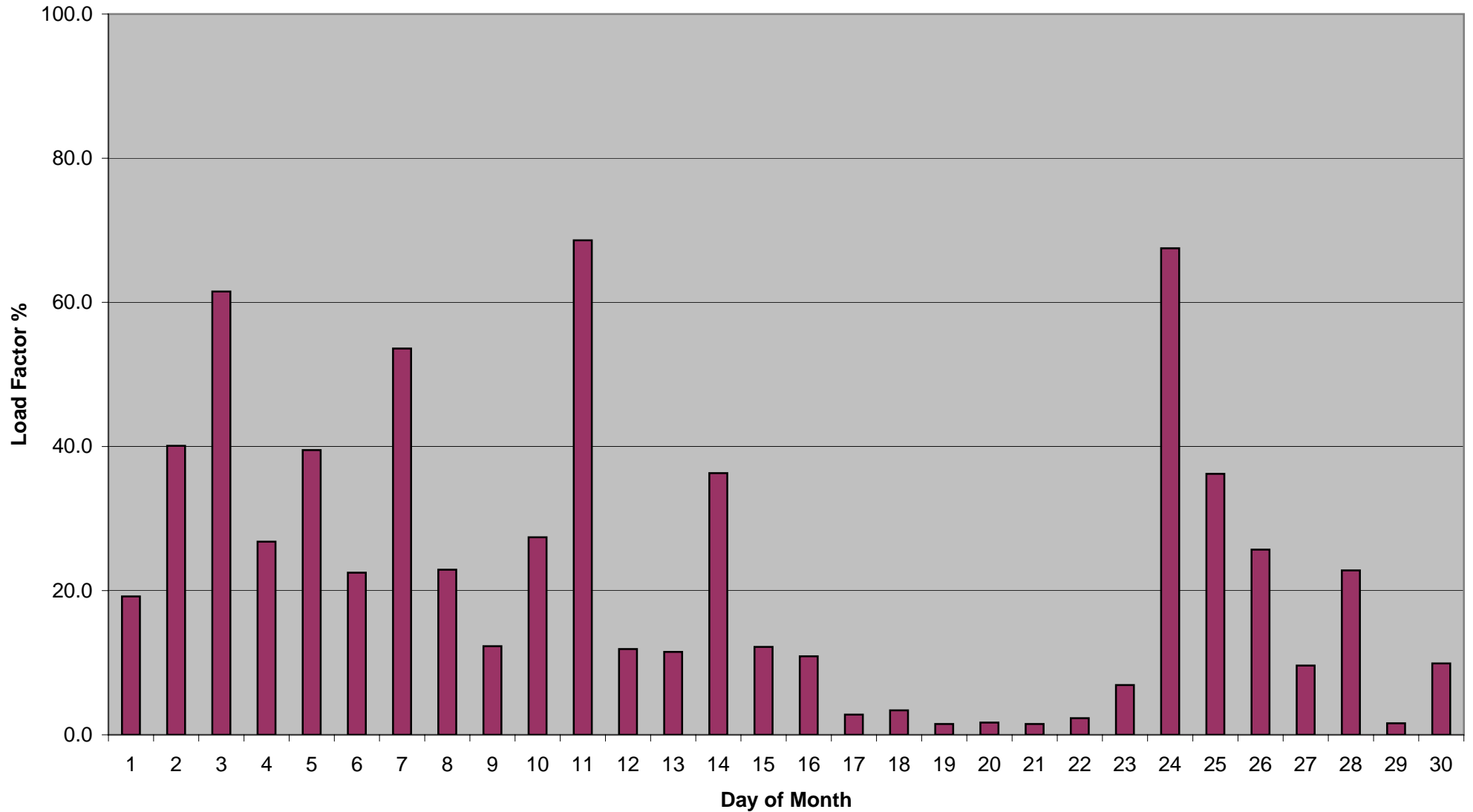
Average Number of Turbines not working = 32.3%



UK Average from 64 Met Office Weather Stations at 19:00hours - November 2005

Average Monthly Load Factor = 22.4%

Average Number of Turbines not working = 35.0%



UK Average from 64 Met Office Weather Stations at 19:00hours - December 2005

Average Monthly Load Factor = 17.3%

Average Number of Turbines not working = 36.6%

