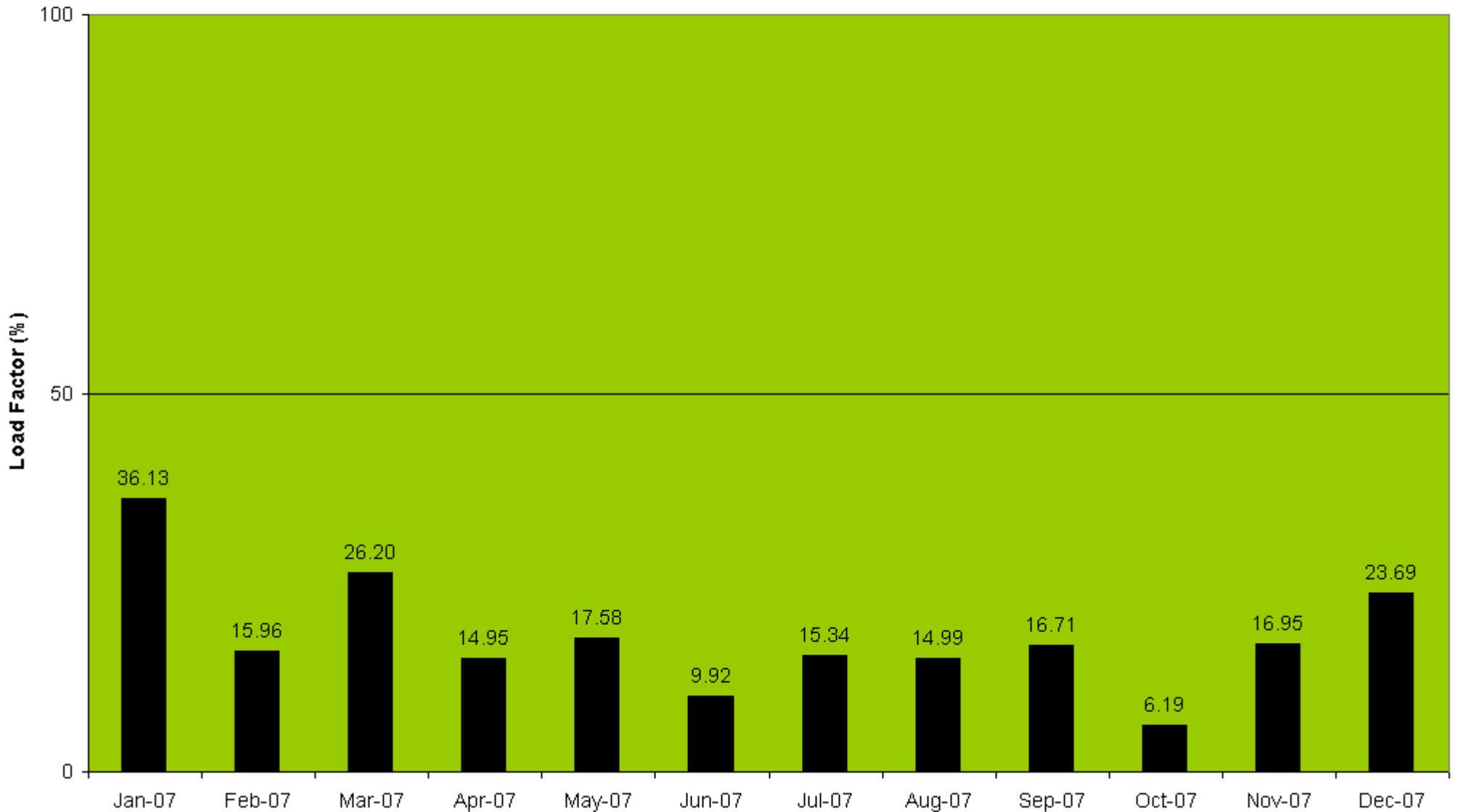


Bedford Load Factors : Monthly Summary - 2007

Average Monthly Load Factor = 17.9%

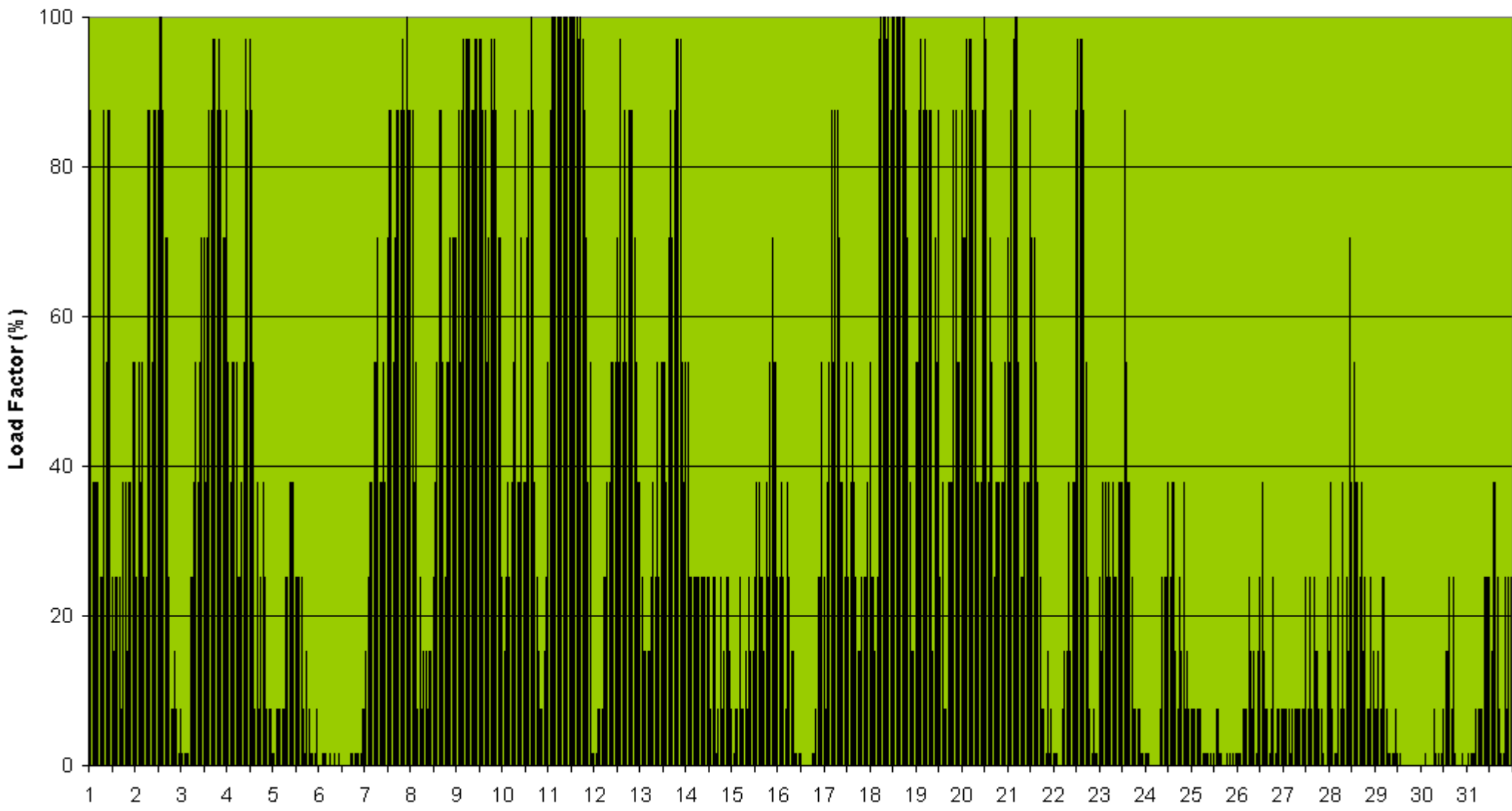
Average amount of time in percent when no electricity is produced = 27.0%



Bedford Load Factor - January 2007

Average Monthly Load Factor = 36.1%

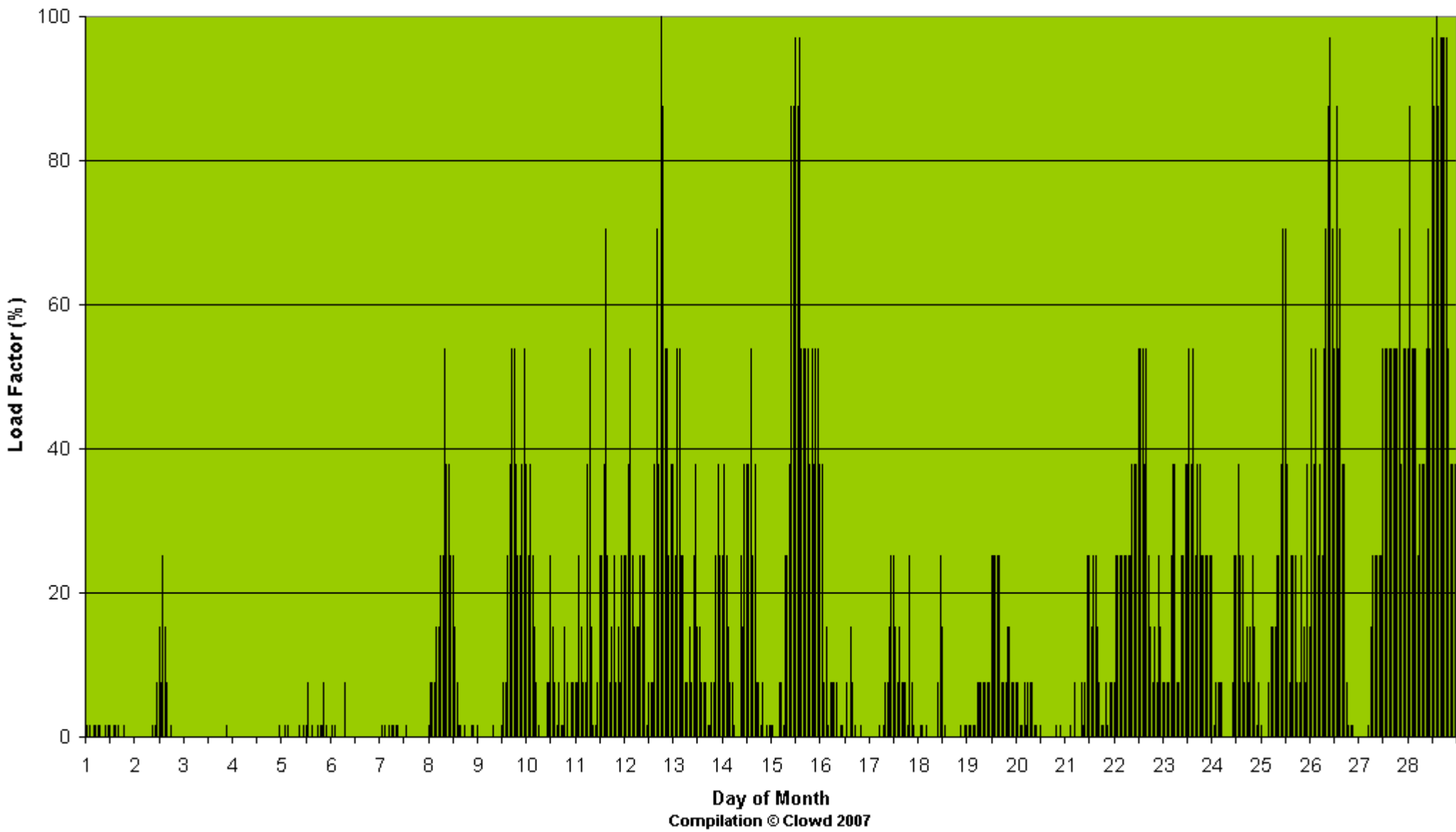
The amount of time in percent when no electricity was produced = 6.7%



Bedford Load Factor - February 2007

Average Monthly Load Factor = 16.0%

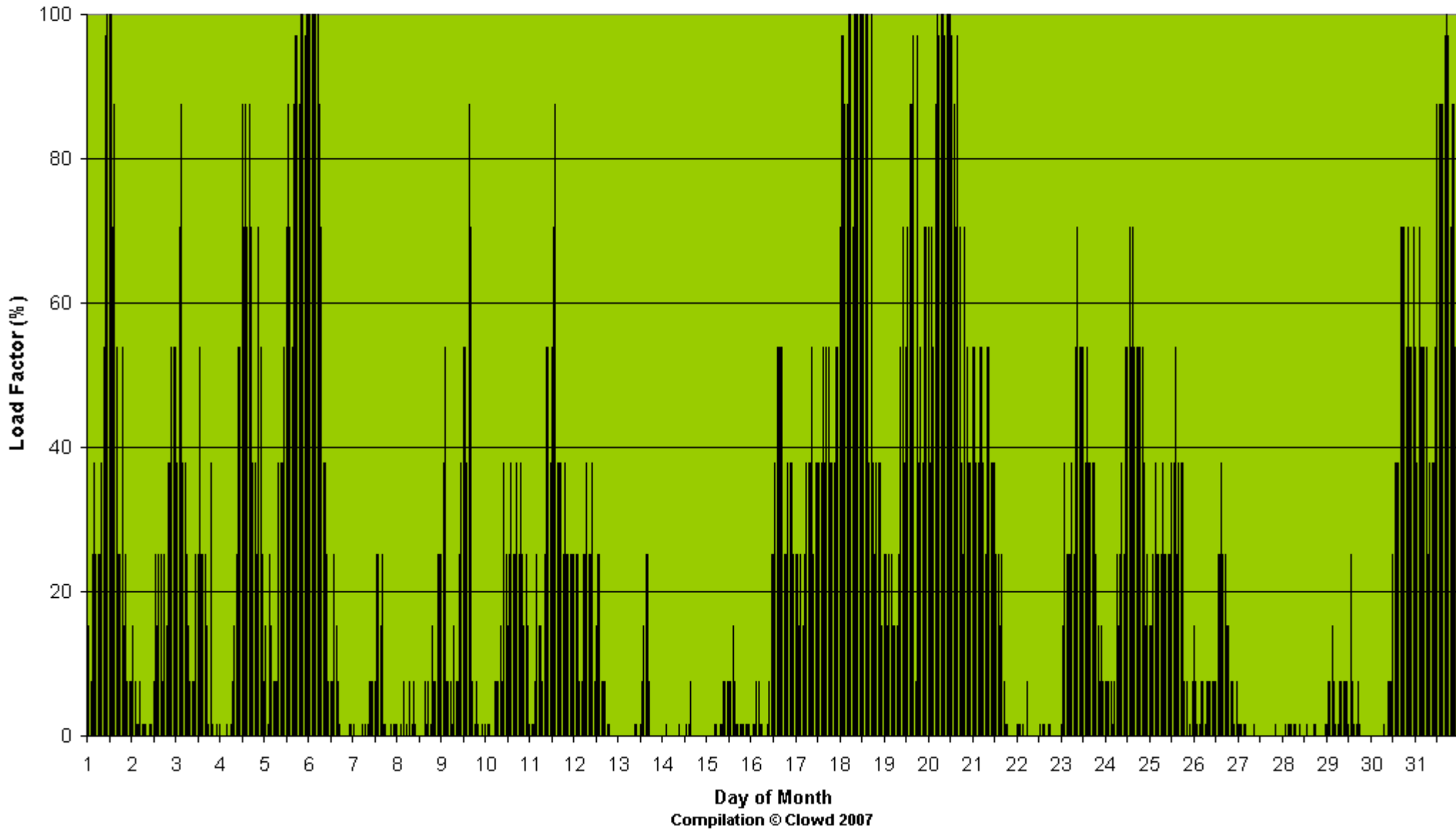
The amount of time in percent when no electricity was produced = 30.2%



Bedford Load Factor - March 2007

Average Monthly Load Factor = 26.2%

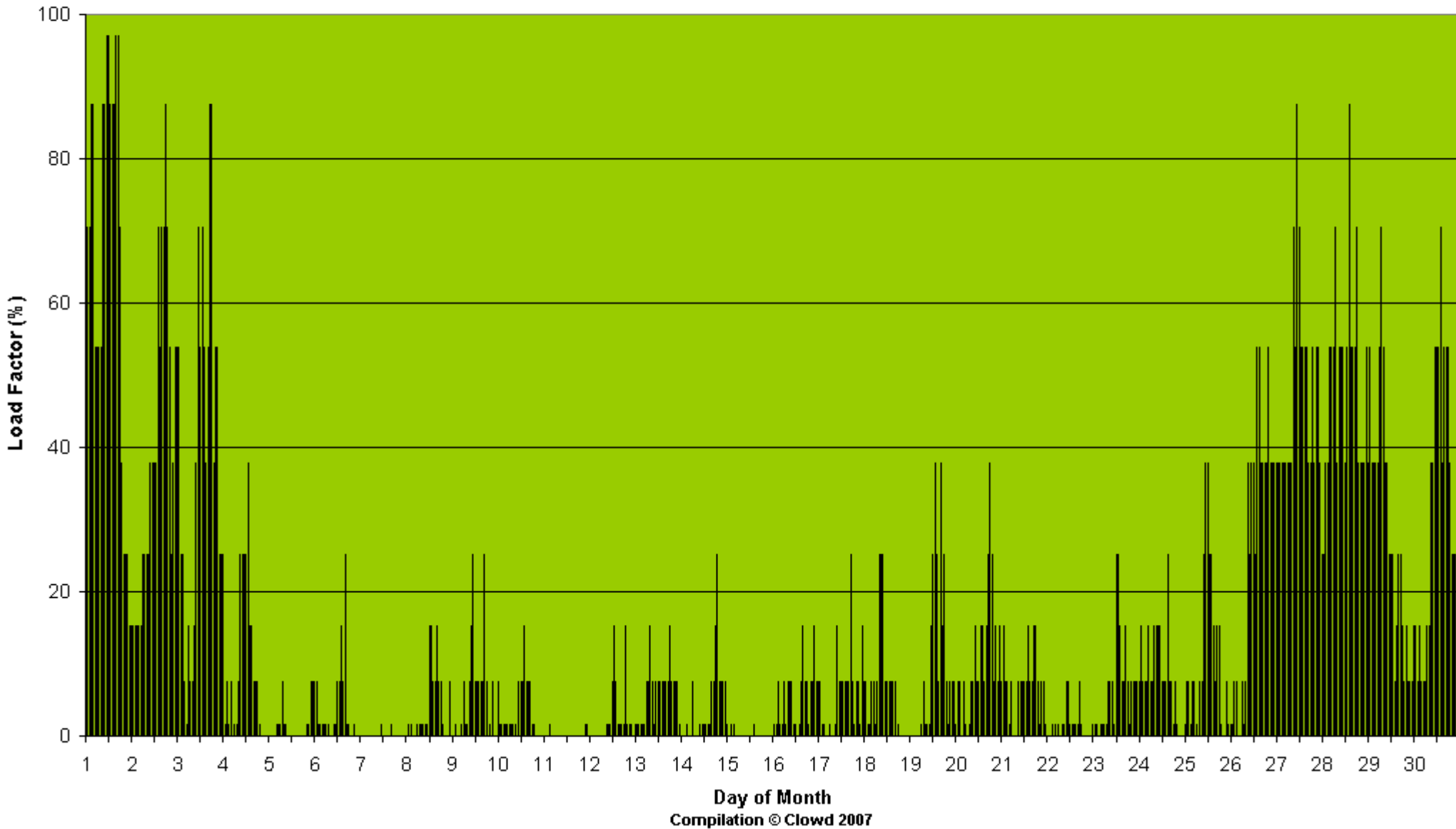
The amount of time in percent when no electricity was produced = 18.5%



Bedford Load Factor - April 2007

Average Monthly Load Factor = 14.9%

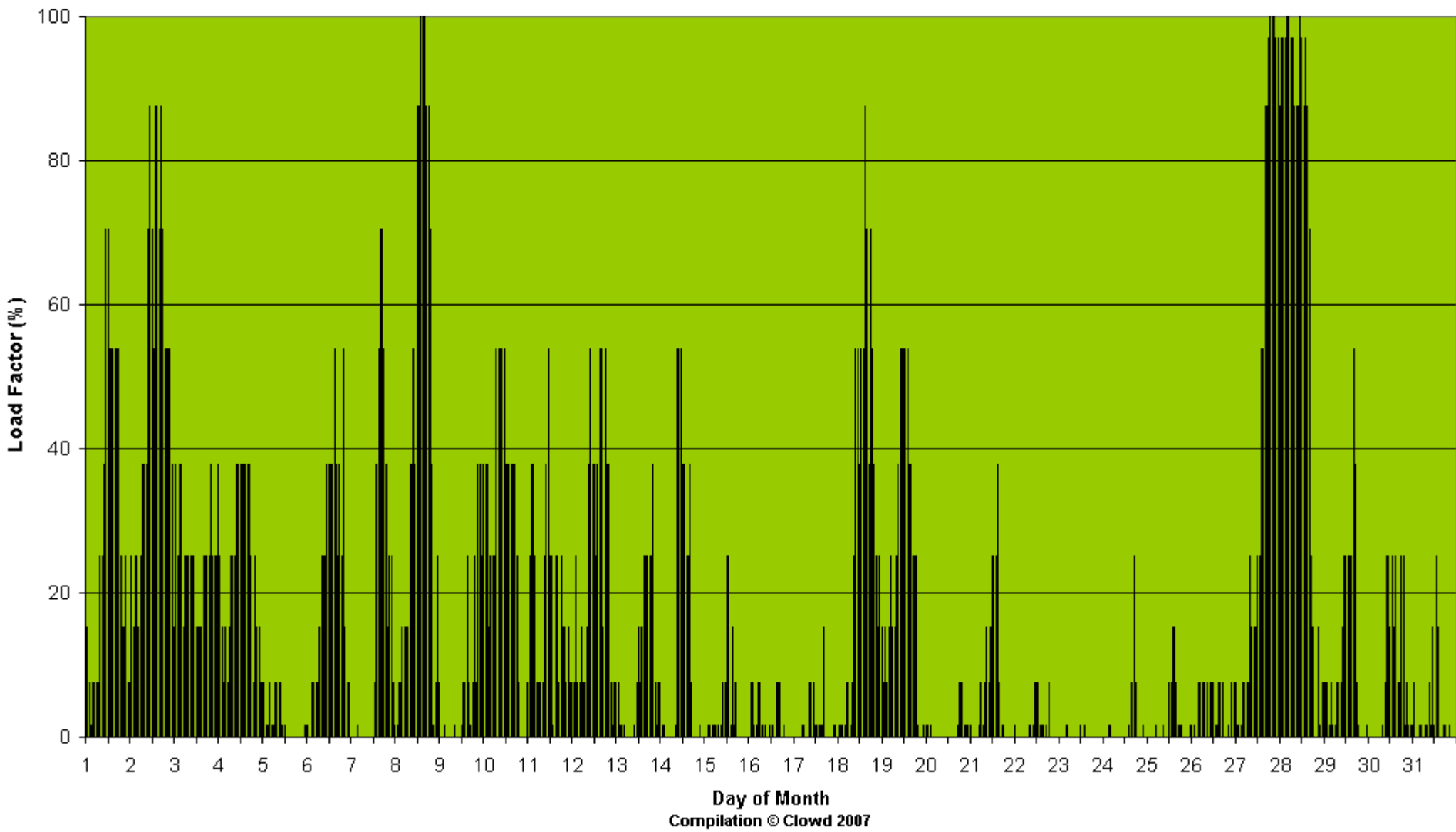
The amount of time in percent when no electricity was produced = 23.2%



Bedford Load Factor - May 2007

Average Monthly Load Factor = 17.6%

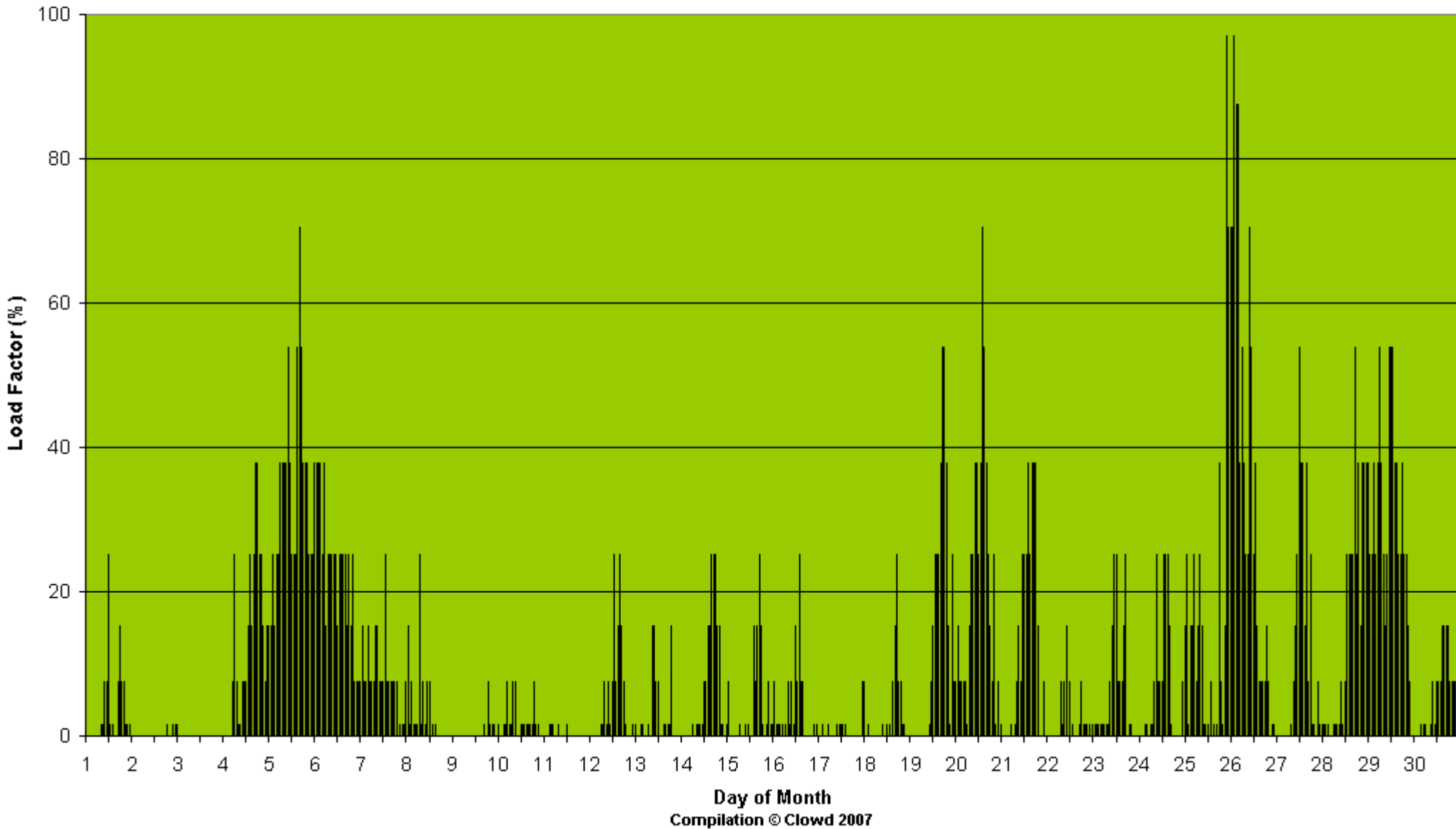
The amount of time in percent when no electricity was produced = 26.5%



Bedford Load Factor - June 2007

Average Monthly Load Factor = 9.9%

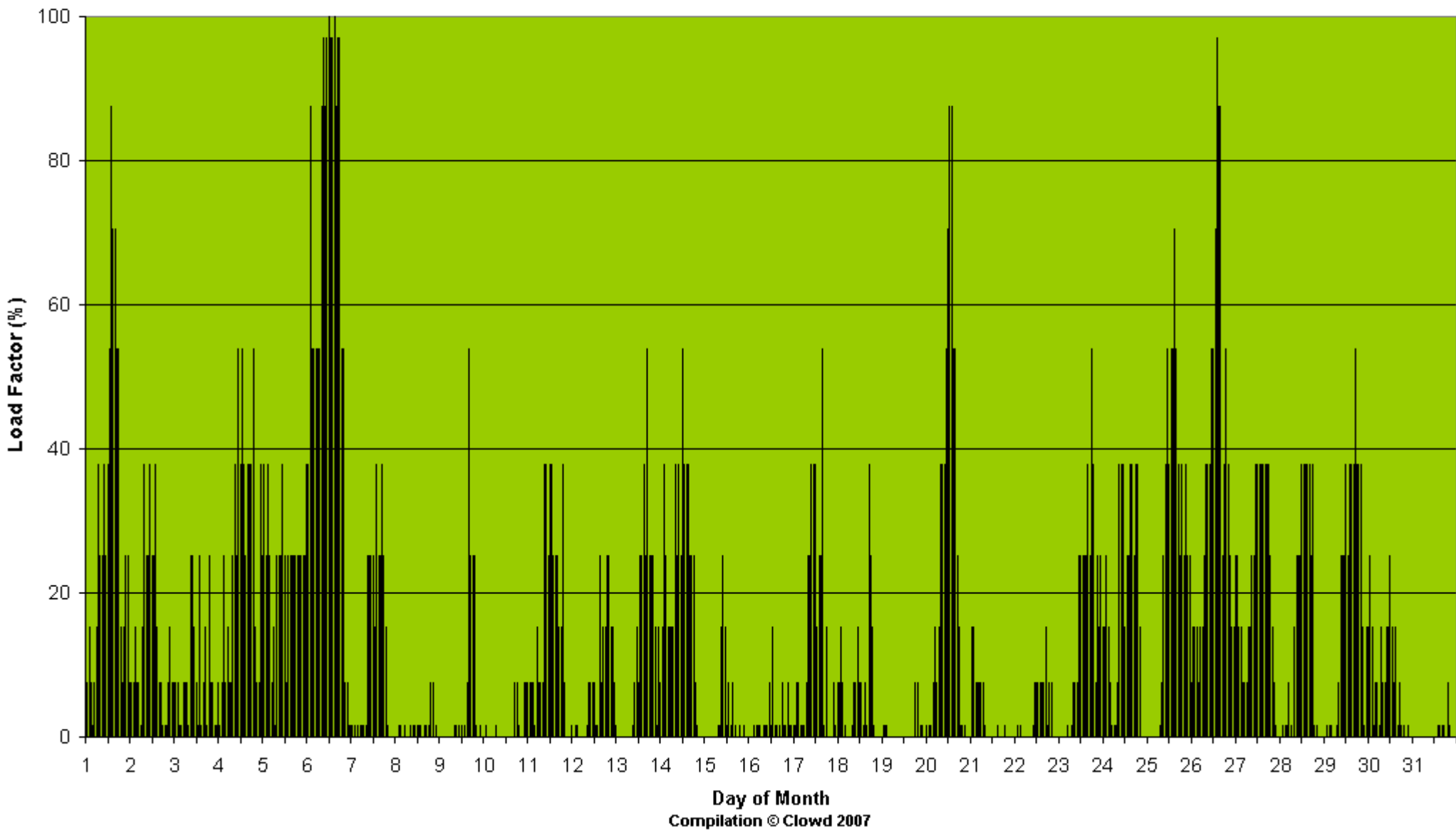
The amount of time in percent when no electricity was produced = 34.7%



Bedford Load Factor - July 2007

Average Monthly Load Factor = 15.3%

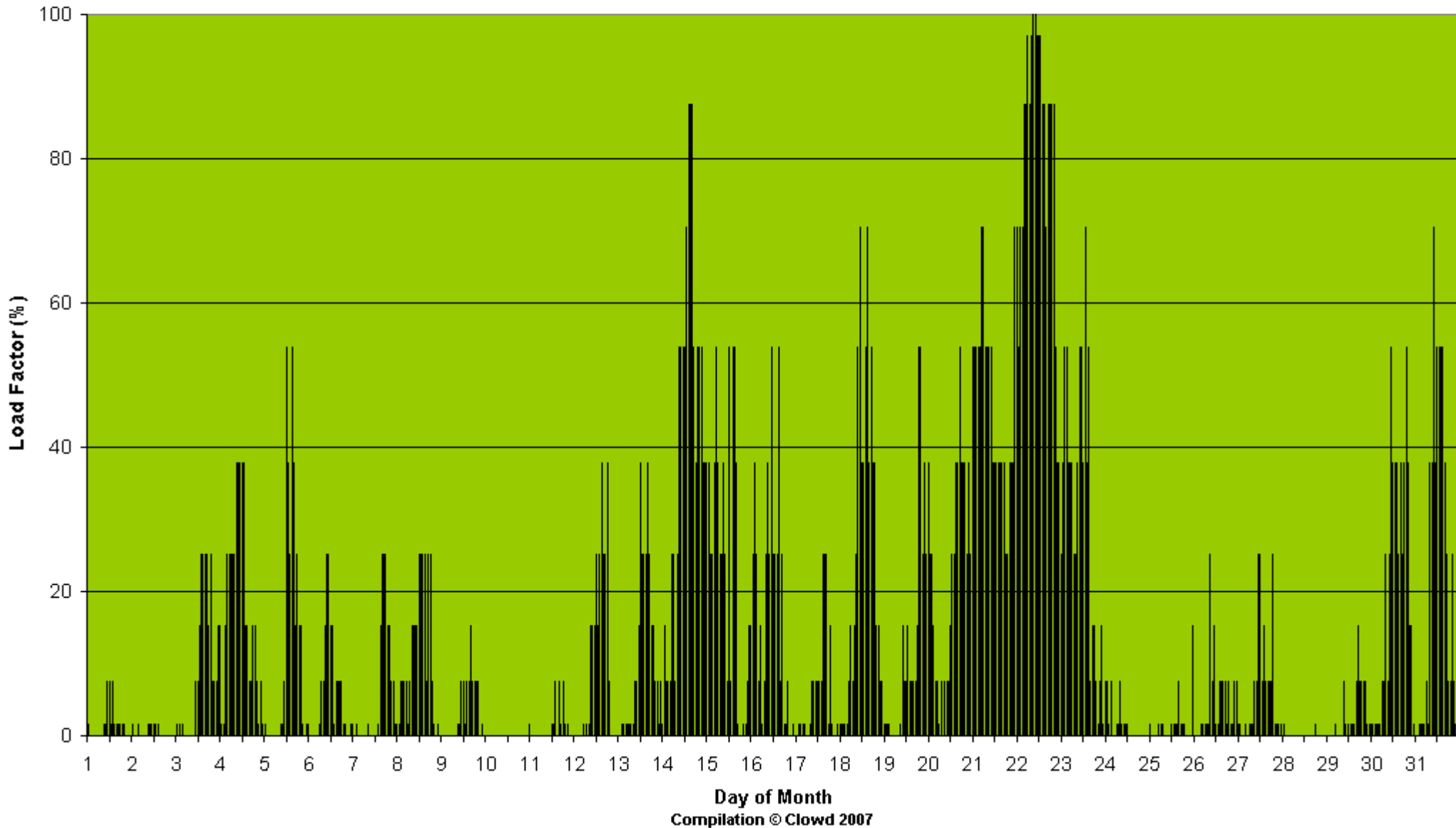
The amount of time in percent when no electricity was produced = 24.2%



Bedford Load Factor - August 2007

Average Monthly Load Factor = 15.0%

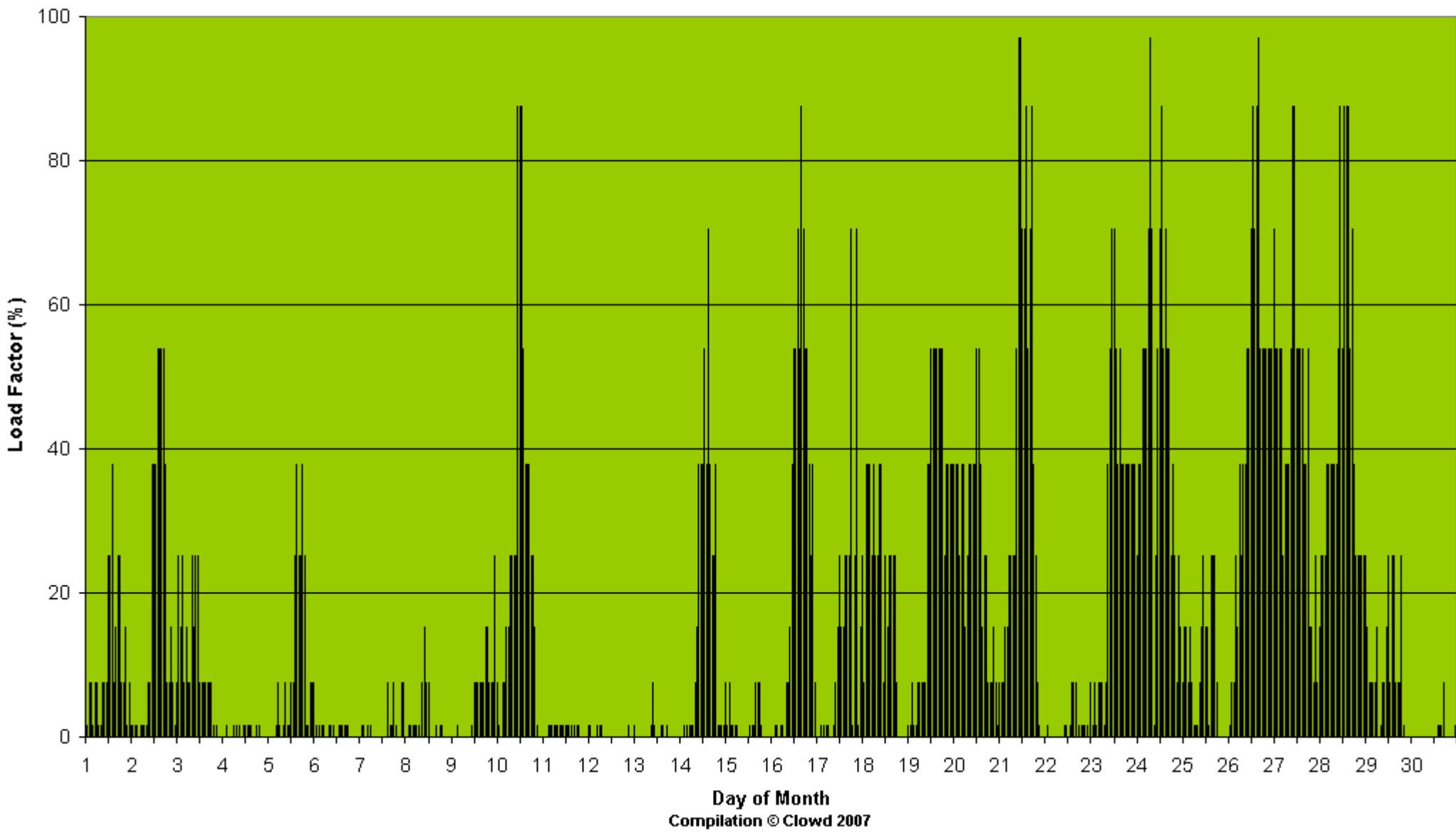
The amount of time in percent when no electricity was produced = 27.7%



Bedford Load Factor - September 2007

Average Monthly Load Factor = 16.7%

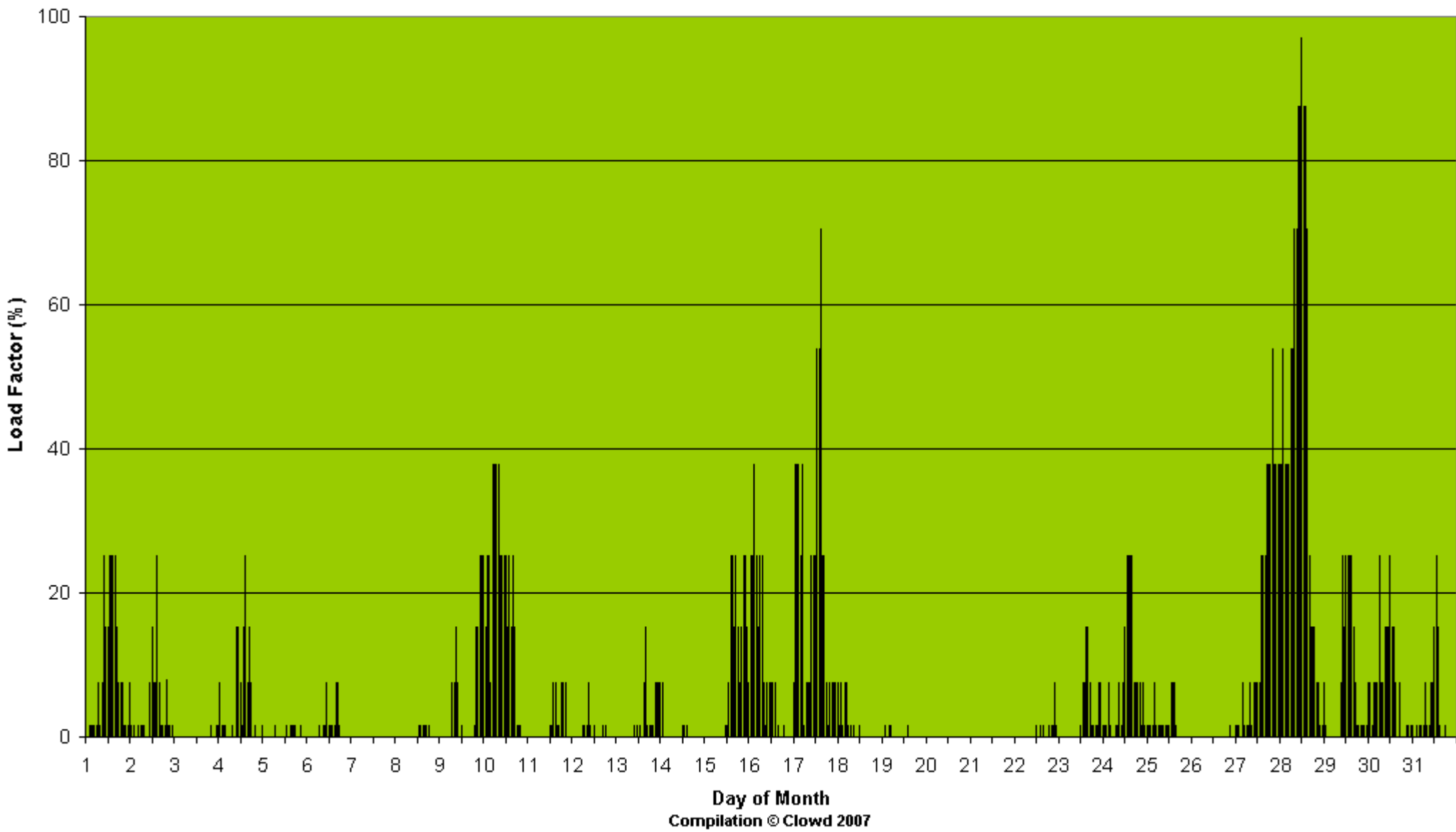
The amount of time in percent when no electricity was produced = 25.3%



Bedford Load Factor - October 2007

Average Monthly Load Factor = 6.2%

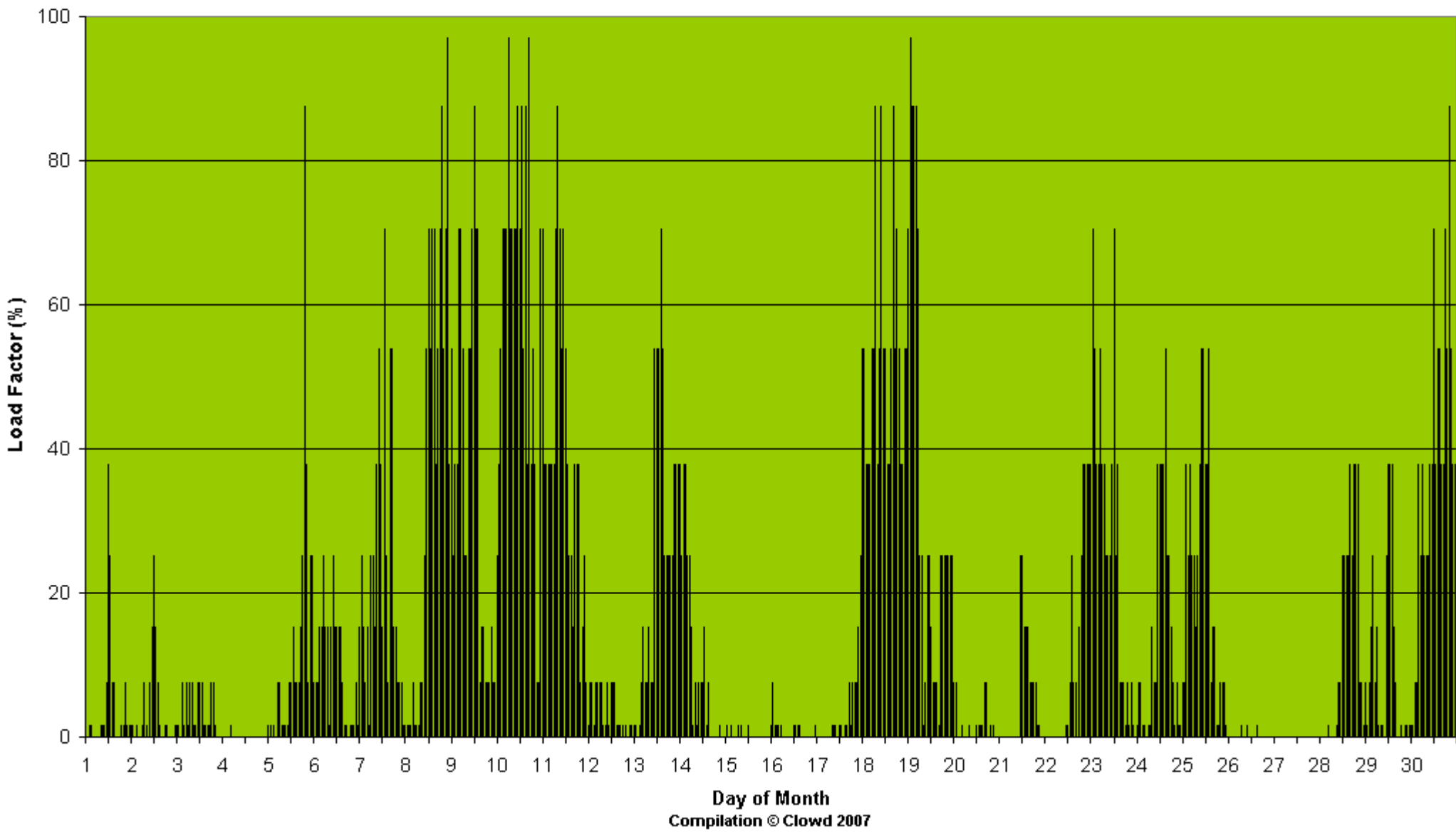
The amount of time in percent when no electricity was produced = 49.2%



Bedford Load Factor - November 2007

Average Monthly Load Factor = 17.0%

The amount of time in percent when no electricity was produced = 27.1%



Bedford Load Factor - December 2007

Average Monthly Load Factor = 23.7%

The amount of time in percent when no electricity was produced = 30.8%

