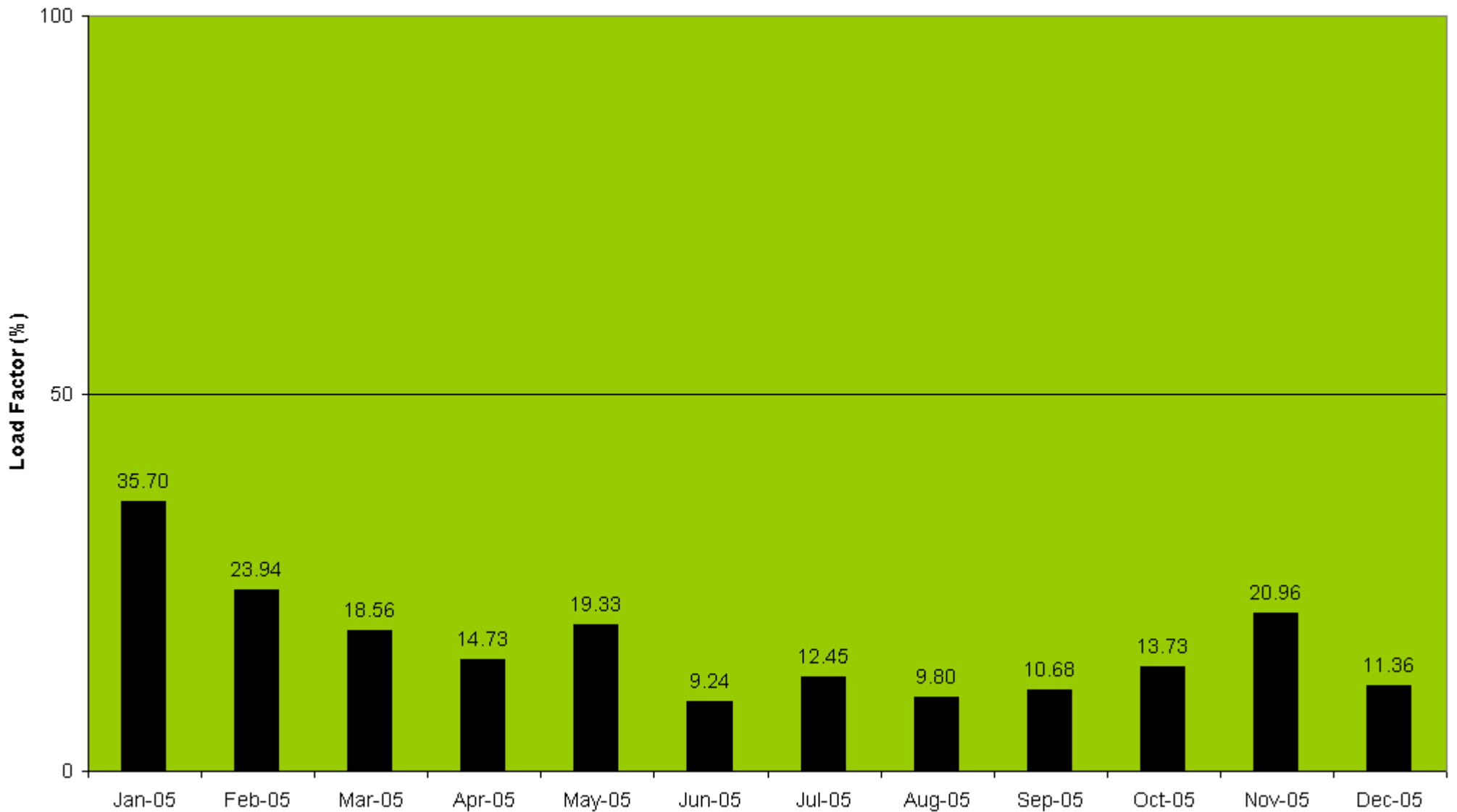


Bedford Load Factors : Monthly Summary - 2005

Average Monthly Load Factor = 16.7%

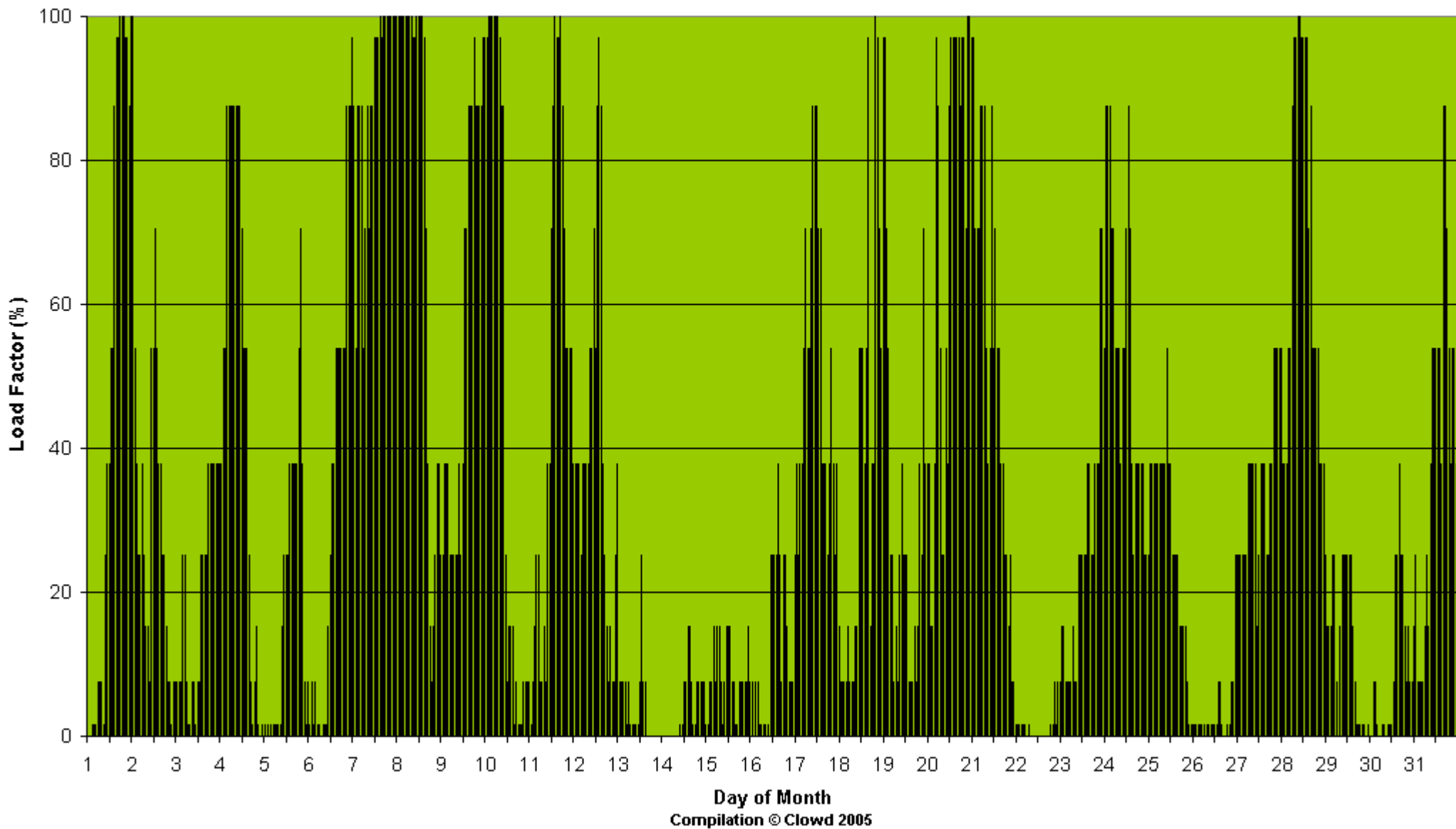
Average amount of time in percent when no electricity is produced = 21.5%



Bedford Load Factor - January 2005

Average Monthly Load Factor = 35.7%

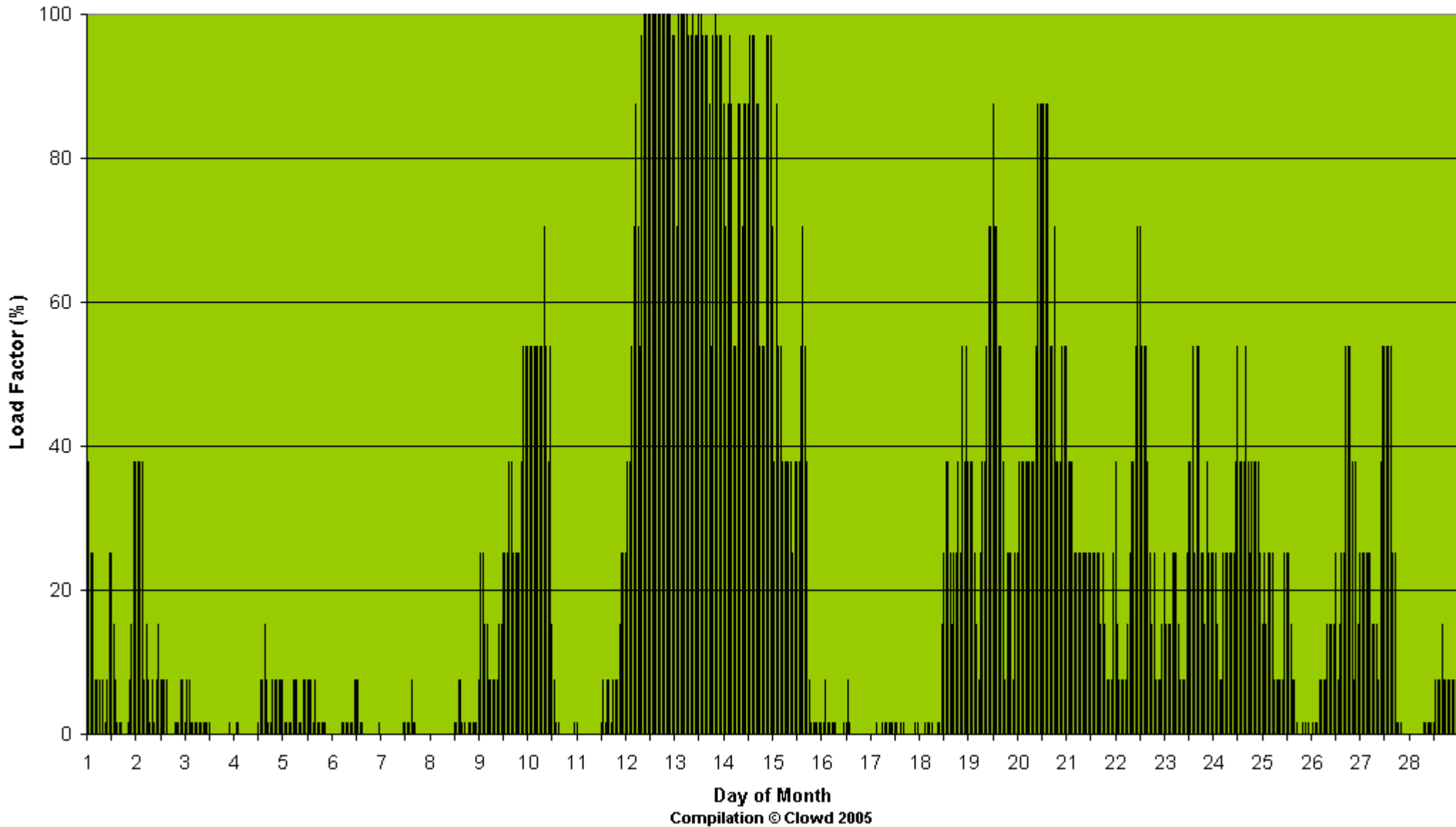
The amount of time in percent when no electricity was produced = 6.6%



Bedford Load Factor - February 2005

Average Monthly Load Factor = 23.9%

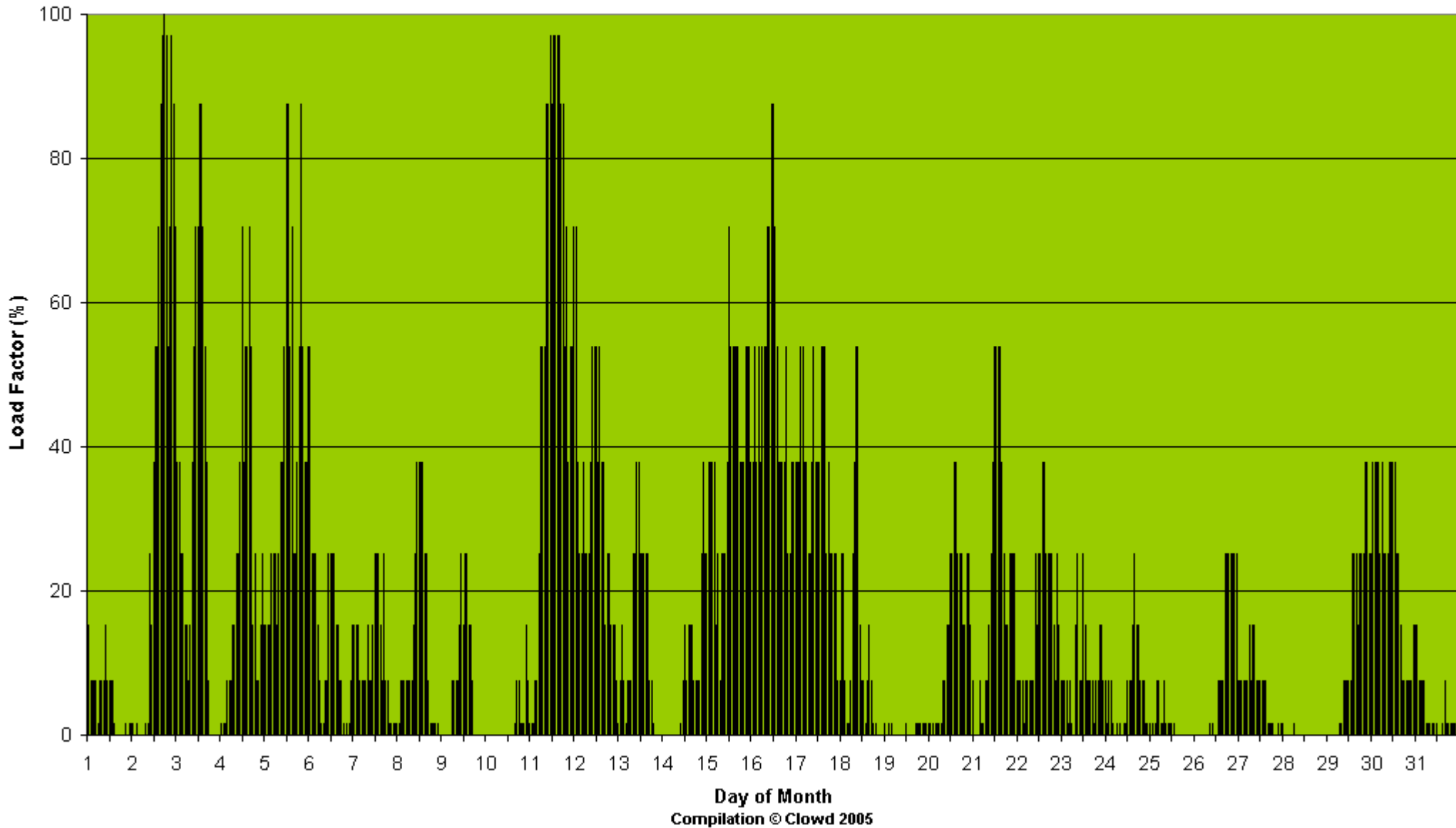
The amount of time in percent when no electricity was produced = 19.5%



Bedford Load Factor - March 2005

Average Monthly Load Factor = 18.6%

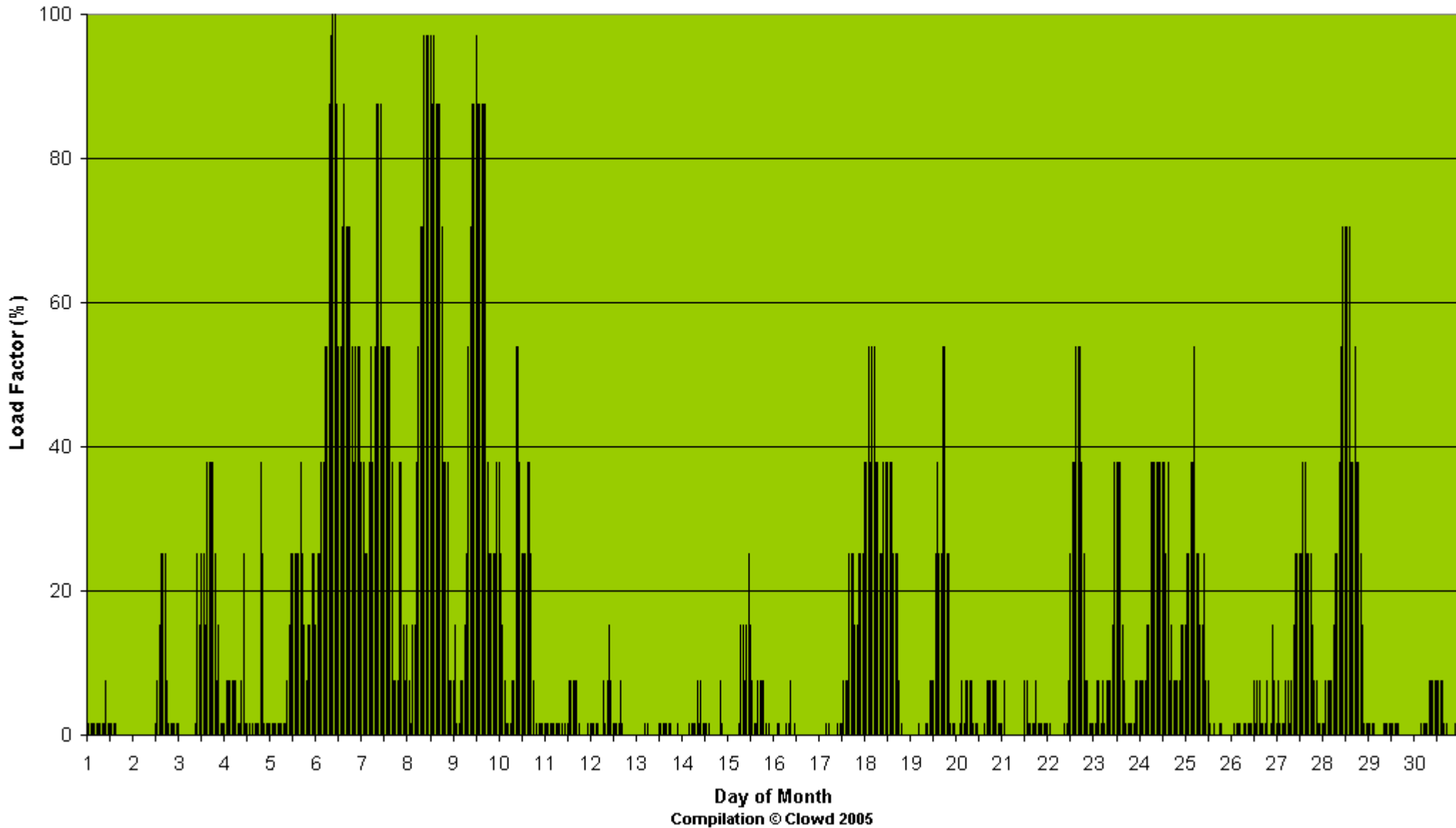
The amount of time in percent when no electricity was produced = 19.1%



Bedford Load Factor - April 2005

Average Monthly Load Factor = 14.7%

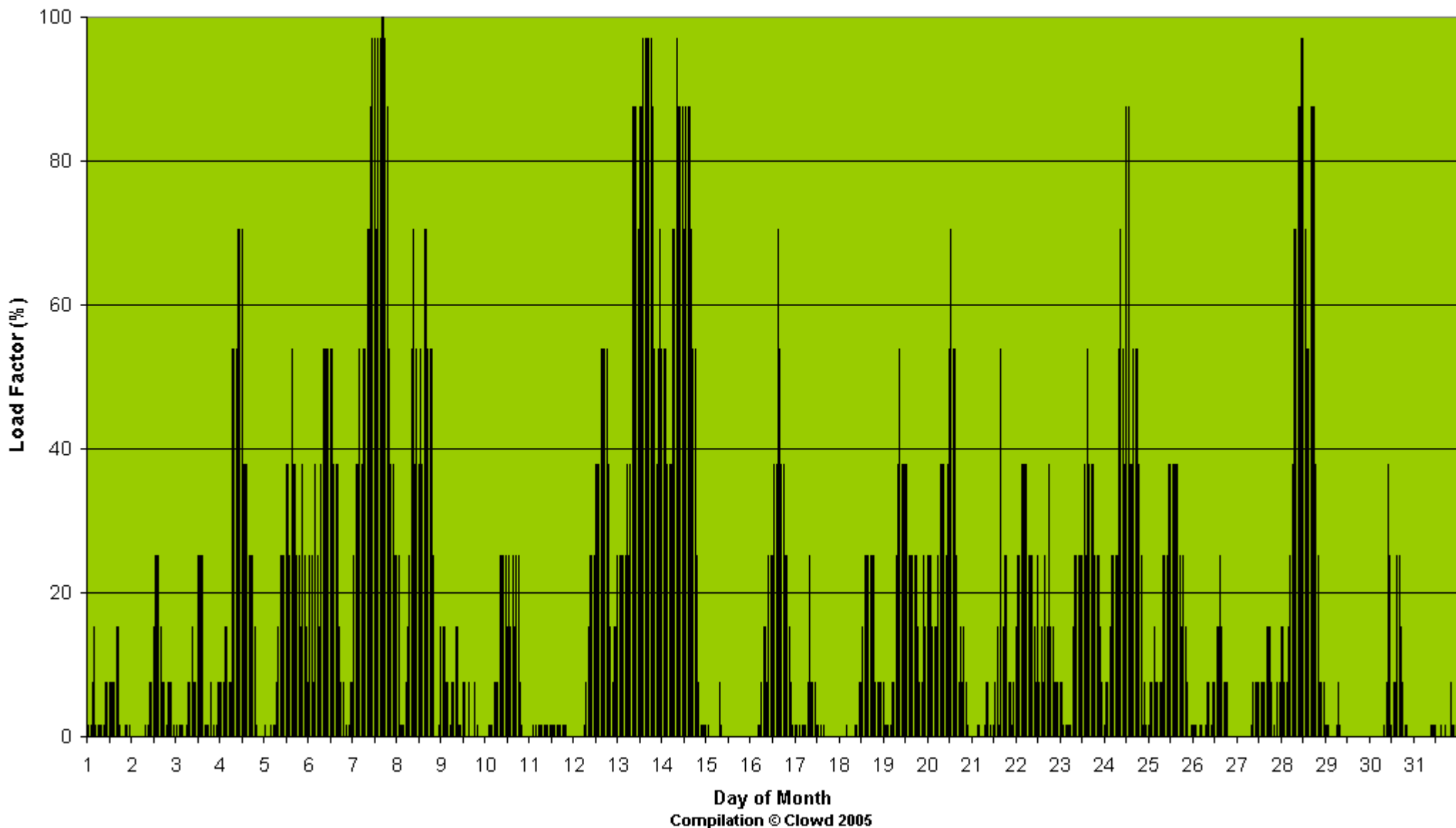
The amount of time in percent when no electricity was produced = 22.9%



Bedford Load Factor - May 2005

Average Monthly Load Factor = 19.3%

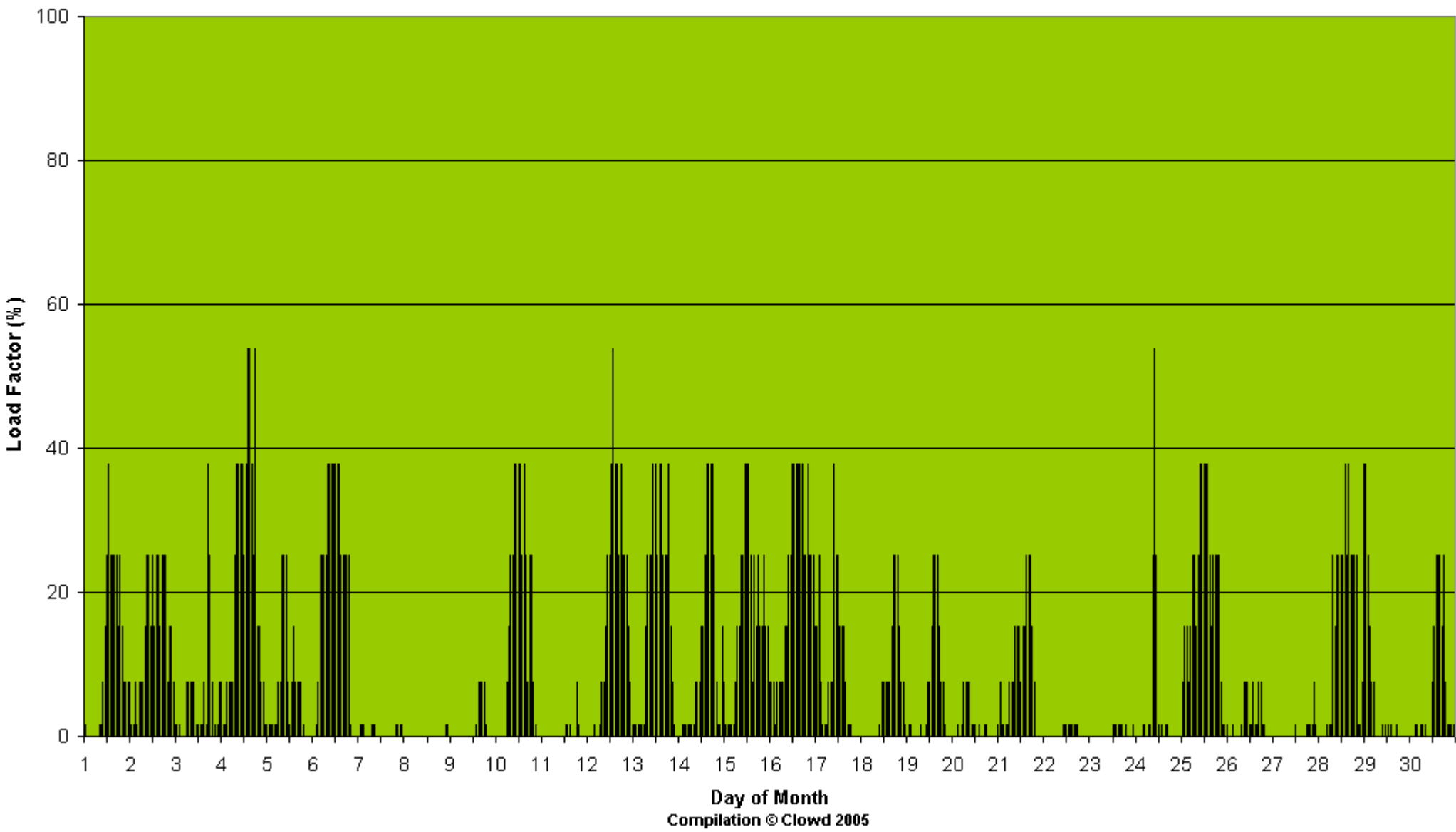
The amount of time in percent when no electricity was produced = 20.6%



Bedford Load Factor - June 2005

Average Monthly Load Factor = 9.2%

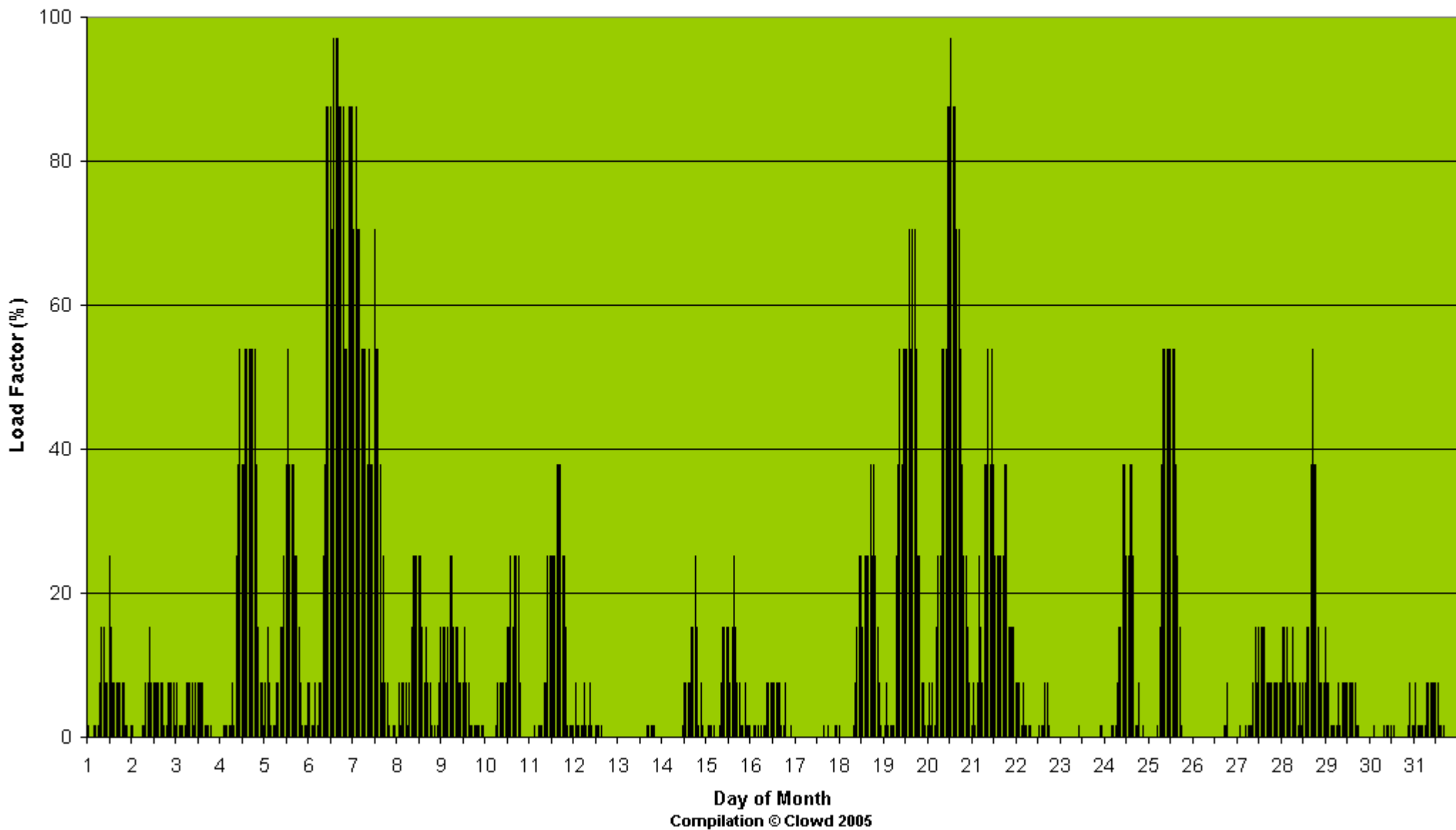
The amount of time in percent when no electricity was produced = 34.0%



Bedford Load Factor - July 2005

Average Monthly Load Factor = 12.5%

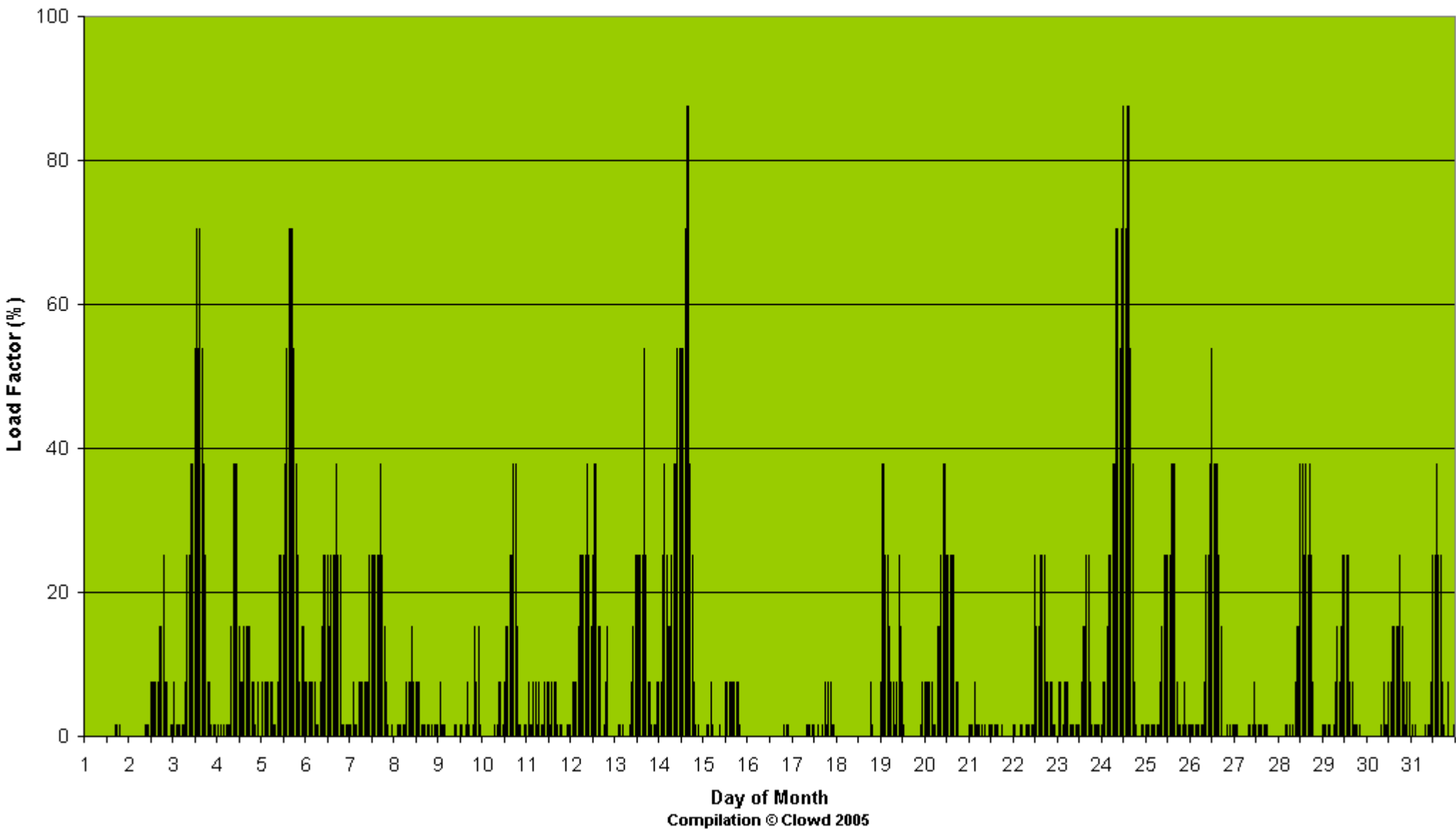
The amount of time in percent when no electricity was produced = 27.6%



Bedford Load Factor - August 2005

Average Monthly Load Factor = 9.8%

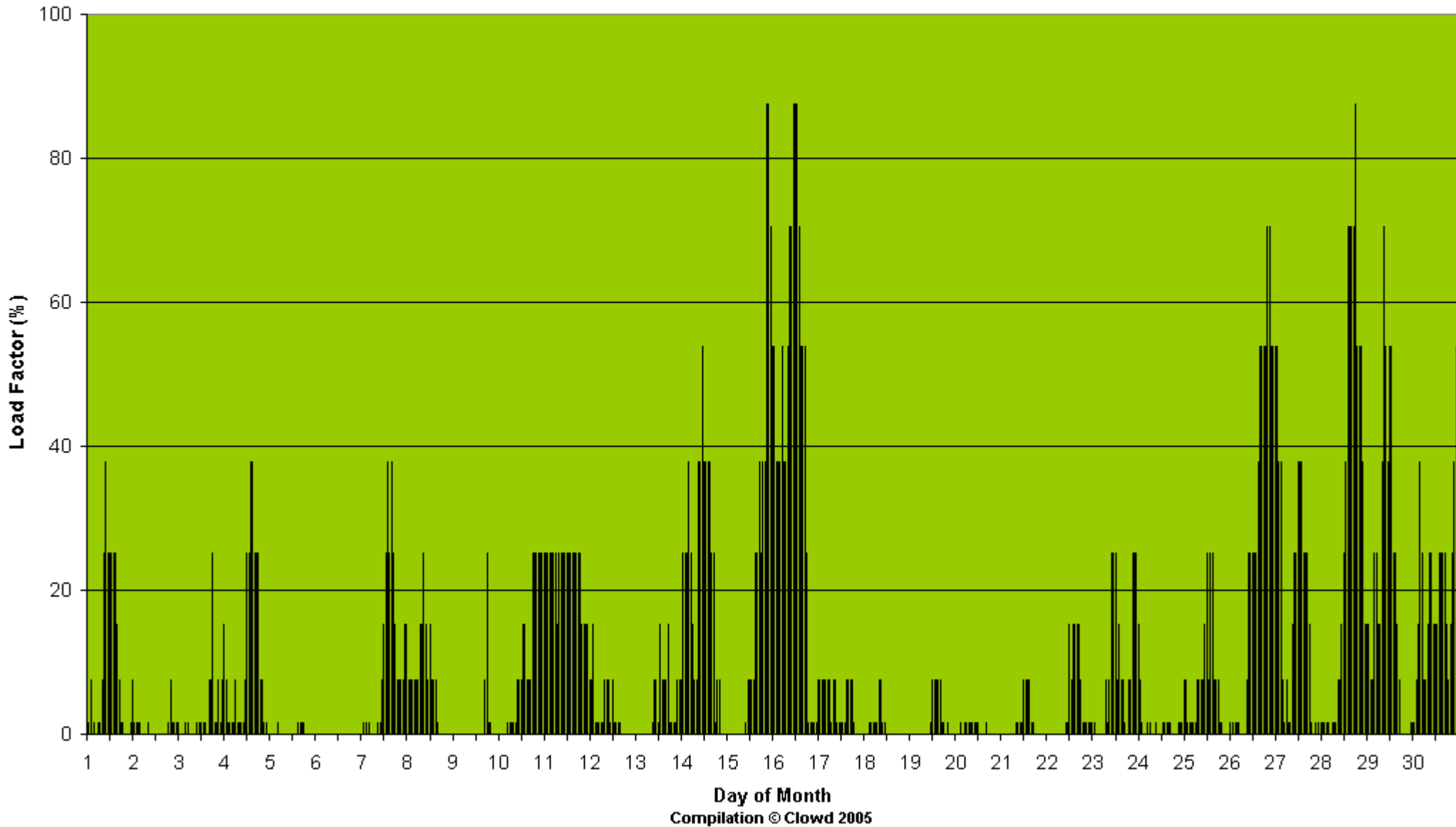
The amount of time in percent when no electricity was produced = 27.0%



Bedford Load Factor - September 2005

Average Monthly Load Factor = 10.7%

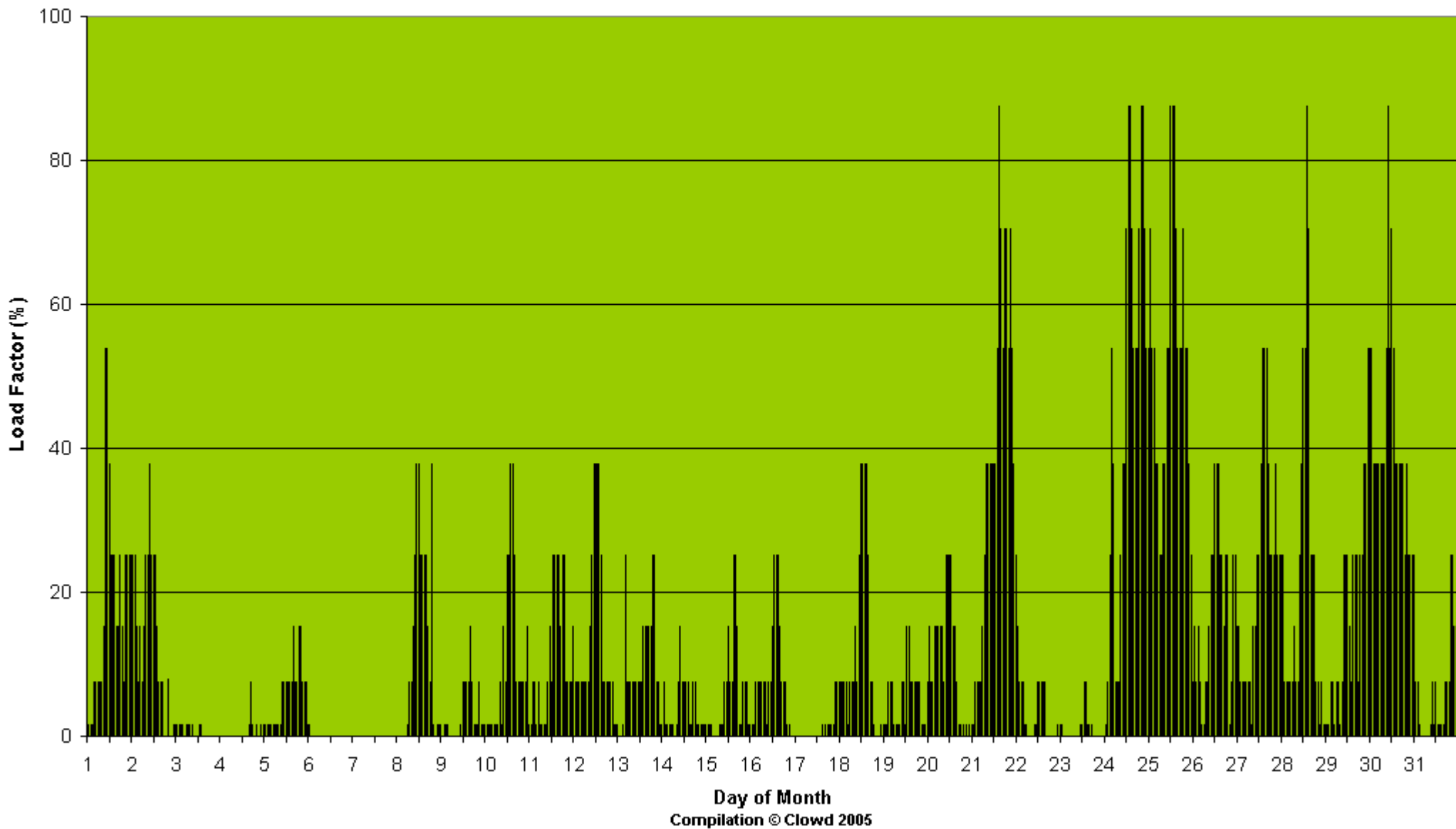
The amount of time in percent when no electricity was produced = 33.3%



Bedford Load Factor - October 2005

Average Monthly Load Factor = 13.7%

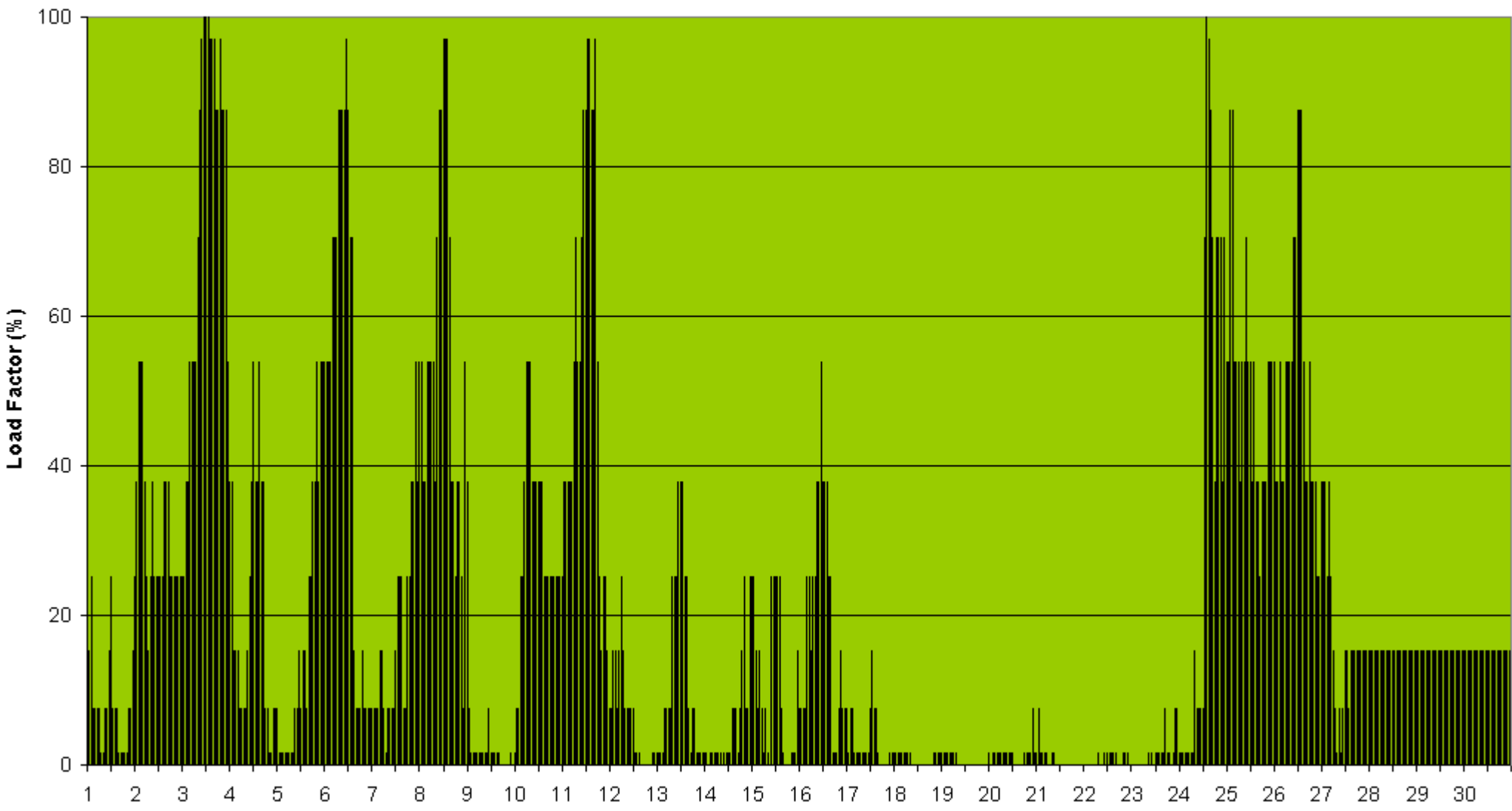
The amount of time in percent when no electricity was produced = 21.0%



Bedford Load Factor - November 2005

Average Monthly Load Factor = 21.0%

The amount of time in percent when no electricity was produced = 13.5%



Bedford Load Factor - December 2005

Average Monthly Load Factor = 11.4%

The amount of time in percent when no electricity was produced = 13.2%

